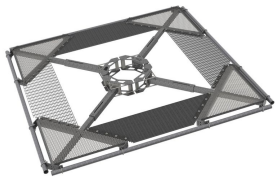


# MC-PK14L4-B



4-Sector Monopole Co-location Platform kit, 30 in to 60 in OD, 14 ft 6 in face,pipe ordered separately

## Product Classification

**Product Type** Monopole platform kit

## General Specifications

**Mounting** Monopole, 762–1524 mm (30–60 in) OD

**Pipe, quantity** 0

**Sectors, quantity** 4

## Dimensions

**Height** 254 mm | 10 in

**Face Width** 4.42 m | 14.5 ft

**Width** 4,419.6 mm | 174 in

**Length** 914.4 mm | 36 in

**Face Support Pipe Diameter** 88.9 mm | 3.5 in

**Mounting Diameter, maximum** 1524 mm | 60 in

**Mounting Diameter, minimum** 762 mm | 30 in

**Pipe Outer Diameter** 0 mm | 0 in

**Stand-off Distance** 914.4 mm | 36 in

**Mounting Circumference, maximum** 4,785.36 mm | 188.4 in

**Mounting Circumference, minimum** 2,392.68 mm | 94.2 in

## Material Specifications

**Material Type** Hot dip galvanized steel

## Mechanical Specifications

**Wind Rating** 120 mph (BWS) at 100 ft AGL | 140 mph (3-second gust) at 150 ft AGL using Exposure D

# MC-PK14L4-B

---

	per FBC
<b>Wind Rating Criteria</b>	Four 72 in x 12 in panel antennas per sector
<b>Wind Rating Test Method</b>	TIA/EIA-222

## Packaging and Weights

<b>Included</b>	Platform   Ring mount
<b>Packaging quantity</b>	1
<b>Weight, net</b>	1,168.091 kg   2,575.2 lb

## \* Footnotes

<b>Wind Rating</b>	BWS—Base Wind Speed; FBC—Florida Building Code
--------------------	--