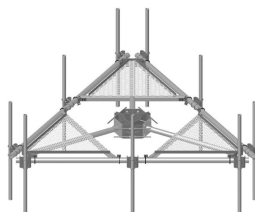


# MC-PK14S-B



Low-Profile Co-location Platform Kit, 14 ft face, 10 in to 30 in OD, pipe ordered separately

**OBSOLETE**

This product was discontinued on: August 18, 2022

**Replaced By:**

MC-PK14M-B      Low-Profile Co-location Platform Kit, 14 ft face, 12 in to 50 in OD, pipe ordered separately

## Product Classification

**Product Type**      Monopole platform kit

## General Specifications

**Mounting**      Monopole, 254–762 mm (10–30 in) OD

**Pipe, quantity**      0

**Sectors, quantity**      3

## Dimensions

**Height**      254 mm | 10 in

**Face Width**      4.42 m | 14.5 ft

**Width**      4,419.6 mm | 174 in

**Length**      914.4 mm | 36 in

**Face Support Pipe Diameter**      88.9 mm | 3.5 in

**Mounting Diameter, maximum**      762 mm | 30 in

**Mounting Diameter, minimum**      254 mm | 10 in

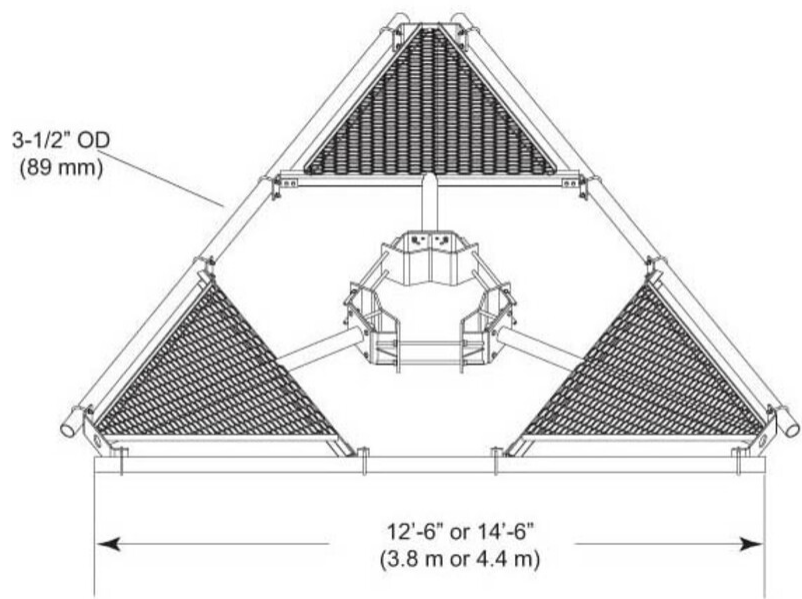
**Pipe Outer Diameter**      0 mm | 0 in

**Mounting Circumference, maximum**      2,392.68 mm | 94.2 in

**Mounting Circumference, minimum**      797.56 mm | 31.4 in

# MC-PK14S-B

## Outline Drawing



## Material Specifications

**Material Type** Hot dip galvanized steel

## Mechanical Specifications

**Wind Rating** 120 mph (BWS) at 150 ft AGL | 140 mph (3-second gust) at 150 ft AGL using Exposure D per FBC

**Wind Rating Criteria** Four 72 in x 8 in panel antennas per sector

**Wind Rating Test Method** TIA/EIA-222

## Packaging and Weights

**Included** Pipe mounts | Platform | Ring mount

**Packaging quantity** 1

**Weight, net** 554.88 kg | 1,223.3 lb

## Regulatory Compliance/Certifications

Agency	Classification
ISO 9001:2015	Designed, manufactured and/or distributed under this quality management system

# MC-PK14S-B

---

## Included Products

- |             |   |  |
|-------------|---|--|
| MC-RM1030-3 | – | Universal Ring Mount, 10 in to 30 in OD  |
| MT-196-14   | – | Low Profile Co-location Base Platform, 14 ft face. Ring Mount & Antenna Pipes Sold Separately. |

## \* Footnotes

**Wind Rating**                      BWS—Base Wind Speed; FBC—Florida Building Code