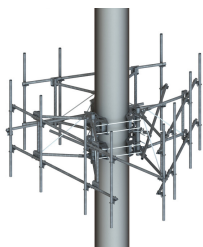


MCG22-10M-9-96



G22 High Capacity 3-Sector Monopole Frame, 10 ft 6 in face, includes nine 96 in pipes; For patents, see www.cs-pat.com.

OBSOLETE

This product was discontinued on: July 29, 2022

Replaced By:

MCG22HD-10M-9-96	G22HD High Capacity 3-Sector Monopole Frame with 2 7/8in OD x 10.5ft face. Includes nine 2 3/8in OD x 96in antenna pipes
------------------	--

Product Classification

Product Type	High capacity monopole sector frame
---------------------	-------------------------------------

General Specifications

Mounting Monopole, 381–1270 mm (15–50 in) OD

Pipe, quantity	9
-----------------------	---

Sectors, quantity 3

Dimensions

Height 2,438.4 mm | 96 in

Face Width 3.2 m | 10.5 ft

Width 3,200.4 mm | 126 in

Pipe Length 2,438.4 mm | 96 in

Face Support Pipe Diameter 60.325 mm | 2.375 in

Mounting Diameter, maximum	1270 mm 50 in.
-----------------------------------	------------------

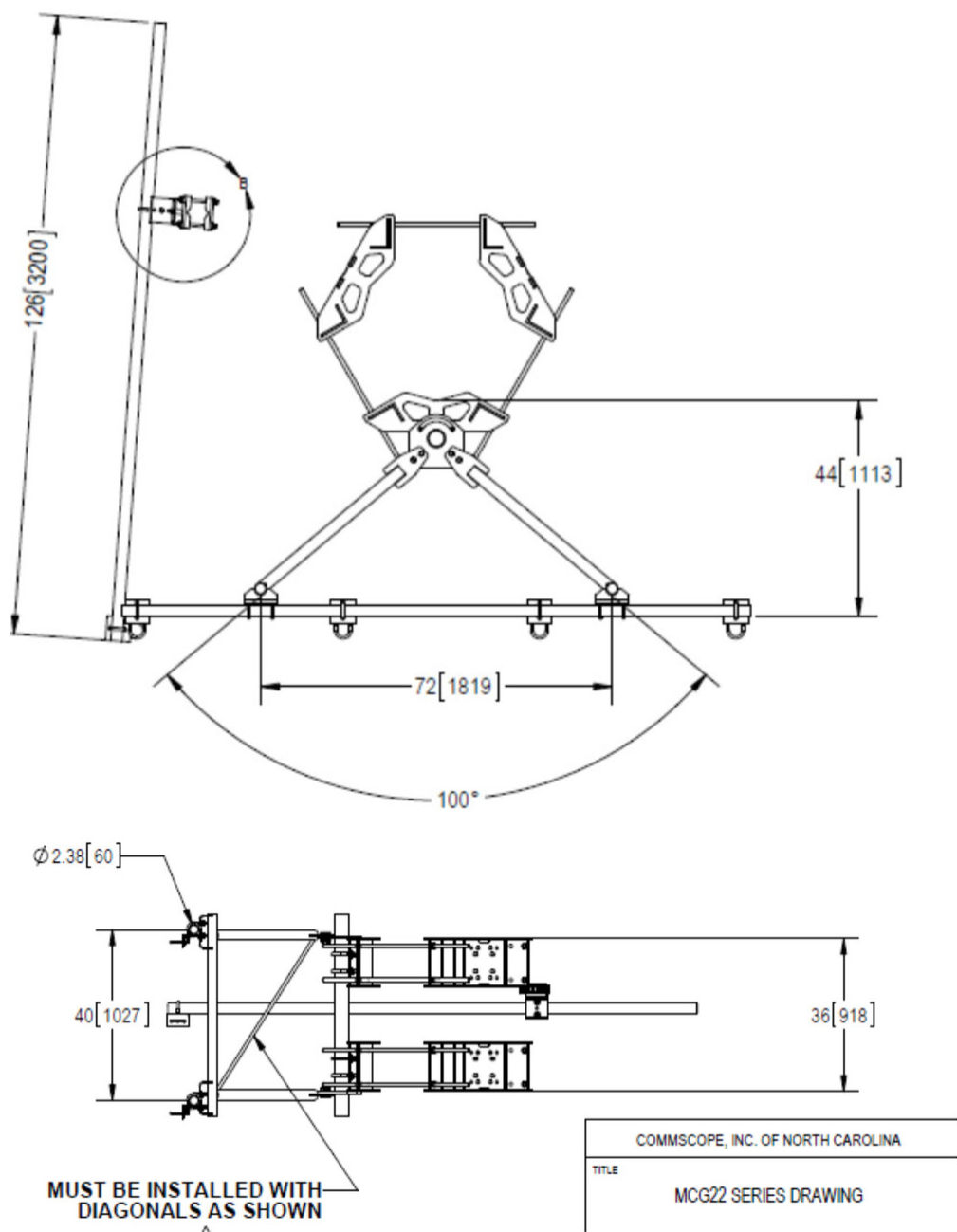
Mounting Diameter, minimum 381 mm | 15 in

Pipe Outer Diameter	60.325 mm 2.375 in
----------------------------	----------------------

Stand-off Distance 1,117.6 mm | 44 in

Outline Drawing

MCG22-10M-9-96



Material Specifications

Material Type Hot dip galvanized steel

Mechanical Specifications

Load Capacity With additional stiff arm at 300 ft AGL: 600 lb per pipe w/out ice / 2000 lb per pipe including ice

MCG22-10M-9-96

Wind Rating	For Specifications, please contact your local ANDREW representative
Wind Rating Test Method	TIA/EIA-222
Wind Rating with Additional Stiff Arm	300 ft AGL: 120 mph (BWS) without ice /60 mph with ice

Packaging and Weights

Included	Pipe mounts Plain end pipes (9) Ring mounts (2) Sector frames (3) Stiff arm
Packaging quantity	1
Weight, net	821.909 kg 1812 lb

Regulatory Compliance/Certifications

Agency	Classification
CHINA-ROHS	Above maximum concentration value
ISO 9001:2015	Designed, manufactured and/or distributed under this quality management system
ROHS	Compliant/Exempted
UK-ROHS	Compliant/Exempted



* Footnotes

Wind Rating	BWS—Base Wind Speed; FBC—Florida Building Code
Wind Rating with Additional Stiff Arm	BWS—Base Wind Speed; FBC—Florida Building Code