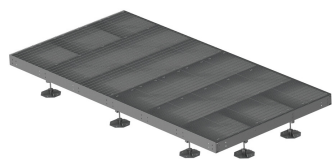


EQ-P1020-DF-CF



Concealed Foot Equipment Platform, 10 ft x 20 ft, base with seventeen displacement legs

Product Classification

Product Type Equipment platform system

General Specifications

Legs, quantity 17

Dimensions

Height 546.1 mm | 21.5 in
Width 3048 mm | 120 in
Length 6096 mm | 240 in

Material Specifications

Material Type Hot dip galvanized steel

Mechanical Specifications

Load Capacity Up to 10,000 lb (4536 kg) loading

Packaging and Weights

Included Frame | Grating | Hardware | Legs
Packaging quantity 1
Weight, net 1673 kg | 3,688.329 lb

Regulatory Compliance/Certifications

Agency	Classification
CHINA-ROHS	Above maximum concentration value
ROHS	Compliant/Exempted
UK-ROHS	Compliant/Exempted



