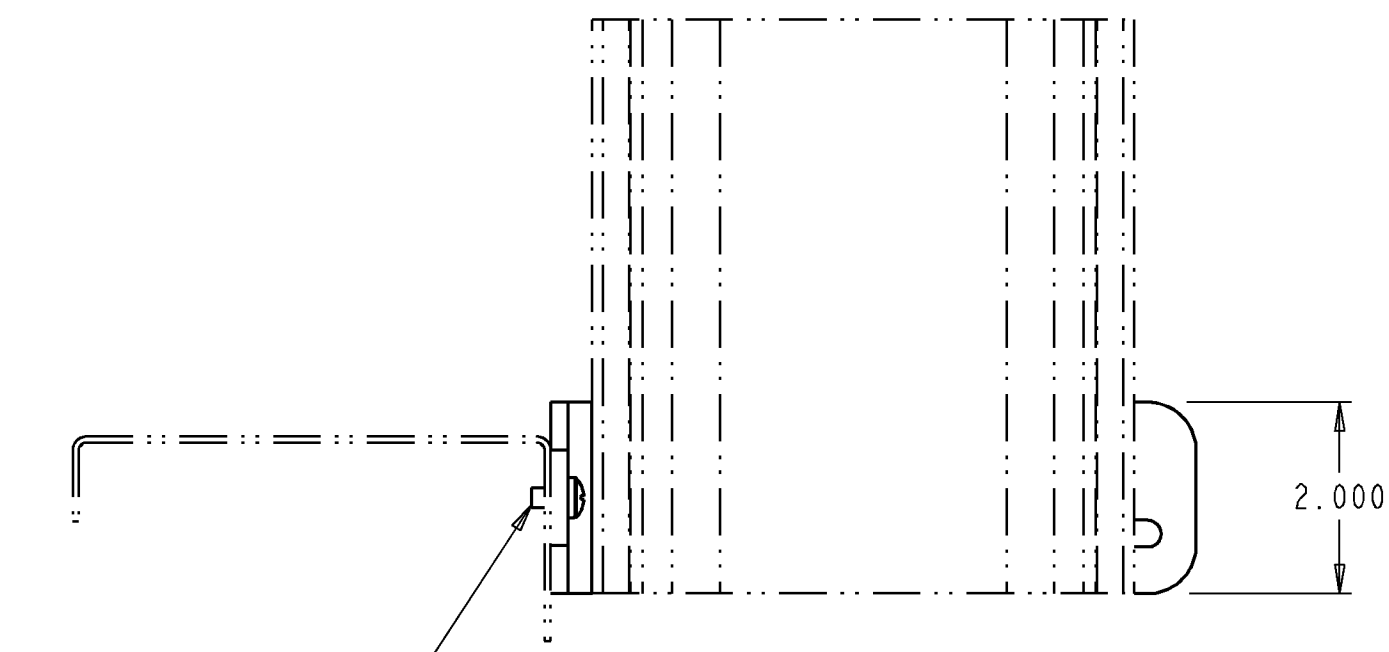


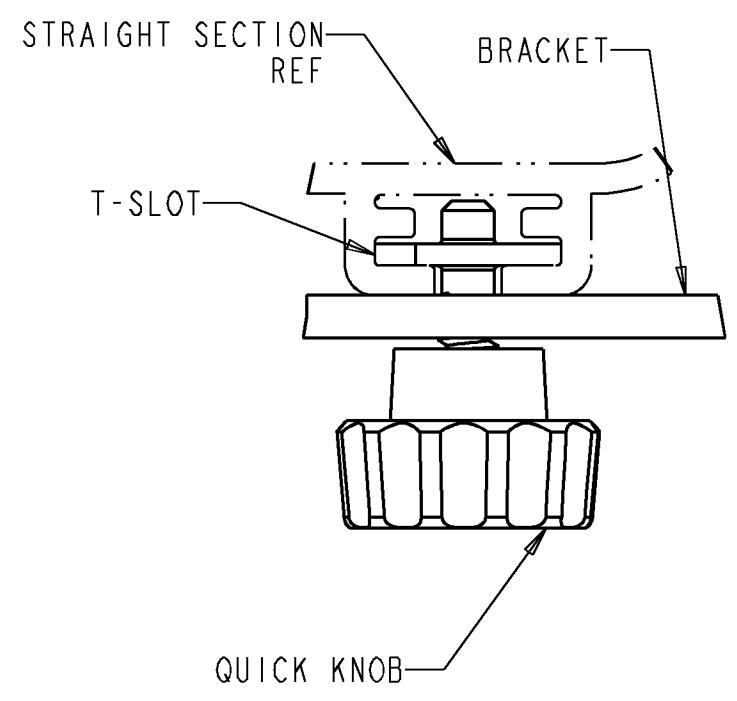
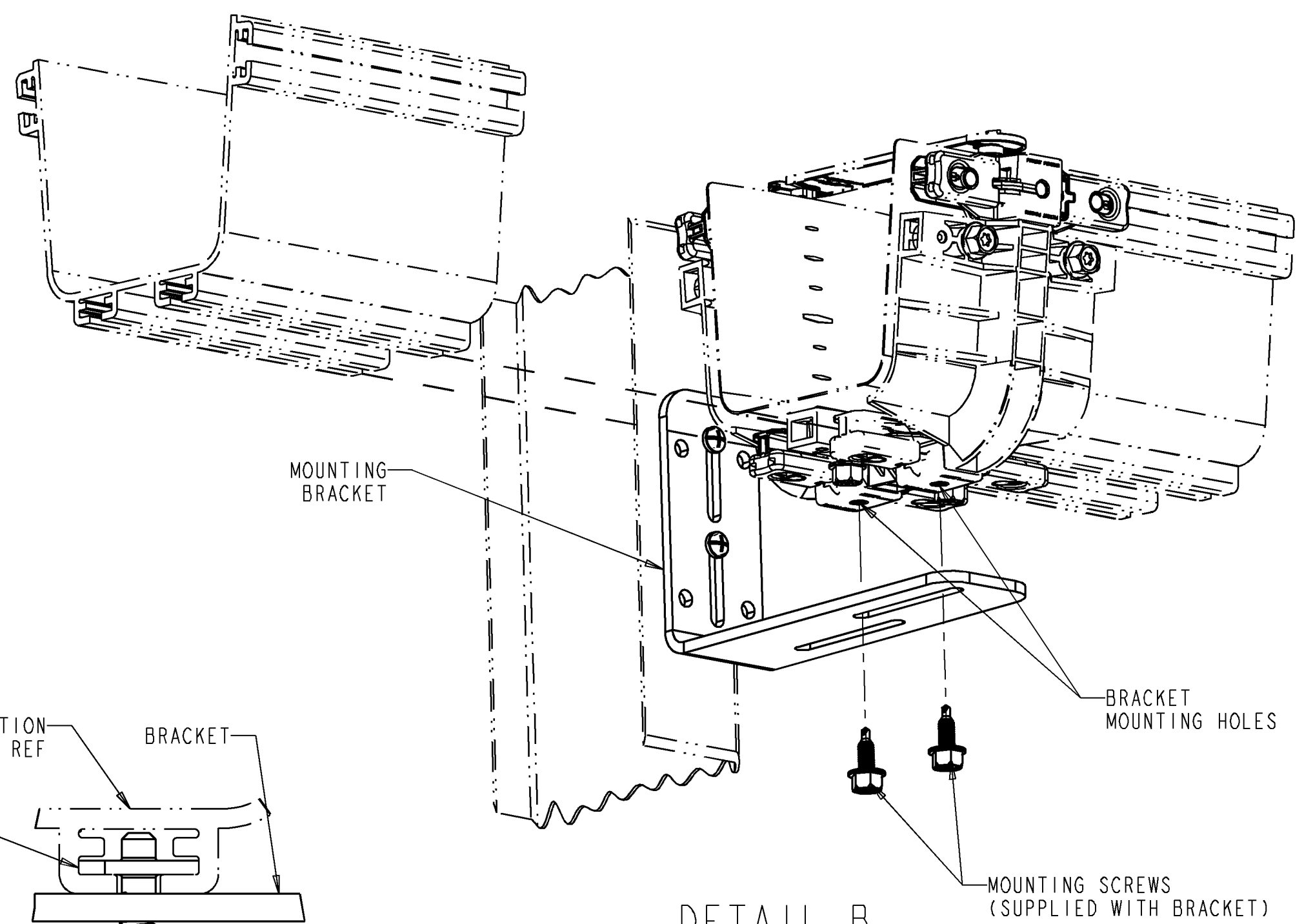
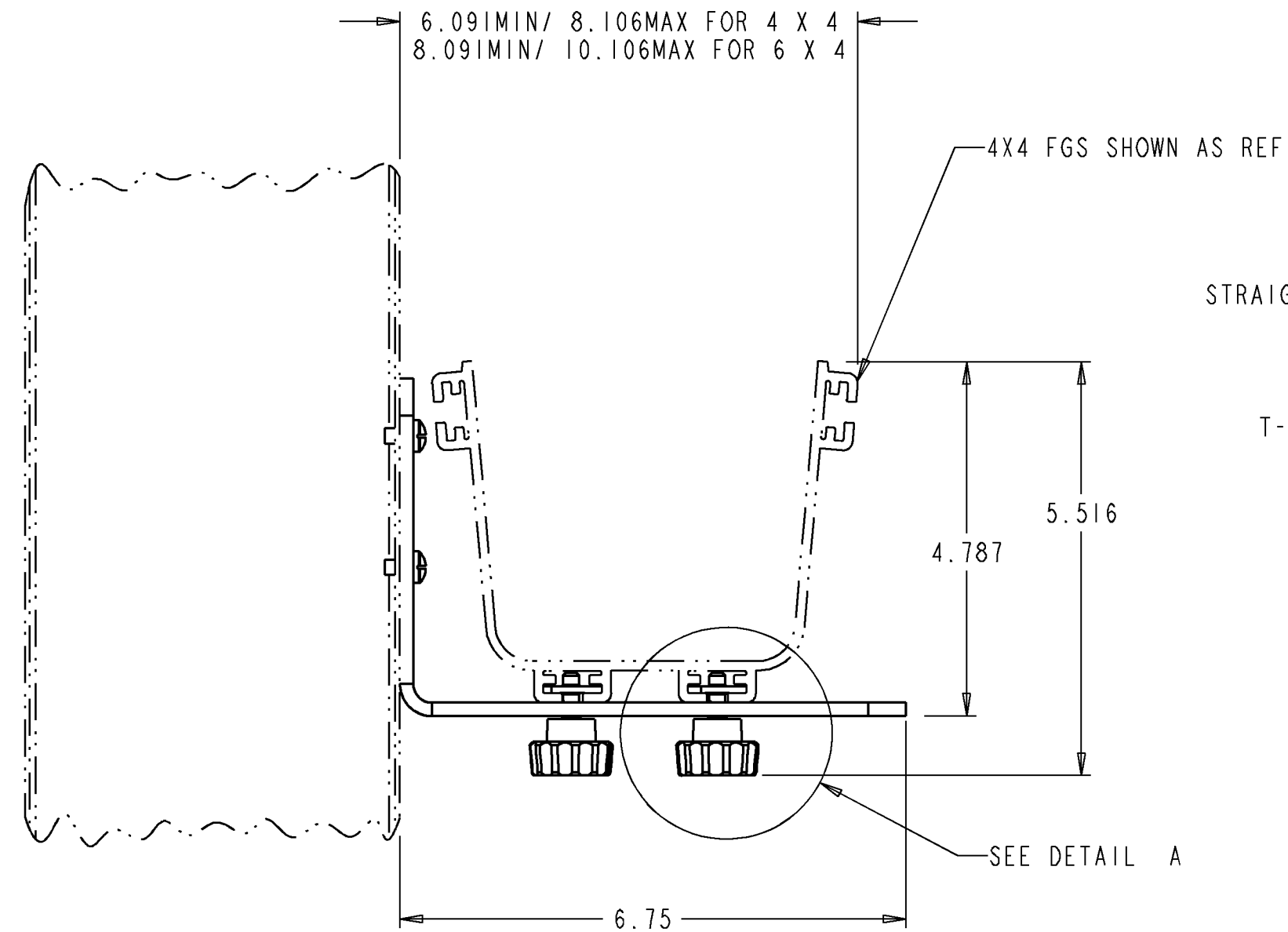
REV	ECO	DWN	DATE
A	20090195	CNW	10-MAY-01
B	20132598	JCS	17-MAR-03

KEY

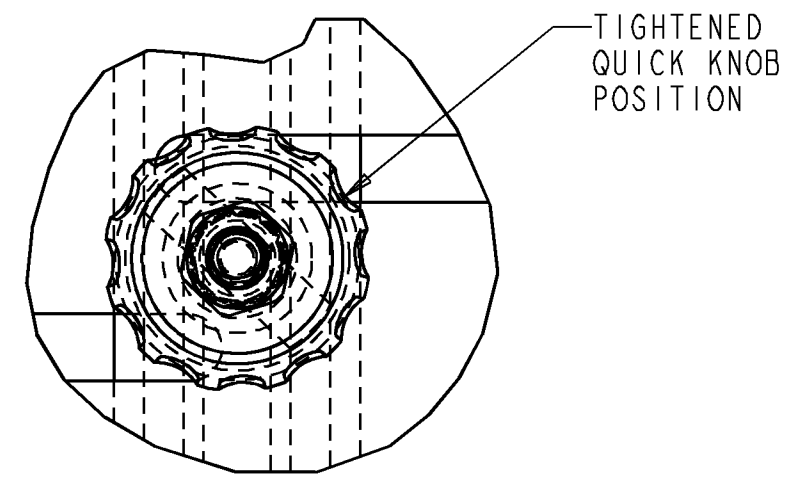
- COMPONENTS INCLUDED IN KIT.
- COMPONENTS NOT INCLUDED IN KIT.



(2) 12-24 X 3/8"
PAN HD SCREW
AND (2) #12 WASHERS
PROVIDED



DETAIL B
JUNCTION MOUNTING
SCALE 0.500



DETAIL A
QUICK KNOB ASSEMBLY
SCALE 1.250

NOTES:

1. THIS CONVERSION KIT INCLUDES THE FOLLOWING:

- MOUNTING BRACKET (1)
- #12-24 MOUNTING SCREW (2)
- QUICK KNOB ASSEMBLY (2)
- #12 FLAT WASHER (2)
- 1/4-20 JUNCTION MOUNTING SCREW (2)

2. QUICK KNOB INSTALLATION INSTRUCTIONS:

INSERT QUICK KNOB THROUGH BRACKET, ROTATE 90°, AND INTO T-SLOT IN FGS STRAIGHT SECTION. ROTATE CLOCKWISE SUCH THAT THE FLANGES EXTEND INTO T-SLOT. SEE DETAIL A.

3. SEE DETAIL B FOR JUNCTION MOUNTING OPTION. USE 1/4 INCH SCREWS INCLUDED WITH KIT.

INFORMATION ON THIS DOCUMENT IS PROPRIETARY TO ADC AND SHALL NOT BE USED, COPIED, REPRODUCED OR DISCLOSED IN WHOLE OR IN PART WITHOUT WRITTEN CONSENT OF ADC.		TITLE FIBERGUIDES "L" BRKT INSTALLATION DRAWING	
ALL DIMS AND TOLERANCES ARE INCHES UNLESS OTHERWISE SPECIFIED	.XX:±N/A .XXX:±N/A ANGULAR:±N/A	C SIZE	DRAWING NUMBER 1174905
DO NOT SCALE DRAWING	ENGR: DEREK DERKS DWN: CRAIG ZELASKO	B REV	
		SHT. 1 OF 1	

