

NOVUX™ Fiber Optic System CC 40 - Patch Application

About this manual

This installation instructions document describes the installation steps of the **patch application** of the Compact Closure 40 series. Installation steps in this document are limited to: splicing input of the connectors to the feeder fibers, patching SC cables and patching LC cables.

Installation steps of the feeder cables are explained in manual TC-1520-IP: CC 40 Basic Instructions.

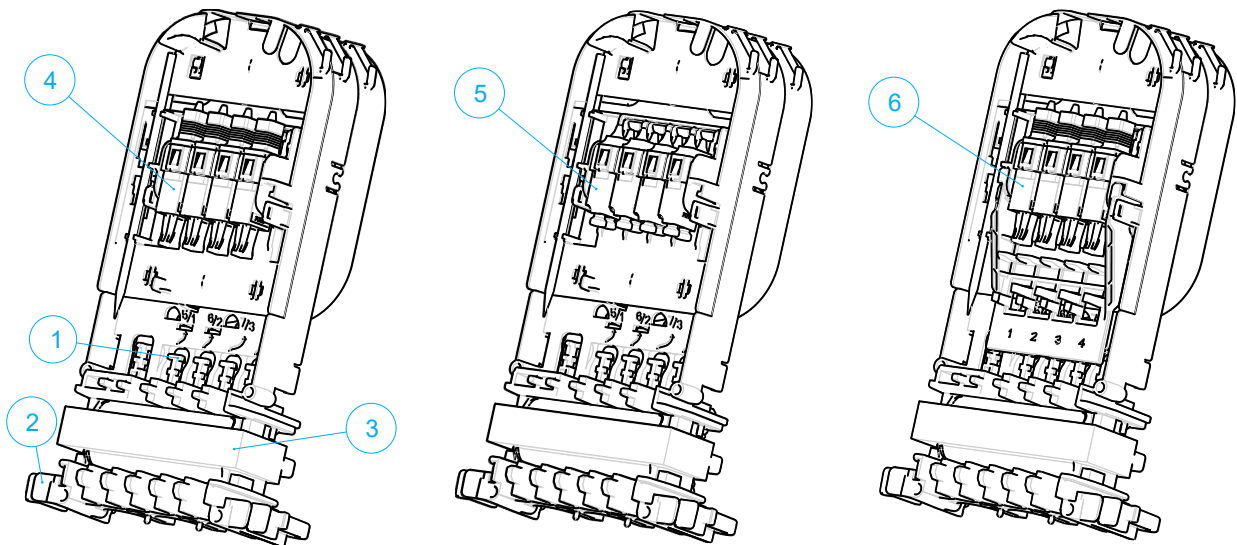
The document starts with providing an overview of the tools required to perform the installation. Also warnings and cautions are indicated, which should be observed before starting the product installation.

Images in this manual are for reference only and are subject to change.

General product information

	Quantity drops	installation method drops
SC/APC or SC/UPC	up to 4	Pre-connectorized with and without transition, Xpress drop
LC/APC or LC/UPC	up to 8	Pre-connectorized with and without transition, Xpress drop

Overview organizer



- 1 Drop cable strain relief T-shapes
- 2 Locking features
- 3 Octopus™ gel seal
- 4 SC adapters
- 5 LC adapters
- 6 SC Xpress drop

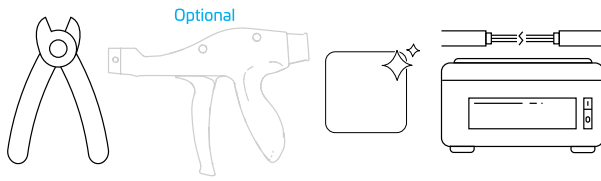
Contents

1 Abbreviations.....	3	5 Pre-connectorized cable.....	5
2 Tools.....	3	5.1 Install SC-connectorized drop cable.....	5
3 Warnings and Cautions.....	3	5.2 Install LC-connectorized cable.....	6
4 Splice feeder to input connector.....	3	5.3 Install SC/LC Xpress drop.....	7
4.1 Splice feeder direct to input connector.....	4	6 Trade-marks.....	8
4.2 Splice feeder to factory installed splitter.....	4	7 Contact information.....	8

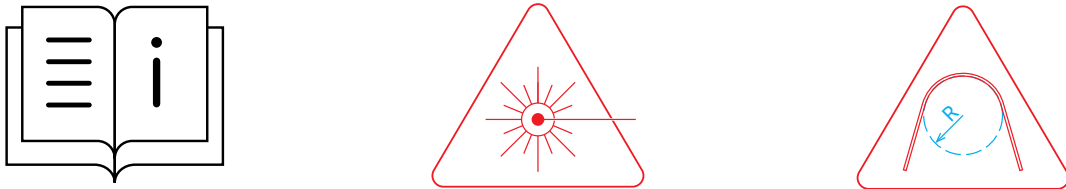
1 Abbreviations

CC: Compact Closure

2 Tools



3 Warnings and Cautions

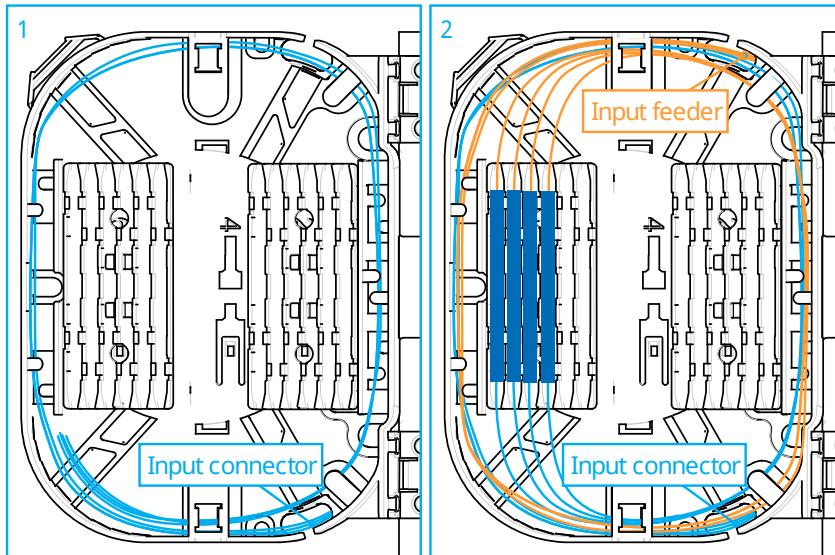


- Follow the installation instruction steps to ensure the performance of the closure. It is necessary to take precautions and keep the working space clean to protect the closure sealing materials and splices.
- Exposure to laser radiation can seriously damage the retina of the eye. Do not look into the ends of any optical fiber. Do not assume the laser power is turned off or that the fiber is disconnected at the other end. Looking into the ends of any optical fiber is entirely at your own risk. A protective cap or hood **MUST** be immediately placed over any radiating adapter or optical fiber connector to avoid the potential of dangerous amounts of radiation exposure. This practice also prevents dirt particles from entering the connector and adapter.
- Fiber optic cables may be damaged if bent or curved to a radius that is less than the recommended minimum bend radius. Always observe the recommended bend radius limit when installing fiber optic cables, subunits and patch cords.


4 Splice feeder to input connector

Prepare and install the feeder cable as explained in the CC 40 base instructions TC-1520-IP. Route feeder fibers to the splice zone of the hinged tray.

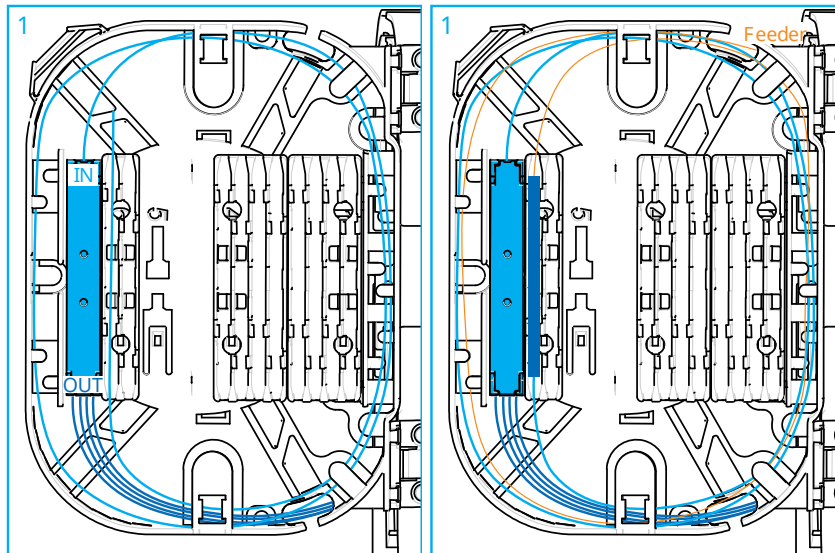
4.1 Splice feeder direct to input connector




- 1 The inputs of the connectors patched at the front are routed to the splice side of the hinged tray as shown in image above. The 250 μ m fiber is already prepared.
- 2 Splice the input of the connectors to the feeder fibers by making a fusion splice: make fusion splice per standard practice, store the splice protector in the splice protector holder and store over length in loops on the tray.

 **Note:** The fiber guidance pen can be used to position all the fibers underneath the lips. Make sure all fibers are properly positioned underneath the lips and avoid bulging of the fiber.

4.2 Splice feeder to factory installed splitter




- 1 A splitter is installed on the hinged tray. The splitter outputs are already connected to the patch panel at the front side. The input of the splitter is a 900 μ m fiber that should be stripped and spliced to a feeder fiber.
- 2 Splice the input of the splitter to the feeder fiber by making a fusion splice: make fusion splice per standard practice, store the splice protector in the splice protector holder and store over length in loops on the tray.

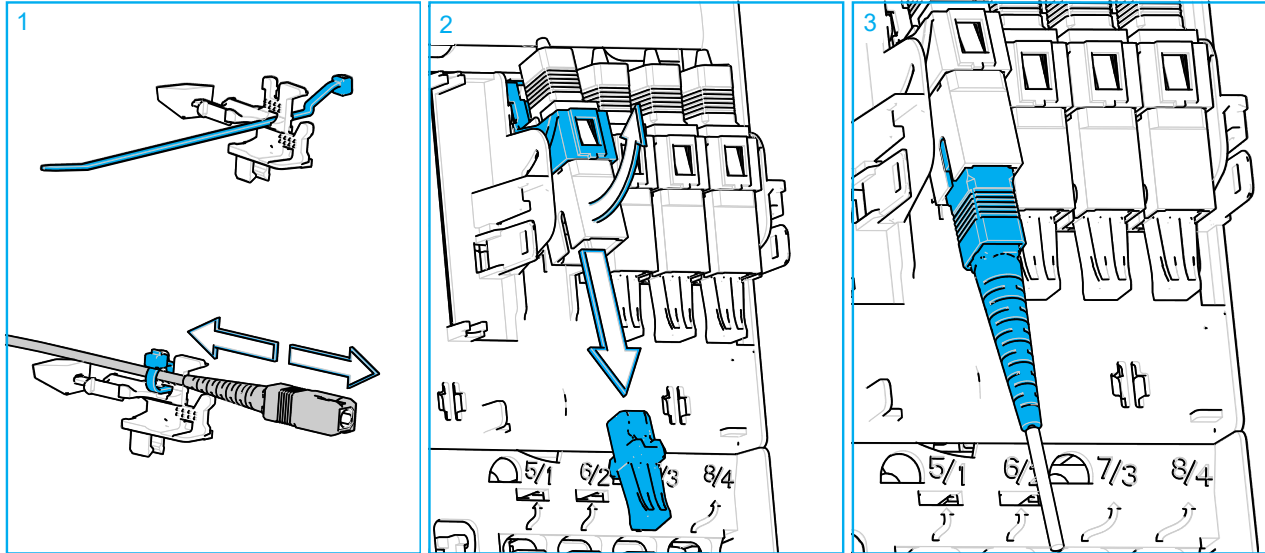
 **Note:** The fiber guidance pen can be used to position all the fibers underneath the lips. Make sure all fibers are properly positioned underneath the lips and avoid bulging of the fiber.

5 Pre-connectorized cable

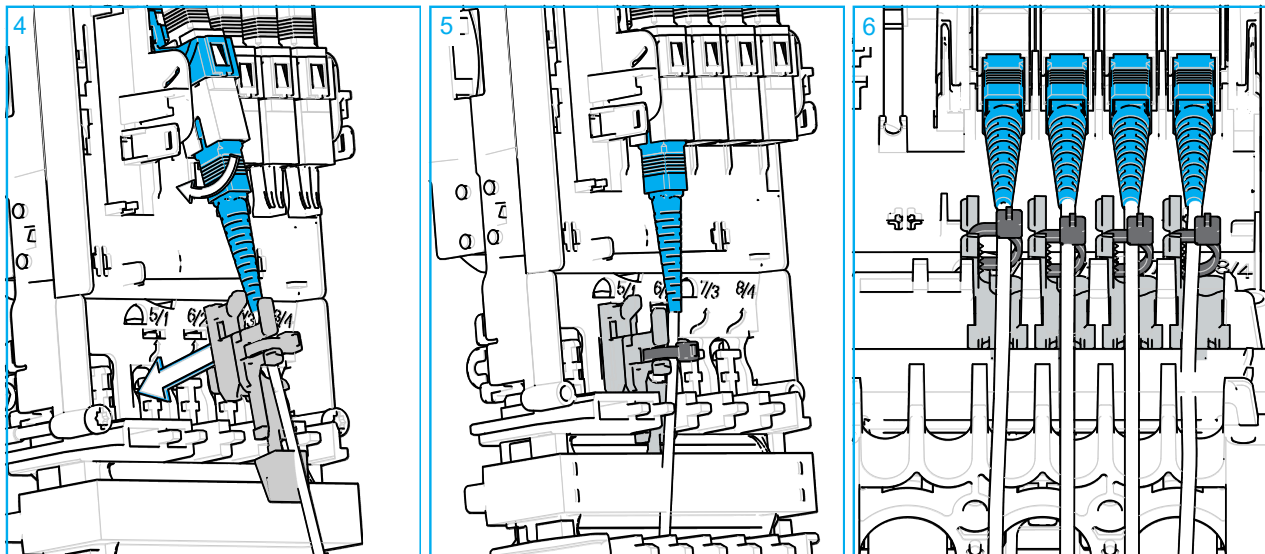
5.1 Install SC-connectorized drop cable

The separate cable retention kit TC-1529-IP (Cable retention: Mini dual cable) must be used to install the SC-connectorized cable in the CC 40 patch application.

 **Note:** The drop ports are designated with the numbers 5/1, 6/2, 7/3 and 8/4. (4 SC connections in total)



- 1 Install a cable tie in the top slot at the top position of the carrier. Make sure the heads are oriented correctly. Install the pre-connectorized cable and fasten the cable ties but don't tighten. The cable should move fluently up and down.
- 2 Swing the adapter port upwards and remove the dust caps of both connector and adapter of the selected port. Clean the connector and adapter per standard practice.
- 3 Position the connector in the correct orientation (rib facing as shown in figure above). Connect the connector to the assigned port. A clicking sound is observed when the connector is properly seated.

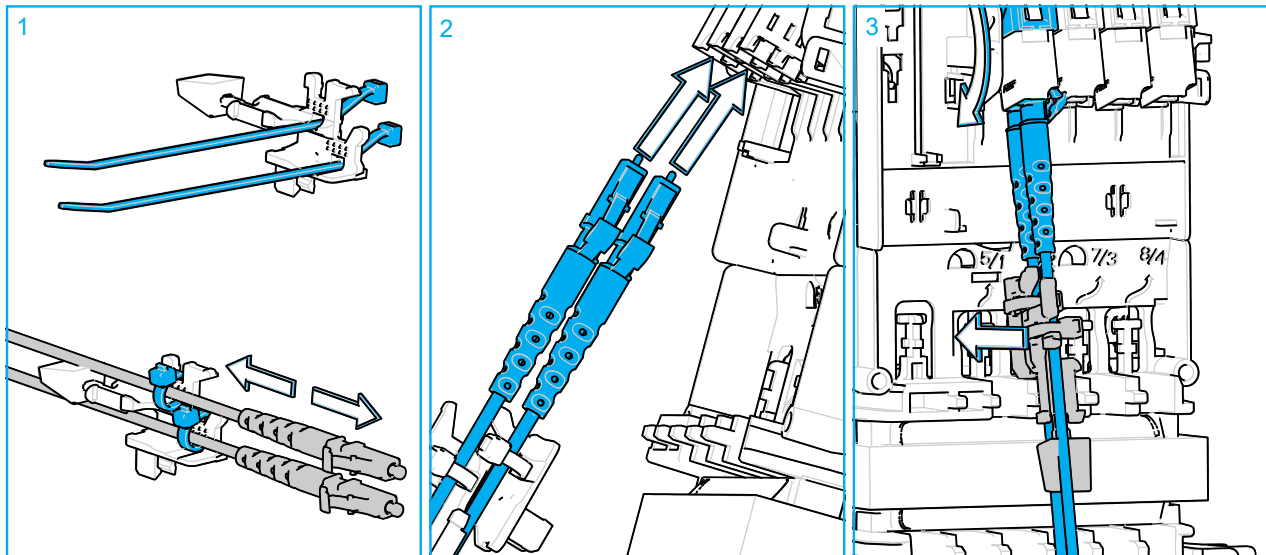


- 4 Slide the carrier with the cable ties over the cables up to the height of the t-shape. Swing the adapter port with cable back in its original position.
- 5 Punch the carrier in the t-shape.
- 6 Repeat the previous steps to install the other drop cables. Each cable should be routed to a separate entrance port. Press each cable between the two ribs of the entrance port below the adapter port.

5.2 Install LC-connectorized cable

The separate cable retention kit TC-1529-IP (Cable retention: Mini dual cable) must be used to install the LC-connectorized cable in the CC 40 patch application.

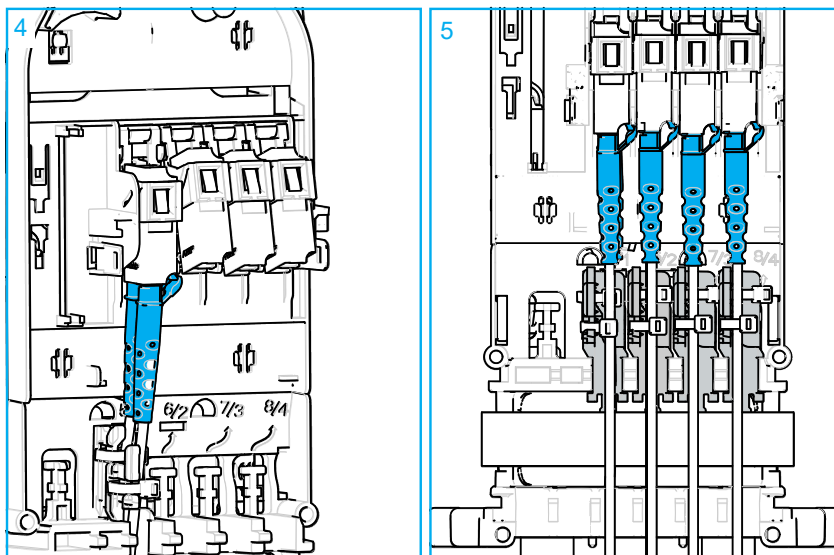
Note: The drop ports are designated with the numbers 5/1, 6/2, 7/3 and 8/4 (two adapter per port, allowing to make 8 LC connections in total).



1 Install a cable tie in the slot of the carrier at the bottom position and one in the slot at the top position. Make sure the heads are oriented correctly. Install the pre-connectorized cable on each level and fasten the cable ties but don't tighten. The cable should move fluently up and down.

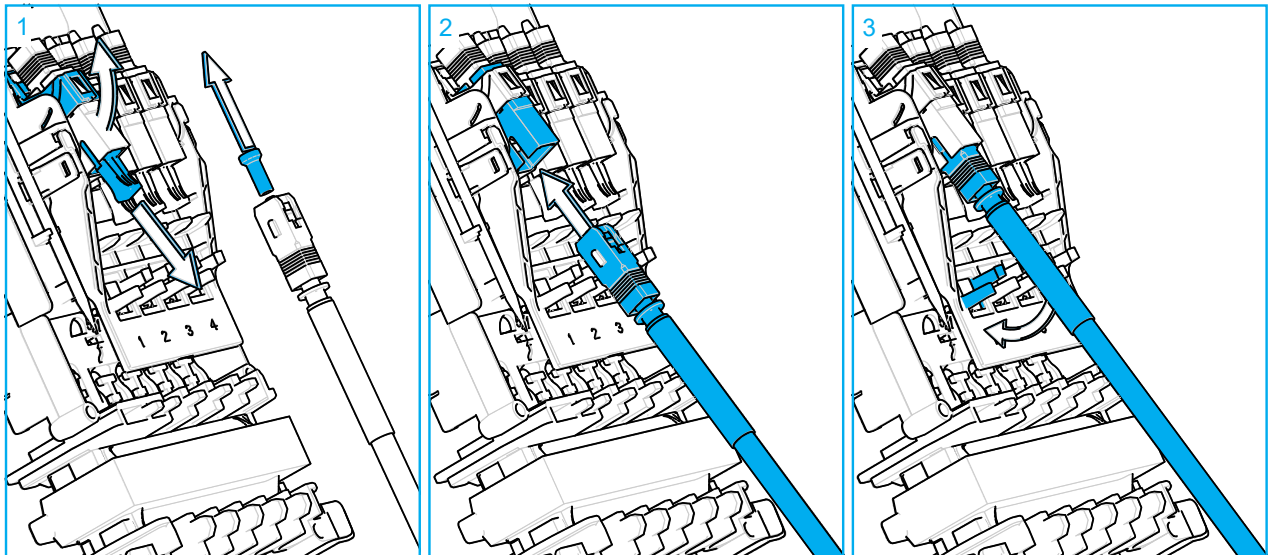
Note: If only one cable to be installed, select the top position.

- 2 Swing the adapter port upwards. Remove the dust caps of both connectors and adapters of the selected ports. Clean the connectors and adapters per standard practice. Position the connectors in the correct orientation. Connect the connectors to the assigned ports.
- 3 Slide the carrier with the cable ties over the cables up to the height of the t-shape. Swing the adapter port with cable back in its original position.

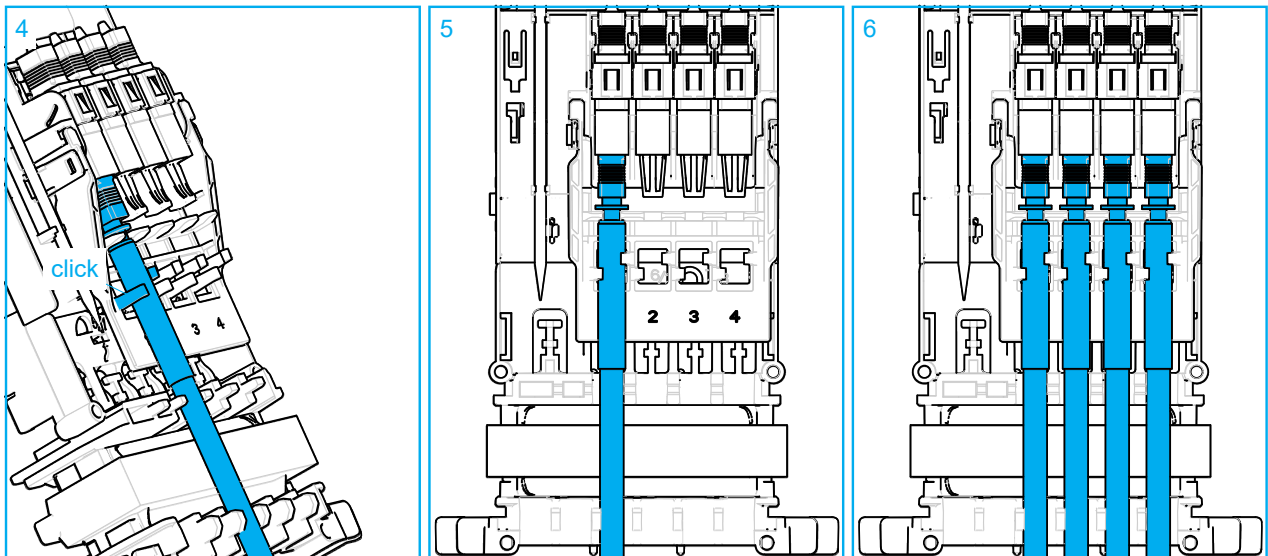


- 4 Punch the carrier in the t-shape.
- 5 Repeat the previous steps to install the other drop cables. Press the cables between the two ribs of the entrance port below the carrier.

5.3 Install SC/LC Xpress drop



- 1 Remove dust caps of both the connector and the adapter port. Clean per standard practice. Swing the adapter port upwards.
- 2 Position the connector in the correct orientation. Connect the connectorized drop to its assigned port. A clicking sound is observed when the connector is properly seated.
- 3 Swing the adapter port with cable back in its original position.



- 4 The metal ring just under the connector will click into the two snap hooks. The cable is hold between the two snap hooks positioned lower on the organizer.
- 5 First Xpres drop cable installed.
- 6 All Xpres drop cables installed.

6 Trade-marks

All trademarks identified by ® are registered trademarks in the US and may be registered in other countries. All third party product names, trademarks and registered trademarks are property of their respective owners.

This document is for planning purposes only and is not intended to modify or supplement any specifications or warranties relating to CommScope products or services. CommScope is committed to the highest standards of business integrity and environmental sustainability, with a number of CommScope's facilities across the globe certified in accordance with international standards, including ISO 9001, TL 9000, and ISO 14001.

Further information regarding CommScope's commitment can be found at: <https://www.commscope.com/corporate-responsibility-and-sustainability>.

This product may be covered by one or more U.S. patents or their foreign equivalents. For patents, see www.cs-pat.com

7 Contact information

Visit our website or contact your local CommScope representative for more information.

For technical assistance, customer service, or to report any missing/damaged parts, visit us at: <http://www.commscope.com/SupportCenter>