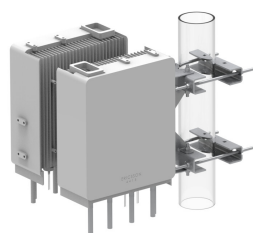


RR-FA4



RRU Mount Kit for Back-to-Back Mounting of (2) RRUs on up to 5.6" Round, 6" 60 degree or 4.5" 90 Degree Angle

- Accommodates a wide variety of radios.
- Features integrated lifting points for safe and efficient hoisting of radios to the mounting location
- Supports all typical RRH units from Ericsson, ERS and RRUS

Product Classification

Product Type	Remote radio head unit mount
Ordering Note	ANDREW® standard product with terms
Warranty	One year

General Specifications

Mounting	Round and angle legs
Radio Compatibility, Ericsson	(2) RRUS11/12/32, 2212, 4415, 4426, 4478 4426 4435 4449 4455 4460 4467 4478 4480 4490 4890 8843 8843
Tower Taper	Non-tapered Tapered

Dimensions

Height	388.62 mm 15.3 in
Width	215.9 mm 8.5 in
Length	650.24 mm 25.6 in
Mounting Diameter 2, maximum	152.4 mm 6 in
Mounting Diameter 2, minimum	38.1 mm 1.5 in
Mounting Diameter, maximum	142.24 mm 5.6 in
Mounting Diameter, minimum	60.96 mm 2.4 in

Material Specifications

Material Type	Hot dip galvanized steel
---------------	--------------------------

Packaging and Weights

RR-FA4

Included	Clamps Hardware
Packaging quantity	1
Weight, net	21.913 kg 48.31 lb

Regulatory Compliance/Certifications

Agency	Classification
CHINA-ROHS	Above maximum concentration value
ROHS	Compliant/Exempted
UK-ROHS	Compliant/Exempted



* Footnotes

Warranty	For more information, please consult our Product Warranty guidelines
----------	--