

P040-0024 Revision B, SEP 2021

Mounting Kits For Wide Panel Antennas

BSAMNT-8, BSAMNT-M8: Mounting systems for cylindrical pipe installations (75-115 mm pipe diameter) for heavy duty applications.

This document explains how to install an antenna using a BSAMNT mount kit. Antennas with two mount points will use BSAMNT-8. Antennas with three mount points will also use BSAMNT-M8.

ITEM NO.	DESCRIPTION	BSAMNT-8 QUANTITY	BSAMNT-M8 QUANTITY
1	CLAMP ASSY	1	1
2	CLAMP ASSY	1	N/A
3	BRACKET,DOWN TILT KIT	1	N/A
4	BRACKET,MIDDLE DOWN TILT KIT	N/A	1
5	MOUNTING PLATE	1	1
6	POLE CLAMP	2	1
7	BOLT,CARRIAGE,M12X40,STL,GALV	4	4
8	SCR,HCS,HEX,M12X45,STL,GALV	4	2
9	WSHR,FLT,M12,13X24X2.5,STL,GALV	16	10
10	NUT,HEX,M12,STL,GALV	24	16
11	NUT,HEX,M10,STL,GALV	2	2
12	BOLT,CARRIAGE,M10X35,STL,GALV	2	2
13	SPECIAL NUT,M10 STL GALV	2	2

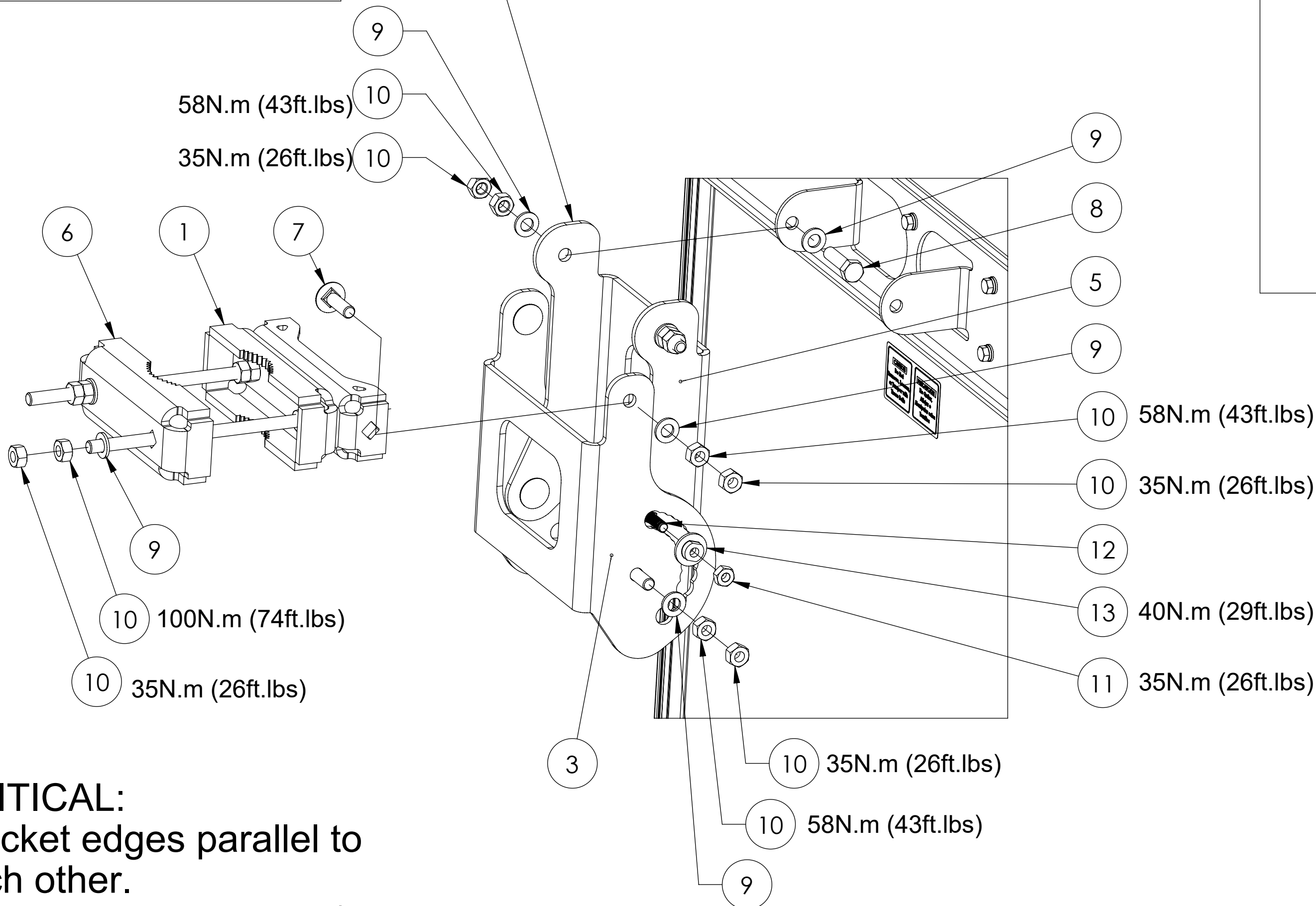


All fasteners must be tightened to the defined torque value after onsite installation to the specified tilt position, including installation at 0-degree, see the mounting kit installation diagrams on the following pages for the correct torque recommendations.



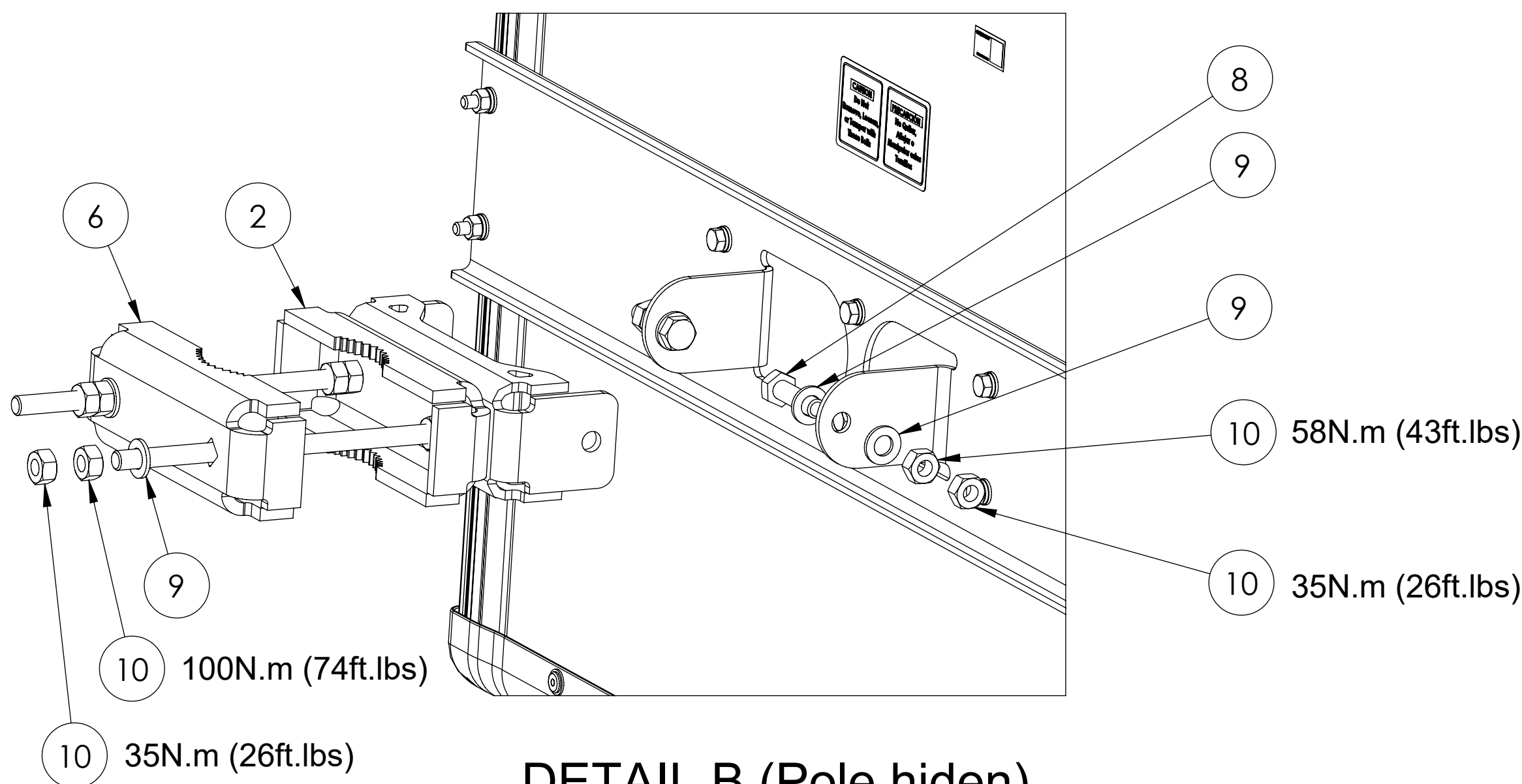
REQUIRED TORQUE	
M10	40N.m (29ft.lbs)
	35N.m (26ft.lbs)
M12	100N.m (74ft.lbs)
	58N.m (43ft.lbs)
	50N.m (37ft.lbs)
	35N.m (26ft.lbs)

**CRITICAL:** For initial installation to pipe, downtilt brackets must be configured in pre-assembly position (fully collapsed).

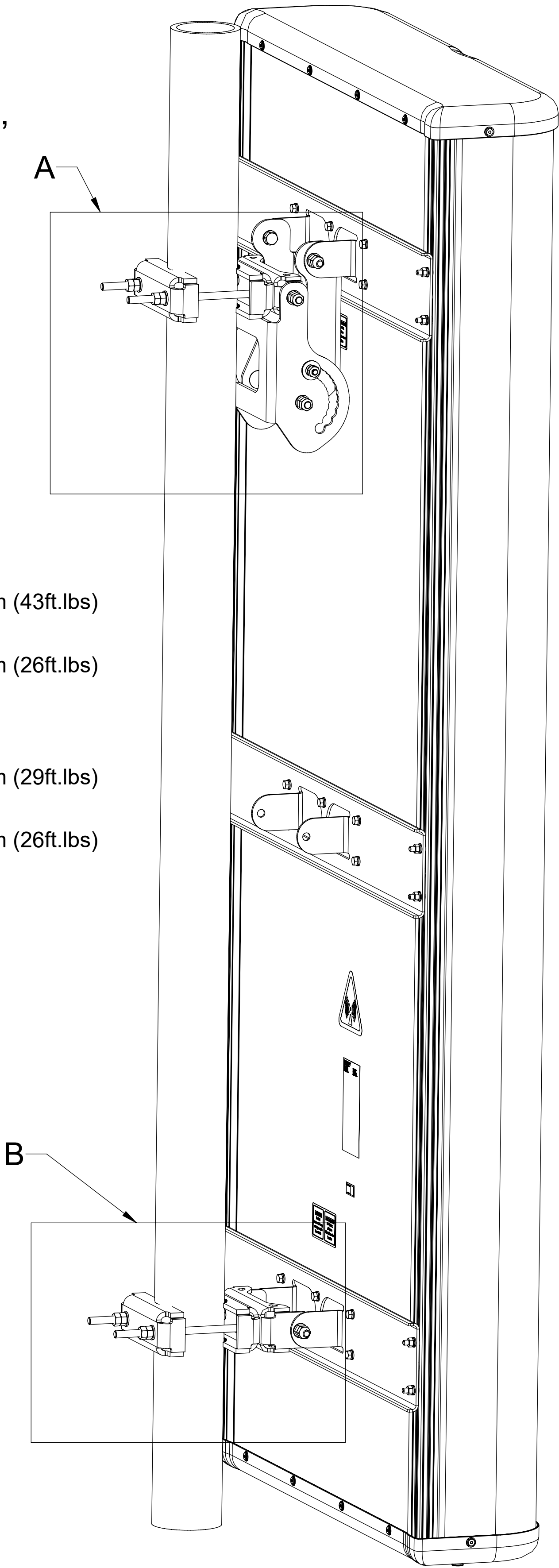


**CRITICAL:**  
Bracket edges parallel to  
each other.  
(fully collapsed position)

### DETAIL A (Pole hidden)



### DETAIL B (Pole hidden)



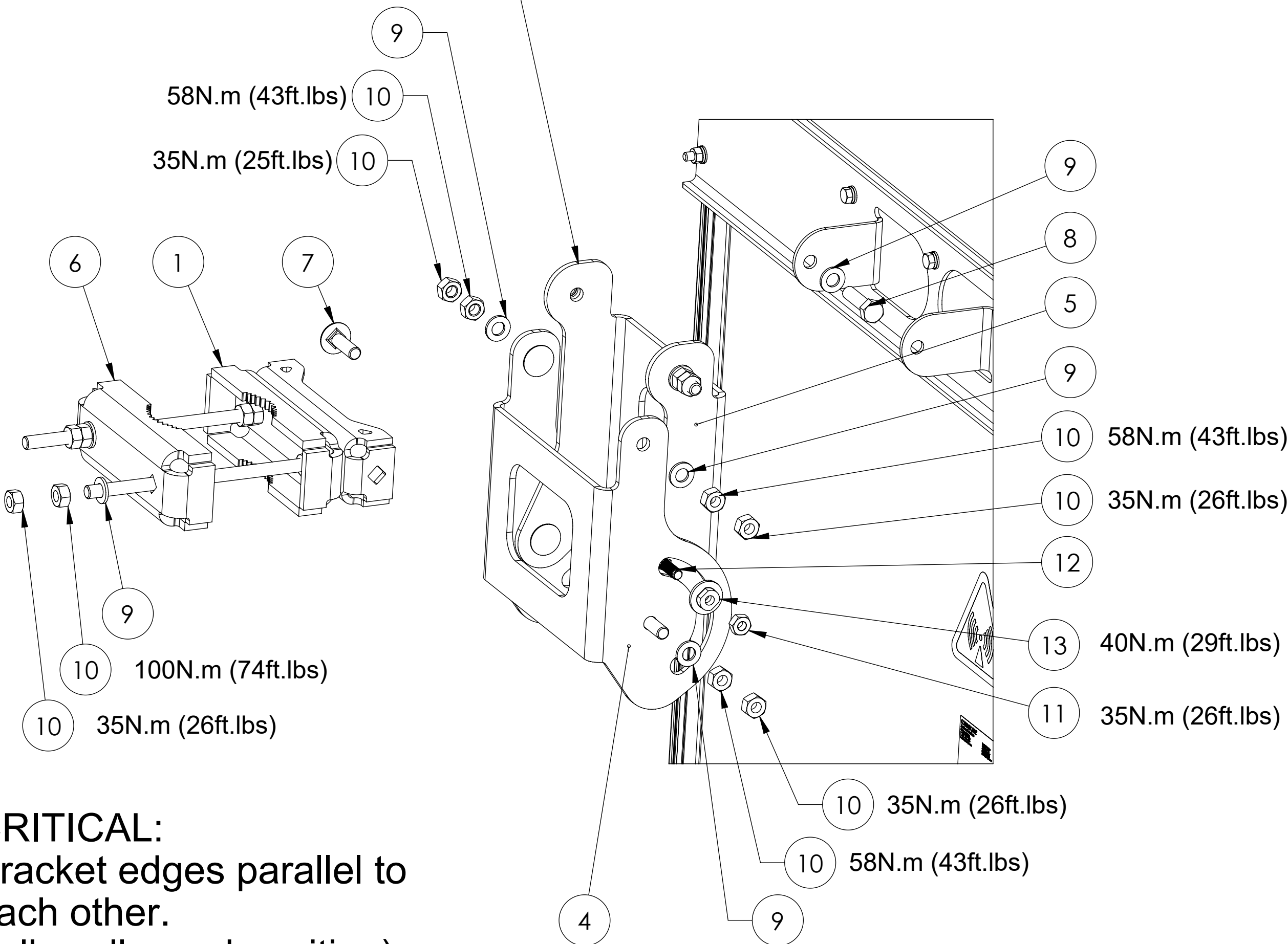
## 2 Point Mount Installations





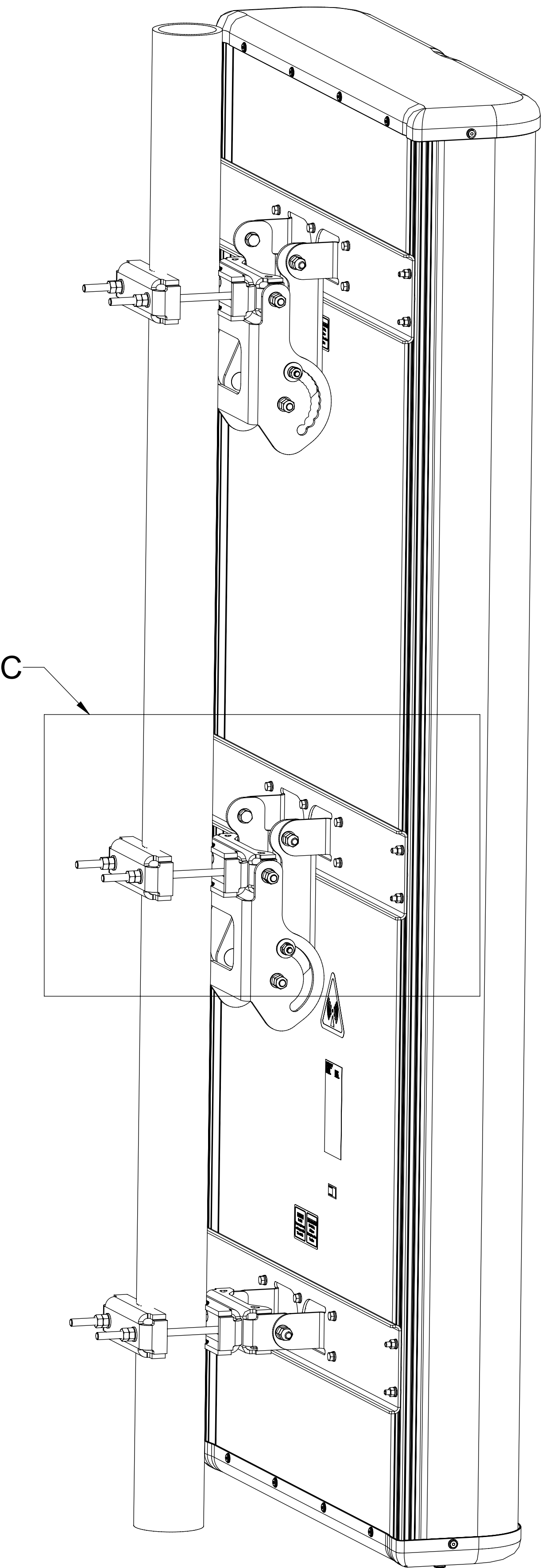
REQUIRED TORQUE	
M10	40N.m (29ft.lbs)
	35N.m (26ft.lbs)
M12	100N.m (74ft.lbs)
	58N.m (43ft.lbs)
	50N.m (37ft.lbs)
	35N.m (26ft.lbs)

**CRITICAL:** For initial installation to pipe, downtilt brackets must be configured in pre-assembly position (fully collapsed).



**CRITICAL:**  
Bracket edges parallel to  
each other.  
(fully collapsed position)

### DETAIL C (Pole hidden)

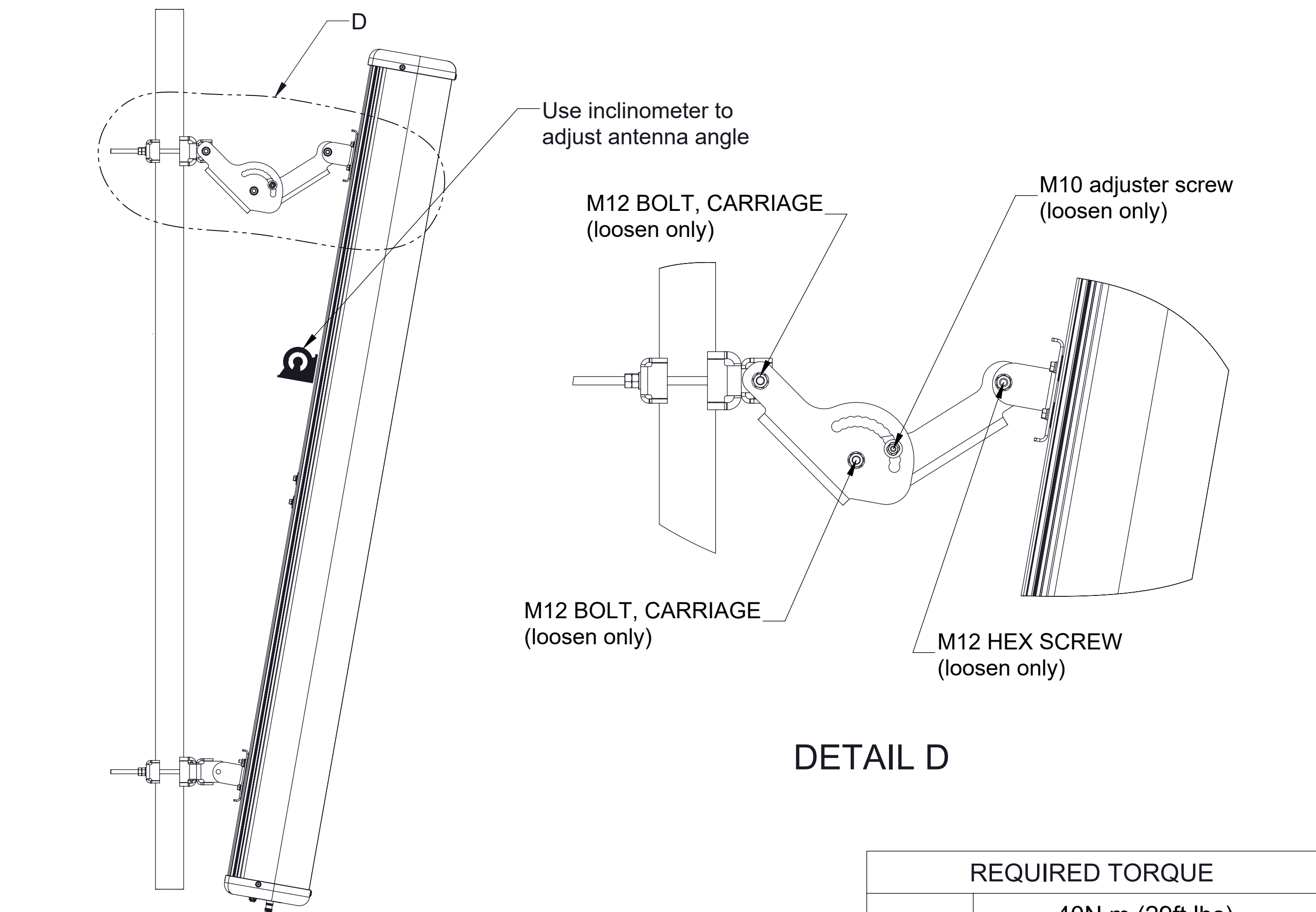


## 3 Point Mount Installations



- Loosen pivot screws .
- Loosen adjuster screws.
- Adjust antenna angle with angle rulers. (use inclinometer to check)
- Tighten adjuster screws.
- Retighten all fasteners.

WARNING:  
SOME PIVOT SCREWS LOOSEN ONLY,  
DO NOT REMOVE!

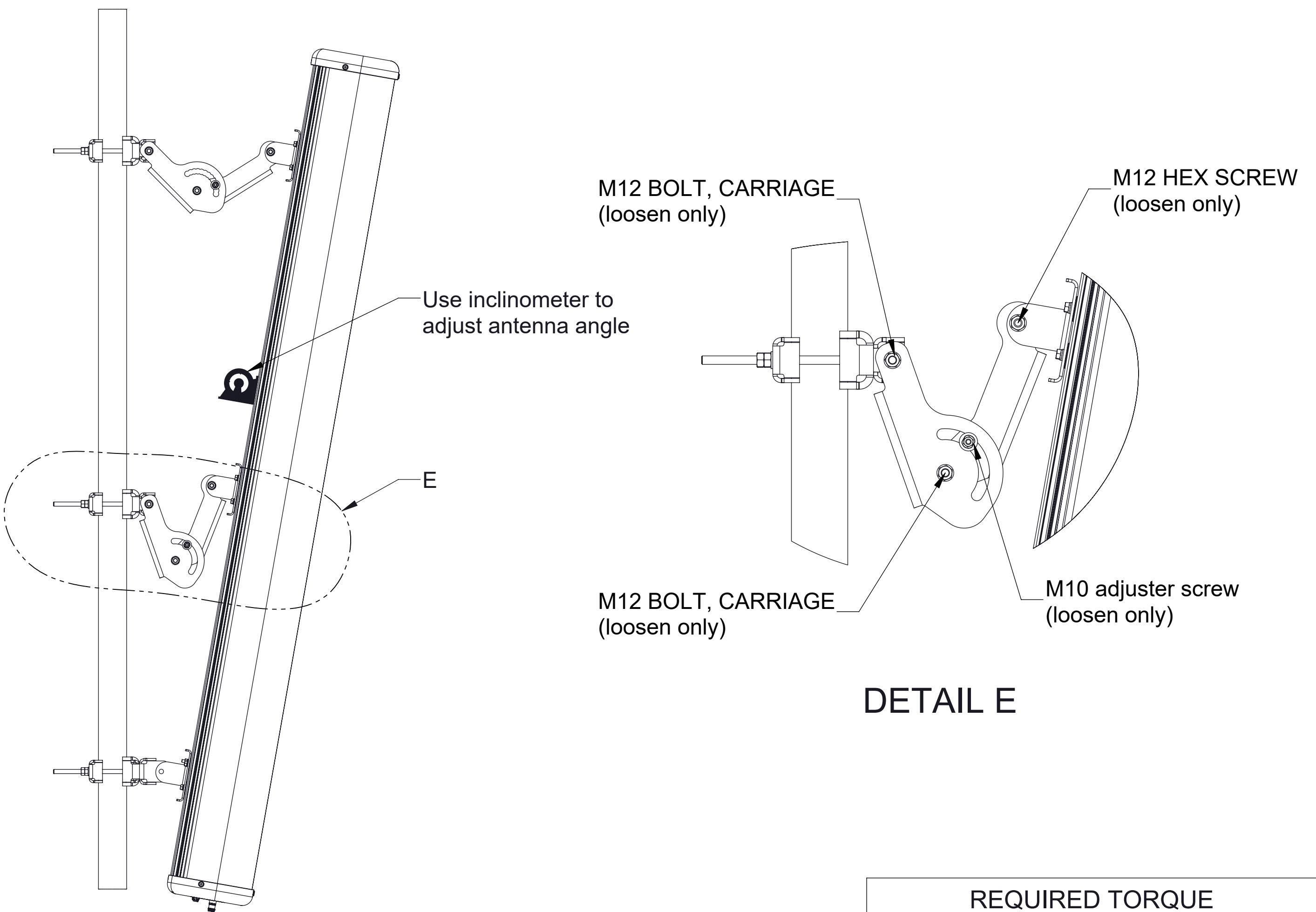


REQUIRED TORQUE	
M10	40N.m (29ft.lbs)
	35N.m (26ft.lbs)
M12	35N.m (25ft.lbs)
	58N.m (43ft.lbs)

Adjusting Antenna Tilt - 2 POINT MOUNT

- Loosen pivot screws .
- Loosen adjuster screws.
- Adjust antenna angle with angle rulers. (use inclinometer to check)
- Tighten adjuster screws.
- Retighten all fasteners.

WARNING:  
SOME PIVOT SCREWS LOOSEN ONLY,  
DO NOT REMOVE!



REQUIRED TORQUE	
M10	40N.m (29ft.lbs)
	35N.m (26ft.lbs)
M12	35N.m (25ft.lbs)
	58N.m (43ft.lbs)

Adjusting Antenna Tilt - 3 POINT MOUNT

Remote Electrical  
Tilt Connection



The AISG connector fitted to the antenna is designed to accept any AISG compliant cable assembly, commscope recommends hand tightening AISG mating connector only. Applied torque to the connector shall not exceed 1.5N\*m.

RF Cable Connection



The female RF connectors fitted to the antenna are designed to fit jumper cables with standard related male RF connector. Tighten the RF connector coupling according to torque specification in antenna label, if the RF connectors are tightened beyond the recommend torque, the RF connection to the antenna may be damaged.

**SAFETY NOTICE**

The installation, maintenance, or removal of an antenna requires qualified, experienced personnel. CommScope installation instructions are written for such installation personnel. Antenna systems should be inspected once a year by qualified personnel to verify proper installation, maintenance, and condition of equipment.

CommScope disclaims any liability or responsibility for the results of improper or unsafe installation practices.

It is recommended that transmit power be turned off when the field installation is performed. Follow all applicable safety precautions as shown on this page.



Do not install near power lines. Power lines, telephone lines, and guy wires look the same. Assume any wire or line can electrocute you.



Do not install on a wet or windy day or when lightning or thunder is in the area. Do not use metal ladder.



Wear shoes with rubber soles and heels. Wear protective clothing including a long-sleeved shirt and rubber gloves.