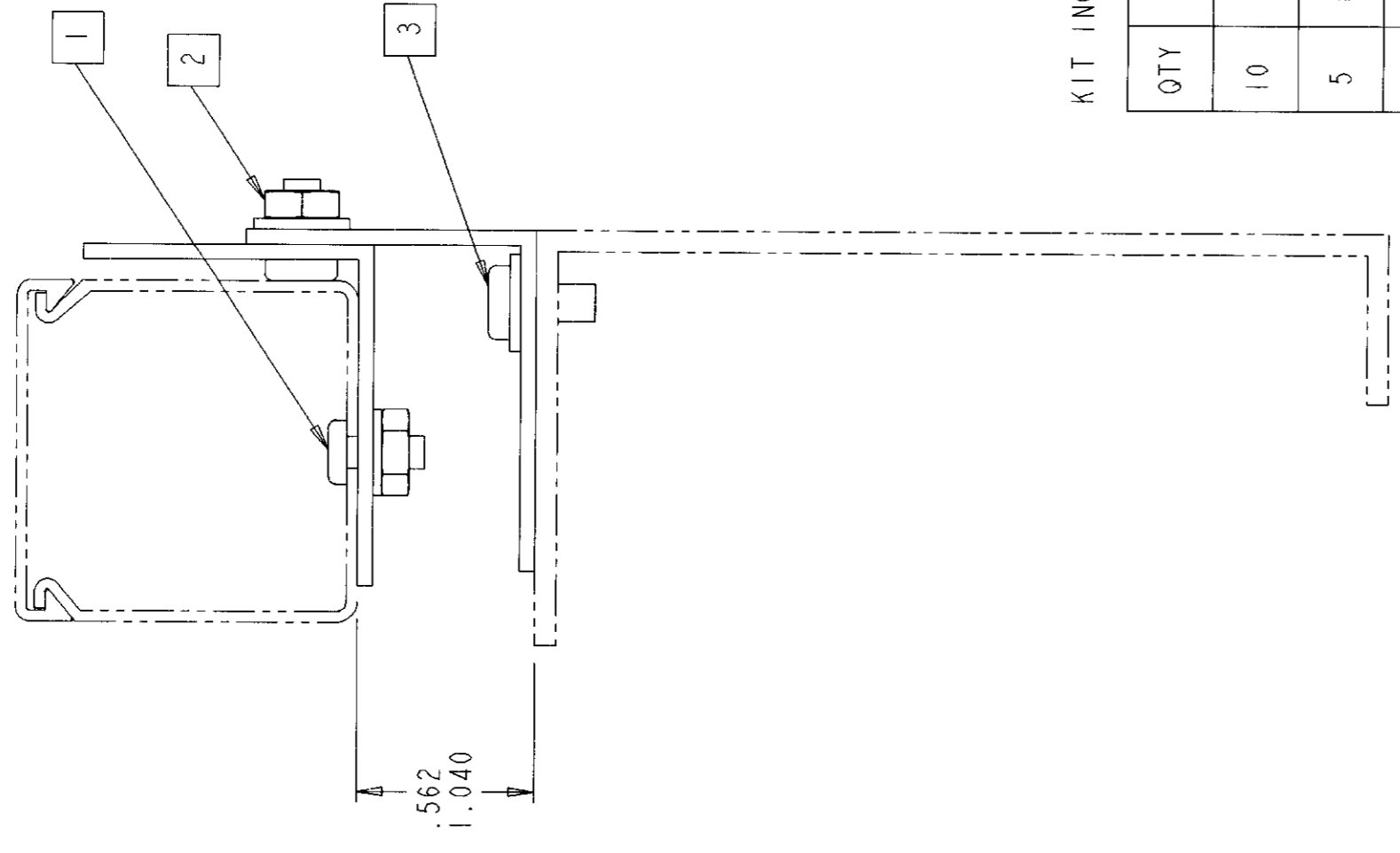


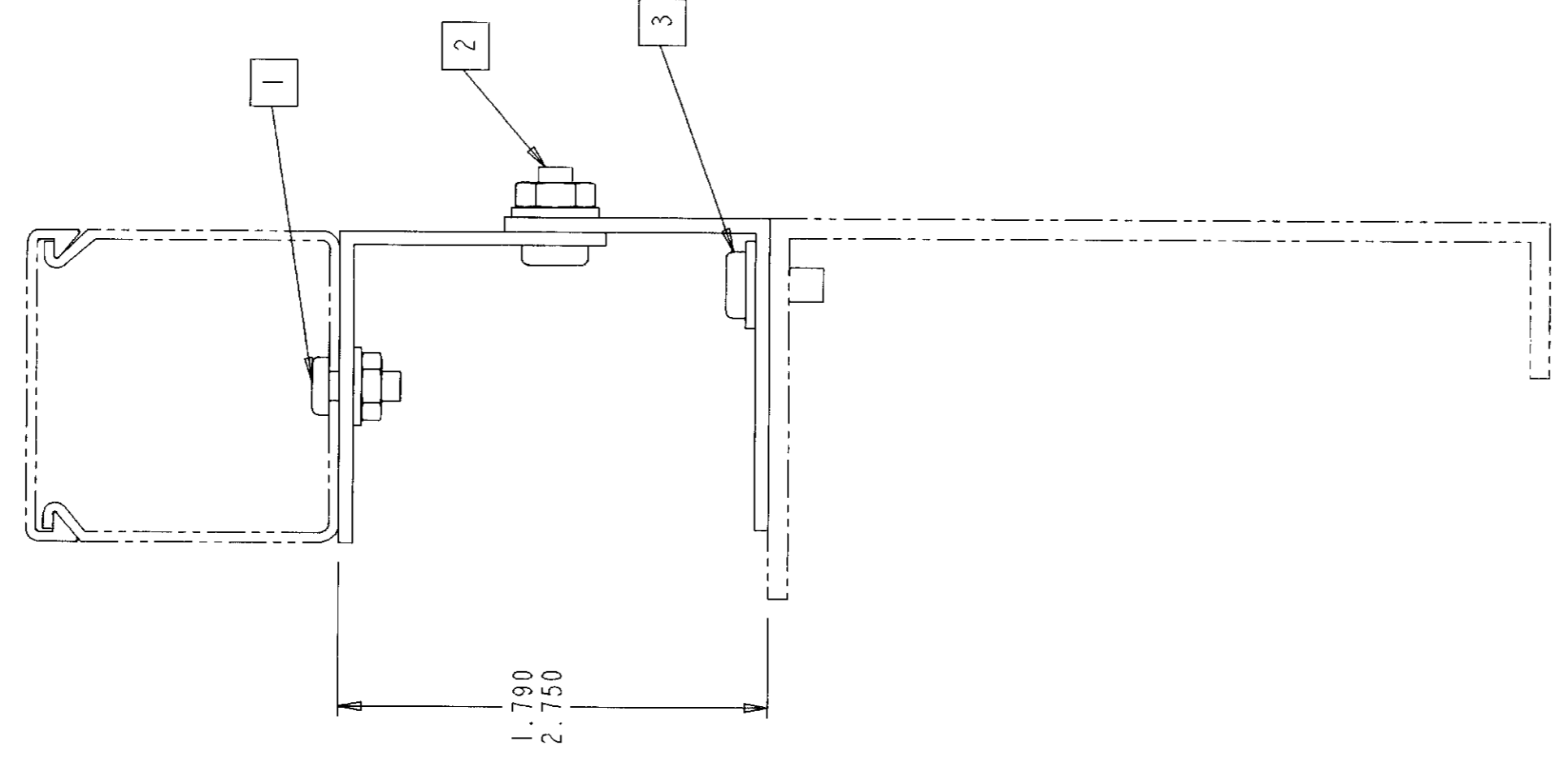
REV	ECO	DWN	DATE
A	95375	DJL	11/5/91
B	99342	MV	01-14-93

KEY

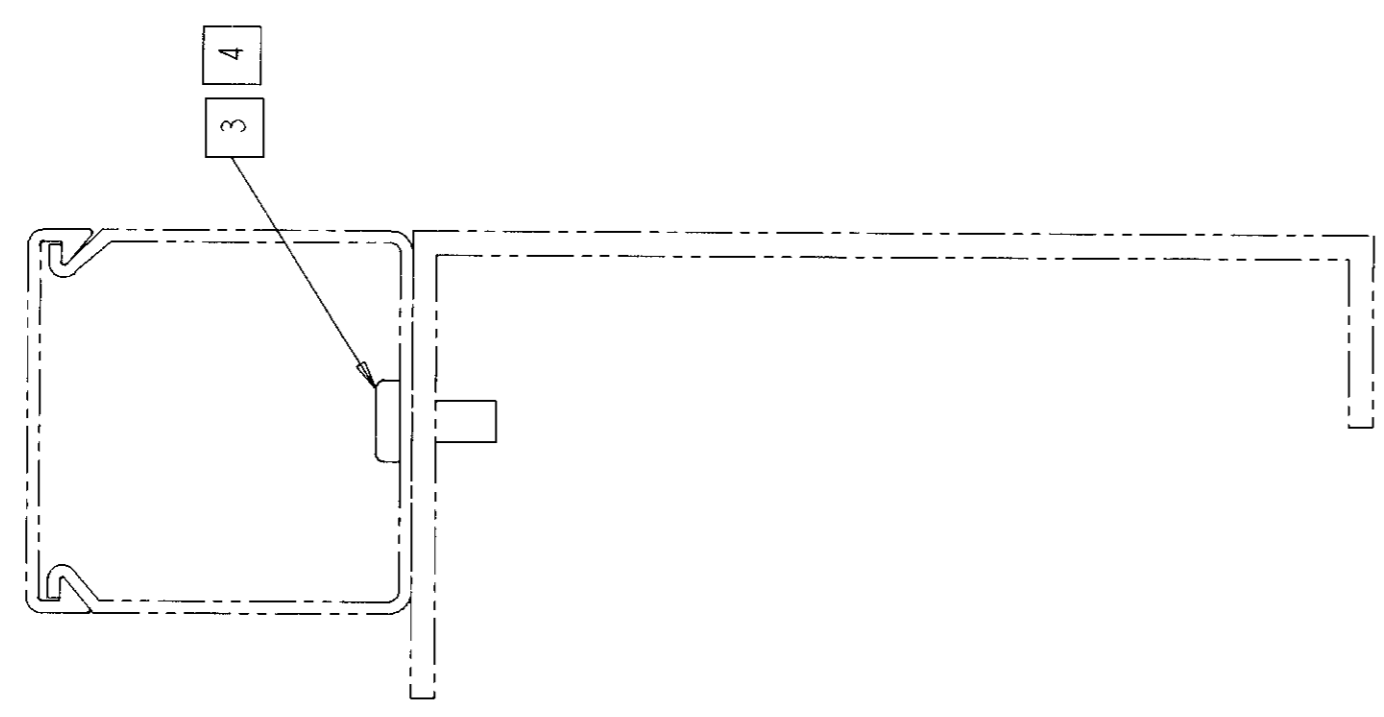
— COMPONENTS INCLUDED IN KIT
 - - - COMPONENTS NOT INCLUDED IN KIT



BRACKET ARRANGEMENT "B"



BRACKET ARRANGEMENT "A"



ARRANGEMENT "C"

KIT INCLUDES THE FOLLOWING:

QTY	PART DESCRIPTION
10	DUCT MOUNTING BRACKETS
5	12-24 X 1/2 THREAD CUTTING SCREWS
5	12-24 X 1/2 SCREWS
10	#12 FLATWASHERS
5	#12 HEX NUTS
5	#10 X 3/8 SCREWS
5	#10 FLATWASHERS
5	#10 HEX NUTS

NOTES:

- 1. #10 SCREW, NUT, AND WASHER.
- 2. #12 SCREW, NUT, AND WASHER.
- 3. #12 THREAD CUTTING SCREW AND WASHER.
- 4. DRILL MOUNTING SLOTS ON 2 X 2 VERTICAL DUCT TO .25 DIA.

ADG TELECOMMUNICATIONS

INFORMATION ON THIS DOCUMENT IS PROPRIETARY TO ADC AND SHALL NOT BE USED, COPIED, REPRODUCED OR DISCLOSED IN WHOLE OR IN PART WITHOUT WRITTEN CONSENT OF ADC. TOLERANCE UNLESS OTHERWISE SPECIFIED: .XX: .XXX: .M/A: .C: .SIZE: .DRAWING NUMBER: .REV: .

DO NOT SCALE DRAWING

ENGR: F. NAULT
 DWN: D. LOCH

SHT. 1 OF 1

CATALOG #: FGS-HWMB-C

TITLE: FIBERGUIDES EIA & WECO
 2" X 2" BRACKET KIT
 (INSTALLATION DRAWING)