



# Cable Exchange Distributed Cabling:

Untangle cable complexity, accelerate ROI

Getting the maximum output from a minimum of input—that's efficiency. It's what Cable Exchange distributed copper cabling solution is all about. Now you can connect a multitude of servers per row with a point-to-multipoint bundled cable in less than an hour.

## PROJECTED SAVINGS

**15-25%**  
in total project cost

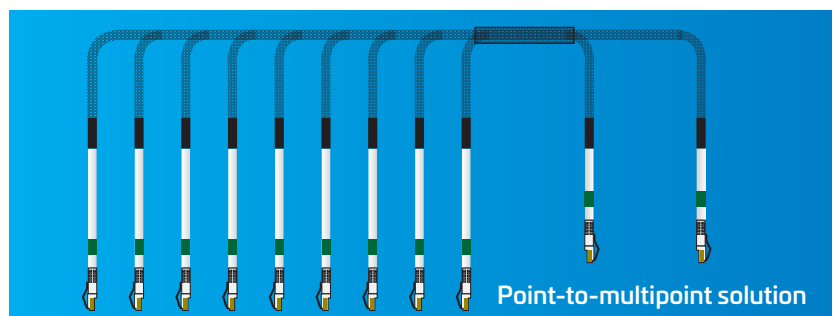
**50-75%**  
in installation time

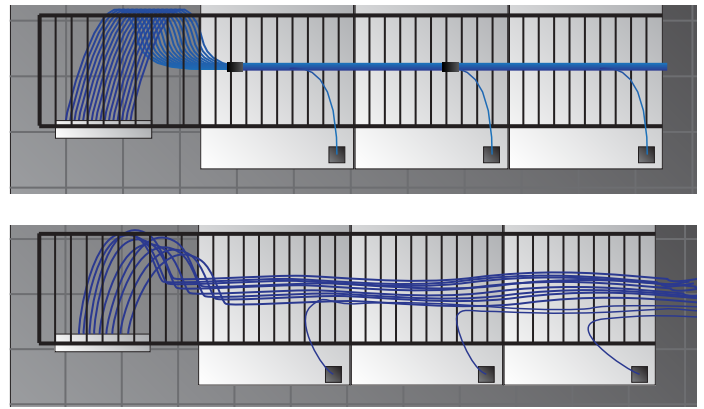
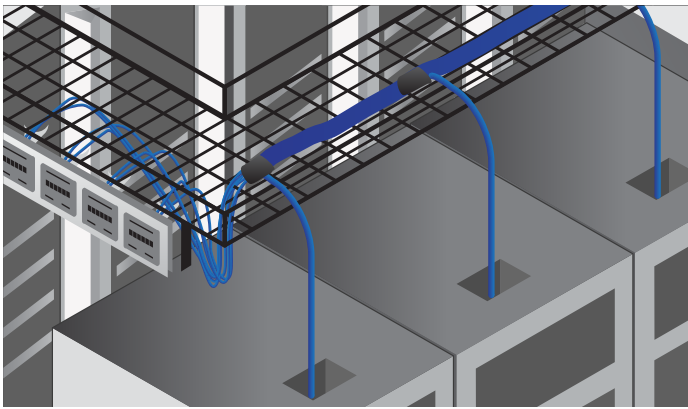
### Optimize your time and resources

The Cable Exchange distributed cabling solution is designed to help data centers better manage their server row cabling. The single bundled distribution cable contains individual cable legs (drops) located at pre-defined intervals along the cable trunk. Each drop features four pre-terminated cable pairs. Unused drops remain neatly bundled to the distribution cable.

Now, instead of running dozens of individual jumpers from the switch to each server, just connect the Cable Exchange distribution cable to the server and connect the drops as you move down the row. Work faster and smarter while eliminating the congestion in your cable trays. It's more time-efficient, space-efficient and cost-efficient!

- Reduce deployment time
- Eliminate cabling congestion
- Minimize installation errors
- Reduce inventory cost
- Decrease packaging requirements
- Lower your carbon footprint
- Maximize data center ROI





## A fully configurable, high-efficiency server row cabling solution

The Cable Exchange distributed cabling solution provides a best-fit strategy based on your number of racks, copper cabling type, color preferences and labeling requirements. All configurations can be used for top-of-rack, middle-of-row and end-of-row architectures.

### Choose your cabling type

Select from Cat 6 or Cat 6A cabling. The standard gauge is 28 AWG with a 24 AWG cable also available. Note that a 24 AWG bundle will add bulk and reduce the number of ports served.

### Select your trunk length

Cable Exchange bundled trunk cable can span 200 feet and beyond. The length of the individual cables in each leg can also be customized to minimize slack.

### Pick your connector count

Cable Exchange can be configured with as many as 12 legs and 180 individual cable drop—90 per side—all pre-terminated with standard RJ45 connectors for fast, easy installation.

### Match your identification requirements

From color-coded jacketing to labeling templates, Cable Exchange can meet your data center's cable identification standards.

## 5 easy steps to configuring a server row cabling solution



Cat 6 or Cat 6A  
and jacker color



Length of the longest  
path up to 200ft



Total number of  
ports to connect



Number of racks to  
connect = number of  
drop off points



Quantity and stagger  
for each drop of point

## Cable Exchange Assurance

The Cable Exchange distributed cabling solution delivers the performance and peace of mind today's data center network managers demand. For decades, we have set the standard for high-bandwidth data connectivity in structure copper and fiber cabling and have backed it up with industry-leading support. For more information on Cable Exchange warranty, [click here](#).

## More efficiency today, more growth tomorrow

As demands on your data center's infrastructure increase, resources are stretched thin—white space, deployment time, cabling costs, you name it. Server row connectivity is no exception. With Cable Exchange distributed cabling solution, you can regain control of your server row cabling. Untangle the complexity, free up space, accelerate deployment and keep your network growth on track.

For more information, call Monday-Friday, 5am-5pm (PST) at (800) 422-2539, or email at [CEXSales@commscope.com](mailto:CEXSales@commscope.com).

Subject to CommScope limited [product warranty](#).



[commscope.com](https://commscope.com)

Visit our website or contact your local CommScope representative for more information.

© 2023 CommScope, Inc. All rights reserved. All trademarks identified by ™ or ® are trademarks or registered trademarks in the US and may be registered in other countries. All product names, trademarks and registered trademarks are property of their respective owners. This document is for planning purposes only and is not intended to modify or supplement any specifications or warranties relating to CommScope products or services.