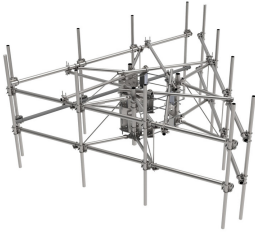


# MCG22HDX-10M-B

---



G22HDX High Capacity 3-Sector Monopole Frame with 2 7/8in OD x 10.5 ft face. Base Kit Only. No antenna pipes.

## Product Classification

<b>Product Type</b>	High capacity monopole sector frame
<b>Product Series</b>	G2

## General Specifications

<b>Mounting</b>	Monopole, 381–1270 mm (15–50 in) OD
<b>Pipe, quantity</b>	0
<b>Sectors, quantity</b>	3

## Dimensions

<b>Face Width</b>	3.2 m   10.5 ft
<b>Face Support Pipe Diameter</b>	73.025 mm   2.875 in
<b>Mounting Diameter, maximum</b>	1270 mm   50 in
<b>Mounting Diameter, minimum</b>	381 mm   15 in
<b>Stand-off Distance</b>	1,066.8 mm   42 in

## Material Specifications

<b>Material Type</b>	Hot dip galvanized steel
----------------------	--------------------------

## Mechanical Specifications

<b>Wind Rating</b>	For Specifications, please contact <a href="mailto:steelproducts@commscope.com">steelproducts@commscope.com</a> or call 800-255-1479
<b>Wind Rating Test Method</b>	TIA/EIA-222

## Packaging and Weights

<b>Included</b>	Ring mounts (2)   Sector frames (3)   Stiff arm
<b>Packaging quantity</b>	1

## Regulatory Compliance/Certifications

# MCG22HDX-10M-B

---

**Agency**

CHINA-ROHS

ROHS

UK-ROHS

**Classification**

Above maximum concentration value

Compliant/Exempted

Compliant/Exempted

**\* Footnotes****Wind Rating**

BWS—Base Wind Speed; FBC—Florida Building Code