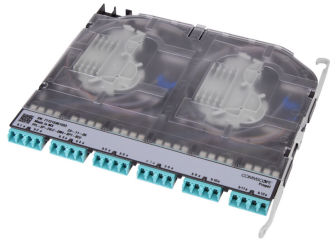


760255057 | PPL-SP-24LC-OM4-RPT-BEU



Propel Multimode Splice Cassette, 24LC with internal shutters, OM4 ribbon fiber pigtail, Method B Enhanced ULL

- Can be installed and removed from front or rear of panel
- This component requires 6 of the 12 lanes on the Propel Panel blade

Recommended for use with 24f subunit cable

Product Classification

Regional Availability	Asia Australia/New Zealand EMEA Latin America North America
Portfolio	SYSTIMAX®
Product Type	Fiber cassette with ribbon pigtail
Product Brand	Propel
Product Series	PPL

General Specifications

Color, front	Aqua
Interface, front	LC/UPC
Interface, rear	Ribbon pigtail
Polarity	Method B Enhanced (ULL)
Shuttered	Yes
Total Fibers, quantity	24

Dimensions

Height	67.31 mm 2.65 in
Width	196.012 mm 7.717 in

Optical Specifications

Fiber Mode	Multimode
Fiber Type	G.657.A2
Insertion Loss, maximum	0.15 dB

Environmental Specifications

Qualification Standards	IEC 61753-1 TIA-568.3-D
--------------------------------	---------------------------

760255057 | PPL-SP-24LC-OM4-RPT-BEU

Safety Standard UL

Packaging and Weights

Included Mass Fusion Splice Protection Sleeves

Packaging quantity 1

Included Products

FST-ACC006 – Fiber Optic Protective Splice Sleeve, 12f mass fusion, 5 pack