

# MTC3752T3



G2 Series High Capacity Three Sector Frame Kit, 12.5 ft face, includes twelve 96 in antenna pipes plus six 96 in RRU Pipes; For patents, see [www.cs-pat.com](http://www.cs-pat.com).

## Product Classification

Product Type	High capacity Tower sector frame
Ordering Note	NSTD445 Compliant

## General Specifications

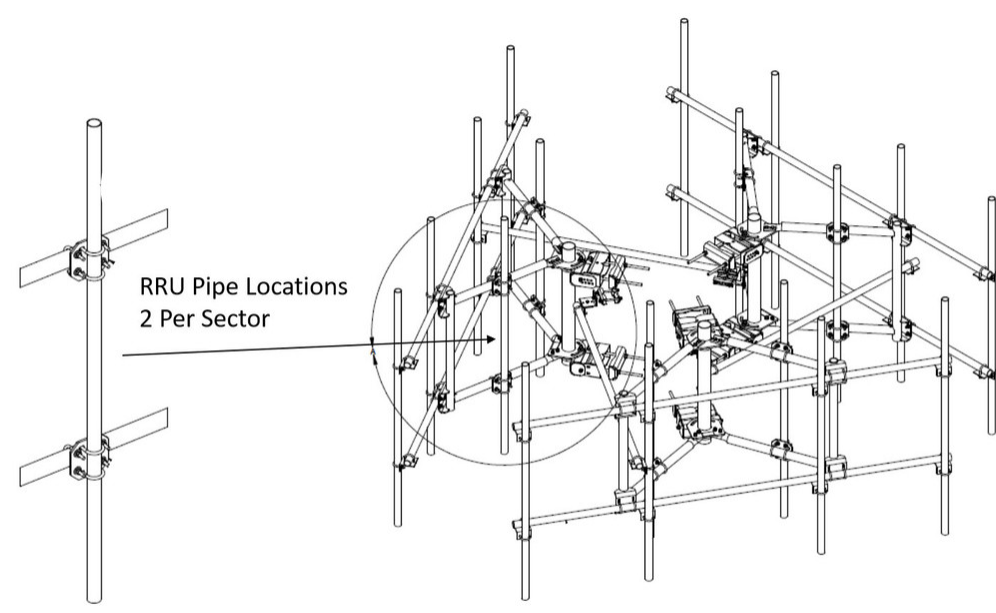
Application	4G LTE antenna/radio mount
Mounting	Angle 60°, 203.2 mm (8 in)   Straight or tapered legs up to 203.2 mm (8 in) OD
Patent Number	Patent pending
Pipe, quantity	18
Sectors, quantity	3
Tower Taper	Non-tapered   Tapered

## Dimensions

Height	2,438.4 mm   96 in
Face Width	3.81 m   12.5 ft
Width	3,810 mm   150 in
Pipe Length	2,438.4 mm   96 in
Face Support Pipe Diameter	60.325 mm   2.375 in
Mounting Diameter, maximum	218.44 mm   8.6 in
Mounting Diameter, minimum	50.8 mm   2 in
Pipe Outer Diameter	60.325 mm   2.375 in
Stand-off Distance	1,092.2 mm   43 in

## Outline Drawing

# MTC3752T3



PATENT PENDING

## Material Specifications

**Material Type** Hot dip galvanized steel

## Mechanical Specifications

**Wind Rating** For Specifications, please contact your local ANDREW representative

**Wind Rating Test Method** TIA/EIA-222-G

## Packaging and Weights

**Included** Frame | Pipe mounts | Plain end pipes (12) | RRU Pipes (6) | Stiff arm | Tower attachment

**Packaging quantity** 1

**Weight, net** 808.755 kg | 1783 lb

## Regulatory Compliance/Certifications

Agency	Classification
CHINA-ROHS	Above maximum concentration value
ISO 9001:2015	Designed, manufactured and/or distributed under this quality management system
ROHS	Compliant/Exempted
UK-ROHS	Compliant/Exempted



\* Footnotes

**Wind Rating**                      BWS—Base Wind Speed; FBC—Florida Building Code