

# PM-SL2-96

---



Universal Taper Pipe Mount Slider Bracket, 2-3/8 in OD x 96 in pipe

## Product Classification

**Product Type** Pipe mount

## General Specifications

**Mounting** Saddle mounts

**Note** One 96 in x 8 in panel antenna per pipe mount

**Pipe, quantity** 1

**Tower Taper** Tapered

## Dimensions

**Height** 2,438.4 mm | 96 in

**Width** 152.4 mm | 6 in

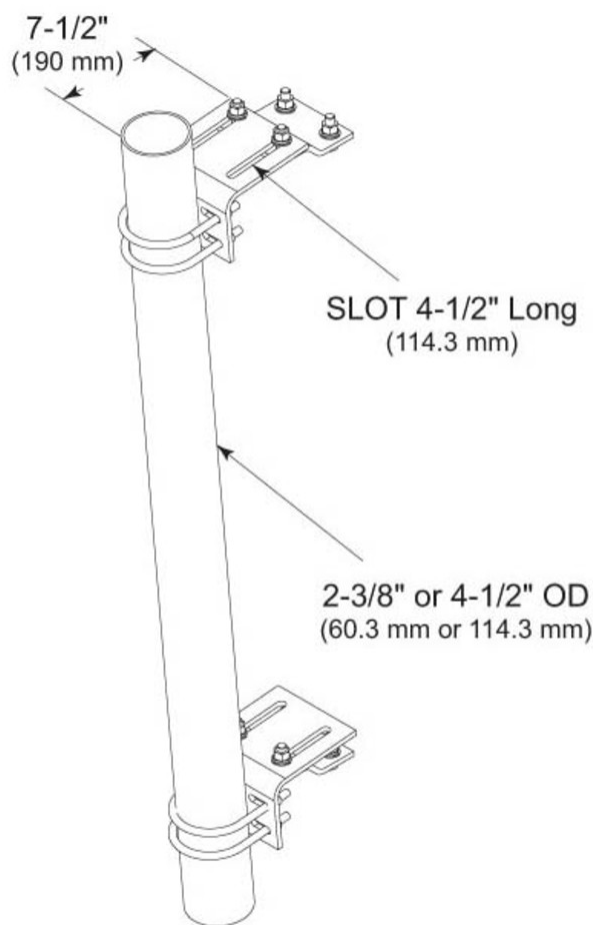
**Length** 304.8 mm | 12 in

**Pipe Length** 2,438.4 mm | 96 in

**Pipe Outer Diameter** 60.96 mm | 2.4 in

# PM-SL2-96

## Outline Drawing



## Material Specifications

**Material Type** Hot dip galvanized steel

## Mechanical Specifications

**Wind Rating** 120 mph (BWS) at 150 ft AGL

**Wind Rating Test Method** TIA/EIA-222

## Packaging and Weights

**Included** Hardware | Pipe | Sliding pipe mount brackets

**Packaging quantity** 1

# PM-SL2-96

---

**Weight, net** 28.8 kg | 63.493 lb

## Regulatory Compliance/Certifications

| Agency        | Classification                                                                 |
|---------------|--------------------------------------------------------------------------------|
| ISO 9001:2015 | Designed, manufactured and/or distributed under this quality management system |

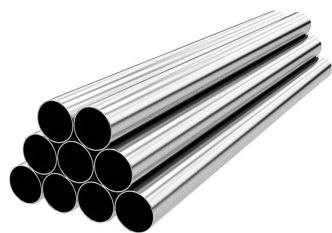
## Included Products

|           |                                                                  |
|-----------|------------------------------------------------------------------|
| MT-651-96 | – Plain End Pipe, 2-3/8 in OD x 96 in .120" A500C 46Ksi          |
| PM-SL2    | – Universal Taper Pipe Mount Slider Bracket for 2-3/8 in OD pipe |

## \* Footnotes

|                    |                                                |
|--------------------|------------------------------------------------|
| <b>Wind Rating</b> | BWS—Base Wind Speed; FBC—Florida Building Code |
|--------------------|------------------------------------------------|

# MT-651-96



Plain End Pipe, 2-3/8 in OD x 96 in .120" A500C 46Ksi

## Product Classification

**Product Type** Plain end pipe

## General Specifications

**Pipe, quantity** 1

## Dimensions

**Height** 60.96 mm | 2.4 in  
**Width** 60.96 mm | 2.4 in  
**Length** 2,438.4 mm | 96 in  
**Pipe Length** 2,438.4 mm | 96 in  
**Pipe Outer Diameter** 60.325 mm | 2.375 in  
**Material Thickness** 3.048 mm | 0.12 in

## Material Specifications

**Material Type** A500 | Hot dip galvanized steel  
**Material Grade** C  
**Material Strength** 46 KSI

## Packaging and Weights

**Included** Pipe  
**Packaging quantity** 1  
**Weight, net** 10 kg | 22.046 lb

## Regulatory Compliance/Certifications

| Agency        | Classification                                                                 |
|---------------|--------------------------------------------------------------------------------|
| CHINA-ROHS    | Above maximum concentration value                                              |
| ISO 9001:2015 | Designed, manufactured and/or distributed under this quality management system |

# MT-651-96

---

|         |                    |
|---------|--------------------|
| ROHS    | Compliant/Exempted |
| UK-ROHS | Compliant/Exempted |



# PM-SL2

---



Universal Taper Pipe Mount Slider Bracket for 2-3/8 in OD pipe

## Product Classification

**Product Type** Pipe mount

## General Specifications

**Mounting** Saddle mounts

**Note** One 96 in x 8 in panel antenna per pipe mount

**Pipe, quantity** 0

**Tower Taper** Tapered

## Dimensions

**Height** 127 mm | 5 in

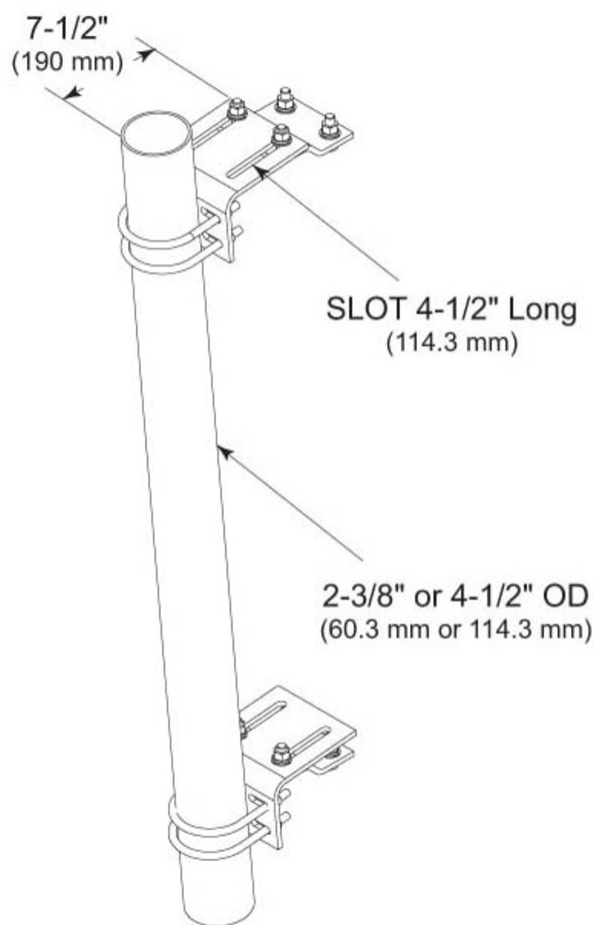
**Width** 152.4 mm | 6 in

**Length** 304.8 mm | 12 in

**Pipe Outer Diameter** 60.96 mm | 2.4 in

# PM-SL2

## Outline Drawing



## Material Specifications

**Material Type** Hot dip galvanized steel

## Mechanical Specifications

**Wind Rating** 120 mph (BWS) at 150 ft AGL

**Wind Rating Test Method** TIA/EIA-222

## Packaging and Weights

**Included** Hardware | Sliding pipe mount brackets

**Packaging quantity** 2

# PM-SL2

---

**Weight, net** 13.6 kg | 29.983 lb

## Regulatory Compliance/Certifications

| Agency        | Classification                                                                                                           |
|---------------|--------------------------------------------------------------------------------------------------------------------------|
| ISO 9001:2015 | Designed, manufactured and/or distributed under this quality management system                                           |
| REACH-SVHC    | Compliant as per SVHC revision on <a href="http://www.andrew.com/ProductCompliance">www.andrew.com/ProductCompliance</a> |
| ROHS          | Compliant                                                                                                                |
| UK-ROHS       | Compliant                                                                                                                |

## \* Footnotes

**Wind Rating** BWS—Base Wind Speed; FBC—Florida Building Code