

# PM-SU2-72



Universal Sliding Pipe Mount Kit for 2-3/8 in OD x 72 in pipe

## Product Classification

**Product Type** Pipe mount

## General Specifications

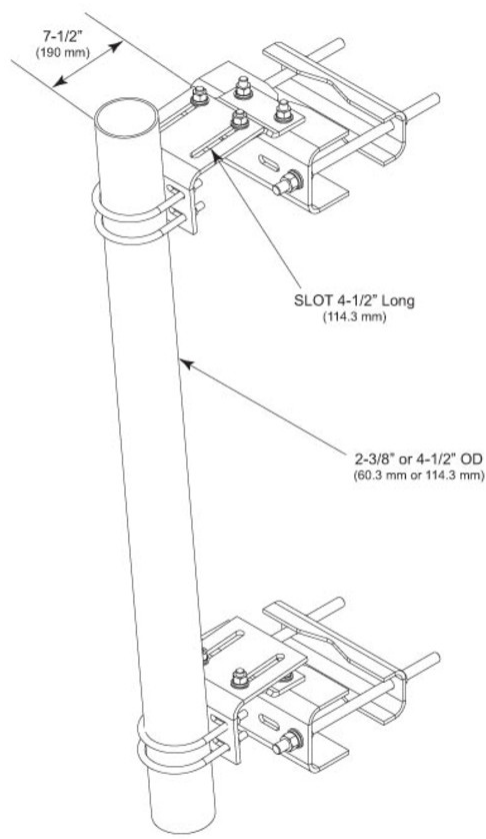
<b>Mounting</b>	Angle 60°, 203.2 mm (8 in)   Angle 90°, 152.4 mm (6 in)   Straight or tapered legs up to 203.2 mm (8 in) OD
<b>Note</b>	One 96 in x 8 in panel antenna per sector
<b>Pipe, quantity</b>	1
<b>Tower Taper</b>	Tapered

## Dimensions

<b>Height</b>	1,828.8 mm   72 in
<b>Width</b>	304.8 mm   12 in
<b>Length</b>	304.8 mm   12 in
<b>Pipe Length</b>	1,828.8 mm   72 in
<b>Mounting Diameter, maximum</b>	203.2 mm   8 in
<b>Mounting Diameter, minimum</b>	0 mm   0 in
<b>Pipe Outer Diameter</b>	60.96 mm   2.4 in

# PM-SU2-72

## Outline Drawing



## Material Specifications

**Material Type** Hot dip galvanized steel

## Mechanical Specifications

**Wind Rating** 120 mph (BWS) at 150 ft AGL

**Wind Rating Test Method** TIA/EIA-222

## Packaging and Weights

**Included** Pipe | Sliding pipe mount brackets | Universal saddle mount

**Packaging quantity** 1

# PM-SU2-72

**Weight, net** 45.8 kg | 100.972 lb

## Regulatory Compliance/Certifications

Agency	Classification
ISO 9001:2015	Designed, manufactured and/or distributed under this quality management system

## Included Products

MT-651	– Plain End Pipe, 2-3/8 in OD x 72 in .120" A500C 46Ksi
PM-SL2	– Universal Taper Pipe Mount Slider Bracket for 2-3/8 in OD pipe
SM-U2080	– Universal Saddle Mount for straight or tapered legs up to 8 in OD, 8 in angle 60°, or 6 in angle 90° (Kit of 2)

## \* Footnotes

<b>Wind Rating</b>	BWS—Base Wind Speed; FBC—Florida Building Code
--------------------	------------------------------------------------