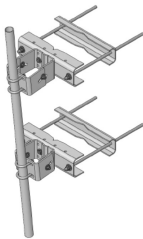


# PML-SC2-96



Large Leg Universal Open Face Pipe Mount Kit, 2-3/8 in OD x 96 in pipe

## Product Classification

**Product Type** Pipe mount

## General Specifications

|                       |  |
|-----------------------|--|
| <b>Mounting</b>       | Angle 60°, 406.4 mm (16 in)   Angle 90°, 304.8 mm (12 in)   Straight or tapered legs up to 406.4 mm (16 in) OD |
| <b>Note</b>           | One 96 in x 8 in panel antenna per sector  |
| <b>Pipe, quantity</b> | 1  |
| <b>Tower Taper</b>    | Non-tapered   Tapered  |

## Dimensions

|                                   |                    |
|-----------------------------------|--------------------|
| <b>Height</b>                     | 2,438.4 mm   96 in |
| <b>Width</b>                      | 304.8 mm   12 in   |
| <b>Length</b>                     | 304.8 mm   12 in   |
| <b>Pipe Length</b>                | 2,438.4 mm   96 in |
| <b>Mounting Diameter, maximum</b> | 406.4 mm   16 in   |
| <b>Mounting Diameter, minimum</b> | 0 mm   0 in        |
| <b>Pipe Outer Diameter</b>        | 60.96 mm   2.4 in  |
| <b>Stand-off Distance</b>         | 203.2 mm   8 in    |

## Material Specifications

**Material Type** Hot dip galvanized steel

## Mechanical Specifications

|                                |                             |
|--------------------------------|-----------------------------|
| <b>Wind Rating</b>             | 120 mph (BWS) at 150 ft AGL |
| <b>Wind Rating Test Method</b> | TIA/EIA-222                 |

## Packaging and Weights

# PML-SC2-96

---

|                    |   |
|--------------------|---|
| Included           | Pipe   Sliding pipe mount brackets   Universal saddle mount |
| Packaging quantity | 1   |
| Weight, net        | 81.7 kg   180.117 lb  |

## Regulatory Compliance/Certifications

|               |  |
|---------------|--|
| Agency        | Classification   |
| ISO 9001:2015 | Designed, manufactured and/or distributed under this quality management system |

## \* Footnotes

|             |  |
|-------------|--|
| Wind Rating | BWS—Base Wind Speed; FBC—Florida Building Code |
|-------------|--|