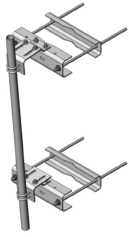


PML-SU2-96



Large Leg Universal Sliding Pipe Mount Kit, 2-3/8 in OD x 96 in pipe

Product Classification

Product Type Pipe mount

General Specifications

Mounting Angle 60°, 406.4 mm (16 in) | Angle 90°, 304.8 mm (12 in) | Straight or tapered legs up to 406.4 mm (16 in) OD

Note One 96 in x 8 in panel antenna per sector

Pipe, quantity 1

Tower Taper Non-tapered | Tapered

Dimensions

Height 2,438.4 mm | 96 in

Width 304.8 mm | 12 in

Length 304.8 mm | 12 in

Pipe Length 2,438.4 mm | 96 in

Mounting Diameter, maximum 406.4 mm | 16 in

Mounting Diameter, minimum 0 mm | 0 in

Pipe Outer Diameter 60.96 mm | 2.4 in

Stand-off Distance 203.2 mm | 8 in

Material Specifications

Material Type Hot dip galvanized steel

Mechanical Specifications

Wind Rating 120 mph (BWS) at 150 ft AGL

Wind Rating Test Method TIA/EIA-222

Packaging and Weights

PML-SU2-96

Included	Pipe Sliding pipe mount brackets Universal saddle mount
Packaging quantity	1
Weight, net	51.7 kg 113.979 lb

Regulatory Compliance/Certifications

Agency	Classification
ISO 9001:2015	Designed, manufactured and/or distributed under this quality management system

* Footnotes

Wind Rating	BWS—Base Wind Speed; FBC—Florida Building Code
--------------------	--