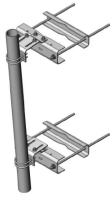


# PML-SU4-63

---



## Large Leg Universal Sliding Pipe Mount Kit, 4-1/2 in OD x 63 in pipe

### Product Classification

**Product Type** Pipe mount

### General Specifications

**Mounting** Angle 60°, 406.4 mm (16 in) | Angle 90°, 304.8 mm (12 in) | Straight or tapered legs up to 406.4 mm (16 in) OD

**Note** One 8 ft microwave antenna with stiff arm

**Pipe, quantity** 1

**Tower Taper** Non-tapered | Tapered

### Dimensions

**Height** 1,600.2 mm | 63 in

**Width** 304.8 mm | 12 in

**Length** 304.8 mm | 12 in

**Pipe Length** 1,600.2 mm | 63 in

**Mounting Diameter, maximum** 406.4 mm | 16 in

**Mounting Diameter, minimum** 0 mm | 0 in

**Pipe Outer Diameter** 114.3 mm | 4.5 in

**Stand-off Distance** 203.2 mm | 8 in

### Material Specifications

**Material Type** Hot dip galvanized steel

### Mechanical Specifications

**Wind Rating** 120 mph (BWS) at 150 ft AGL

**Wind Rating Test Method** TIA/EIA-222

# PML-SU4-63

---

## Packaging and Weights

|                           |                                                             |
|---------------------------|-------------------------------------------------------------|
| <b>Included</b>           | Pipe   Sliding pipe mount brackets   Universal saddle mount |
| <b>Packaging quantity</b> | 1                                                           |
| <b>Weight, net</b>        | 62.6 kg   138.009 lb                                        |

## Regulatory Compliance/Certifications

| <b>Agency</b> | <b>Classification</b>                                                          |
|---------------|--------------------------------------------------------------------------------|
| ISO 9001:2015 | Designed, manufactured and/or distributed under this quality management system |

## \* Footnotes

|                    |                                                |
|--------------------|------------------------------------------------|
| <b>Wind Rating</b> | BWS—Base Wind Speed; FBC—Florida Building Code |
|--------------------|------------------------------------------------|