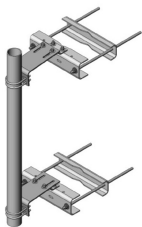


PML-SU4L-63



Large Leg Universal Adjustable Sliding Pipe Mount Kit, 4-1/2 in OD x 63 in pipe, 6–14 in stand-off

Product Classification

Product Type Pipe mount

General Specifications

Mounting	Angle 60°, 406.4 mm (16 in) Angle 90°, 304.8 mm (12 in) Straight or tapered legs up to 406.4 mm (16 in) OD
Note	One 8 ft microwave antenna with stiff arm
Pipe, quantity	1
Tower Taper	Non-tapered Tapered

Dimensions

Height	1,600.2 mm 63 in
Width	304.8 mm 12 in
Length	304.8 mm 12 in
Pipe Length	1,600.2 mm 63 in
Mounting Diameter, maximum	406.4 mm 16 in
Mounting Diameter, minimum	0 mm 0 in
Pipe Outer Diameter	114.3 mm 4.5 in
Stand-off Distance	355.6 mm 14 in
Stand-off Distance, adjustable	6–14 in 15.2–35.6 cm

Material Specifications

Material Type Hot dip galvanized steel

Mechanical Specifications

Wind Rating	120 mph (BWS) at 150 ft AGL
Wind Rating Test Method	TIA/EIA-222

PML-SU4L-63

Packaging and Weights

Included	Pipe Sliding pipe mount brackets Universal saddle mount
Packaging quantity	1
Weight, net	65.8 kg 145.064 lb

Regulatory Compliance/Certifications

Agency	Classification
ISO 9001:2015	Designed, manufactured and/or distributed under this quality management system

* Footnotes

Wind Rating	BWS—Base Wind Speed; FBC—Florida Building Code
-------------	--