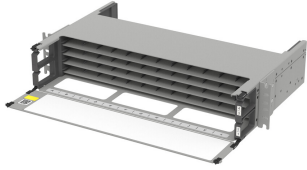


760254908 | PPL-2U-HD-FX-OPEN



Propel 2RU fixed tray open fiber panel, accepts Propel components, providing up to 96 duplex LC ports, 96 MPO ports or 192 SN ports (384f)

- Any size Propel component can be used in each panel or blade
- Components can be installed and removed from front or rear of panel
- Supports 8f, 12f, 16f and 24f applications while maintaining full panel density

Product Classification

Regional Availability	Asia Australia/New Zealand EMEA Latin America North America
Portfolio	SYSTIMAX®
Product Type	Fiber patch panel
Product Brand	Propel
Product Series	PPL

General Specifications

Color	Gray
Interface, front	Unloaded
Rack Type	EIA 19 in
Rack Units	2
Shelf Movement	Fixed
Total Ports, quantity	0

Dimensions

Height	88 mm 3.465 in
Width	483 mm 19.016 in
Depth	293 mm 11.535 in

Port Configuration

Panel size	8-fiber components	12-fiber components	16-fiber components	24-fiber components
1RU	up to 6 per blade	up to 4 per blade	up to 3 per blade	up to 2 per blade
2RU	up to 6 per blade	up to 4 per blade	up to 3 per blade	up to 2 per blade
4RU	up to 6 per blade	up to 4 per blade	up to 3 per blade	up to 2 per blade
Each blade has 12 lanes				
	Requires 2 lanes	Requires 3 lanes	Requires 4 lanes	Requires 6 lanes

Material Specifications

Material Type Aluminum | Steel

Environmental Specifications

Safety Standard c-UL-us

Packaging and Weights

Packaging quantity 1