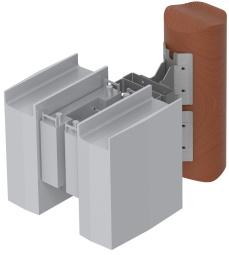


# MTC3326DA2W

---



Dual Back-to-back RRU Side Pole Mount for up to 10" OD Pole

## Product Classification

**Product Type** Wood pole mount

## General Specifications

**Mounting** Wood pole

## Dimensions

**Height** 500.38 mm | 19.7 in

**Width** 236.22 mm | 9.3 in

**Length** 462.28 mm | 18.2 in

**Mounting Diameter, maximum** 254 mm | 10 in

## Material Specifications

**Material Type** Hot dip galvanized steel

## Mechanical Specifications

**Wind Rating** For Specifications, please contact [steelproducts@commscope.com](mailto:steelproducts@commscope.com) or call 800-255-1479

## Packaging and Weights

**Included** Attachment hardware | Mount

**Packaging quantity** 1

**Weight, net** 21.4 kg | 47.179 lb

## \* Footnotes

**Wind Rating** BWS—Base Wind Speed; FBC—Florida Building Code