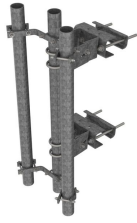


# RR-DPM

---



## Universal Open Pipe Mount Kit for straight or tapered legs

### Product Classification

**Product Type** Pipe mount | Remote radio head unit mount

### General Specifications

**Mounting** Angle 60°, 203.2 mm (8 in) | Angle 90°, 152.4 mm (6 in) | Straight or tapered legs up to 203.2 mm (8 in) OD

**Pipe, quantity** 1

**Tower Taper** Tapered

### Dimensions

**Height** 1524 mm | 60 in

**Width** 457.2 mm | 18 in

**Length** 457.2 mm | 18 in

**Pipe Length** 1524 mm | 60 in

**Mounting Diameter, maximum** 203.2 mm | 8 in

**Mounting Diameter, minimum** 0 mm | 0 in

**Pipe Outer Diameter** 88.9 mm | 3.5 in

### Material Specifications

**Material Type** Hot dip galvanized steel

### Mechanical Specifications

**Wind Rating** 120 mph (BWS) at 100 ft AGL

**Wind Rating Test Method** TIA/EIA-222

### Packaging and Weights

# RR-DPM

---

<b>Included</b>	Brackets   Hardware   Pipe
<b>Packaging quantity</b>	1
<b>Weight, net</b>	109.2 kg   240.745 lb

## Regulatory Compliance/Certifications

<b>Agency</b>	<b>Classification</b>
CHINA-ROHS	Above maximum concentration value
ROHS	Compliant/Exempted
UK-ROHS	Compliant/Exempted



## \* Footnotes

<b>Wind Rating</b>	BWS—Base Wind Speed; FBC—Florida Building Code
--------------------	--