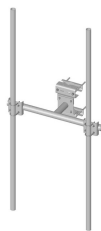


SF-DPM3-126



Co-location Dual Pipe Mount Kit; includes (2) 2-7/8 in OD x 126 in pipes

Product Classification

Product Type Co-location dual pipe mount kit

General Specifications

Mounting	Angle 60°, 203.2 mm (8 in) Angle 90°, 152.4 mm (6 in) Straight or tapered legs up to 203.2 mm (8 in) OD
Note	Two 72 in x 8 in panel antenna per sector
Pipe, quantity	2
Tower Taper	Non-tapered Tapered

Dimensions

Height	3,200.4 mm 126 in
Face Width	1.463 m 4.8 ft
Width	1,447.8 mm 57 in
Length	0.396 m 1.3 ft
Pipe Length	3,200.4 mm 126 in
Face Support Pipe Diameter	88.9 mm 3.5 in
Mounting Diameter, maximum	203.2 mm 8 in
Mounting Diameter, minimum	0 mm 0 in
Pipe Outer Diameter	73.66 mm 2.9 in
Stand-off Distance	391.16 mm 15.4 in

Material Specifications

Material Type Hot dip galvanized steel

Mechanical Specifications

Wind Rating	120 mph (BWS) at 150 ft AGL 140 mph (3-second gust) at 150 ft AGL using Exposure D per FBC
Wind Rating Test Method	TIA/EIA-222

SF-DPM3-126

Packaging and Weights

Included	Clamps Frame Pipe mounts Pipes Saddle mounts
Packaging quantity	1
Weight, net	152.2 kg 335.543 lb

Regulatory Compliance/Certifications

Agency	Classification
ISO 9001:2015	Designed, manufactured and/or distributed under this quality management system

* Footnotes

Wind Rating	BWS—Base Wind Speed; FBC—Florida Building Code
-------------	--