

SFG22-10-4-126



G22 High Capacity Sector Frame, 10.5 ft face, includes four 126 in pipes;  
For patents, see [www.cs-pat.com](http://www.cs-pat.com).

**OBSOLETE**

This product was discontinued on: March 22, 2023

Replaced By:

SFG22HD-12-4-126

G22HD High Capacity Sector Frame with 2 7/8in OD x 12.5ft face. Includes four 2 3/8in OD x 126in antenna pipes.

## Product Classification

### Product Type

### High capacity Tower sector frame

## General Specifications

## Application

4G LTE antenna/radio mount

## Mounting

Angle 60°, 203.2 mm (8 in) | Straight or tapered legs up to 203.2 mm (8 in) OD

**Patent Number**

Patent pending

### Pipe, quantity

4

## Tower Taper

Non-tapered | Tapered

## Dimensions

### Height

3,200.4 mm | 126 in

### Face Width

3.2 m | 10.5 ft

### Width

3,200.4 mm | 126 in

### Pipe Length

3,200.4 mm | 126 in

### Face Support Pipe Diameter

60.325 mm | 2.375 in

**Mounting Diameter, maximum**

218.44 mm | 8.6 in

**Mounting Diameter, minimum**

38.1 mm | 1.5 in

### Pipe Outer Diameter

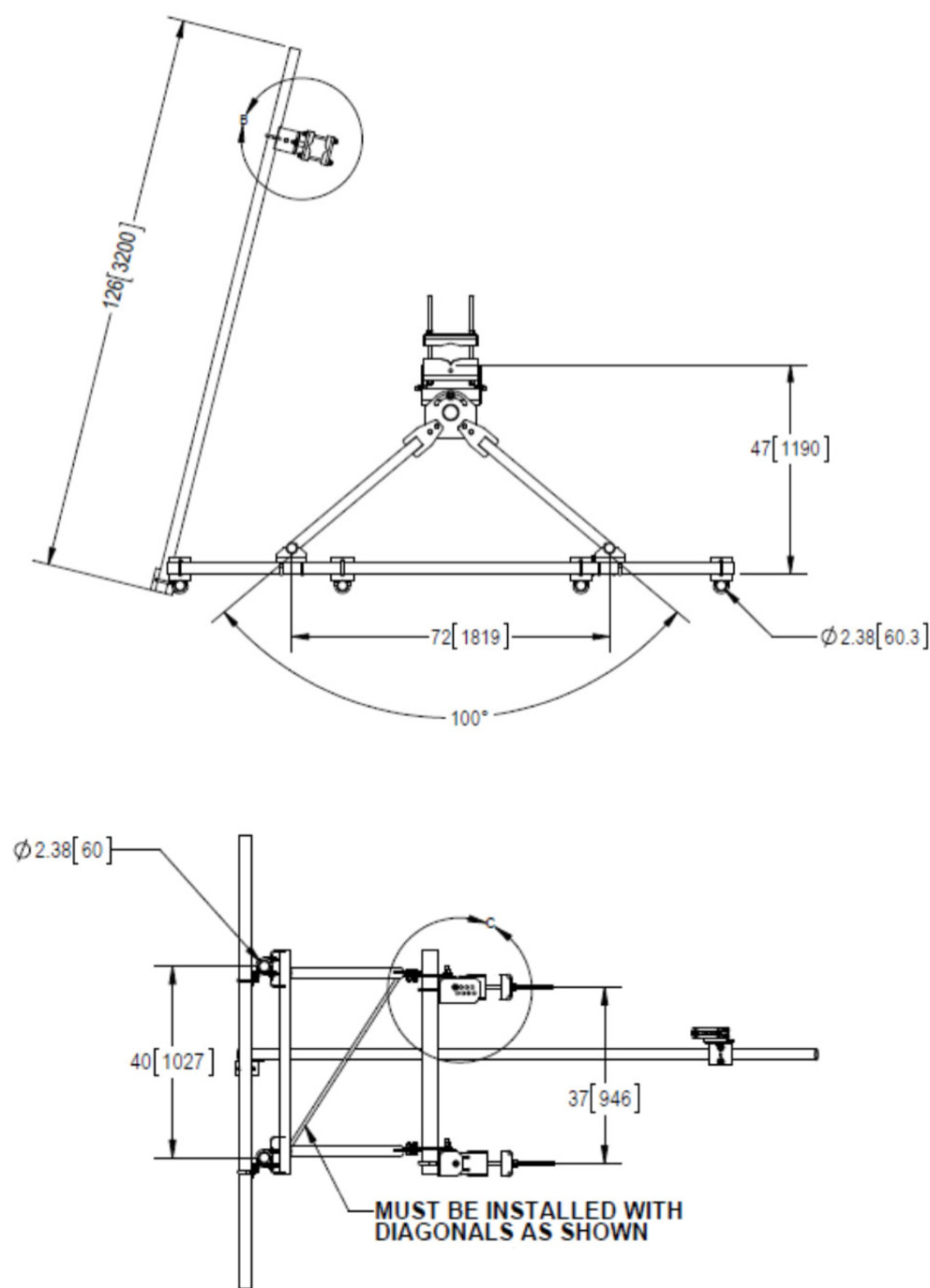
60.325 mm | 2.375 in

### Stand-off Distance

1,193.8 mm | 47 in

# SFG22-10-4-126

## Outline Drawing



## Material Specifications

### Material Type

Hot dip galvanized steel

Mechanical Specifications

Load Capacity	With additional stiff arm at 300 ft AGL: 600 lb per pipe w/out ice / 2000 lb per pipe including ice
Wind Rating	For Specifications, please contact your local ANDREW representative
Wind Rating Test Method	TIA/EIA-222-G
Wind Rating with Additional Stiff Arm	300 ft AGL: 120 mph (BWS) without ice /60 mph with ice

Packaging and Weights

Included	Frame   Pipe mounts   Plain end pipes (4)   Stiff arm   Tower attachment
Packaging quantity	1
Weight, net	240.495 kg   530.2 lb

Regulatory Compliance/Certifications

Agency	Classification
CHINA-ROHS	Above maximum concentration value
ISO 9001:2015	Designed, manufactured and/or distributed under this quality management system
ROHS	Compliant/Exempted
UK-ROHS	Compliant/Exempted



\* Footnotes

Wind Rating	BWS—Base Wind Speed; FBC—Florida Building Code
Wind Rating with Additional Stiff Arm	BWS—Base Wind Speed; FBC—Florida Building Code