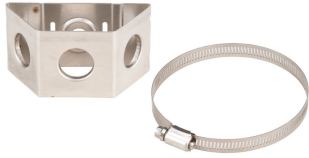


# STS3-23

---

## Three-way Snap-in Stand-off Adapter Kit for 2–3 in round members



### Product Classification

<b>Product Type</b>	Adapter
<b>Ordering Note</b>	CommScope® standard product in the United States and Canada

### General Specifications

<b>Adapter Type</b>	Stand-off adapter
<b>Mounting</b>	3/4 in through hole

### Dimensions

<b>Outside Width</b>	1,012.444 mm   39.86 in
<b>Outside Length</b>	1,975.104 mm   77.76 in
<b>Compatible Diameter, maximum</b>	76.2 mm   3 in
<b>Compatible Diameter, minimum</b>	50.8 mm   2 in
<b>Material Thickness</b>	2.591 mm   0.102 in

### Material Specifications

<b>Material Type</b>	Stainless steel
----------------------	-----------------

### Mechanical Specifications

<b>Maximum Loading</b>	Double stack, 1-5/8 in cable
------------------------	------------------------------

### Packaging and Weights

<b>Height, packed</b>	12 cm   4.724 in
<b>Width, packed</b>	11 cm   4.331 in
<b>Length, packed</b>	1 cm   0.394 in

# STS3-23

---

<b>Packaging quantity</b>	10
<b>Weight, gross</b>	0.58 kg   1.279 lb

## Regulatory Compliance/Certifications

<b>Agency</b>	<b>Classification</b>
CHINA-ROHS	Below maximum concentration value
ISO 9001:2015	Designed, manufactured and/or distributed under this quality management system
REACH-SVHC	Compliant as per SVHC revision on <a href="http://www.commscope.com/ProductCompliance">www.commscope.com/ProductCompliance</a>
ROHS	Compliant
UK-ROHS	Compliant



## Included Products

- 31670-2 – Round Member Adapter for 2–3 in round members
- SA-38 – Three-way Snap-in Stand-off Adapter
- TTS3-153 – Three-way Stand-off Adapter Kit for 1.5–3 in round members, includes UAAI insert
- TTS3-34 – Three-way Stand-off Adapter Kit for 3–4 in round members, includes UAAI insert
- TTS3-45 – Three-way Stand-off Adapter Kit for 4–5 in round members, includes UAAI insert
- TTS3-56 – Three-way Stand-off Adapter Kit for 5–6 in round members, includes UAAI insert
- TTS3-7515 – Three-way Stand-off Adapter for 0.75–1.5 in round members, includes UAAI insert