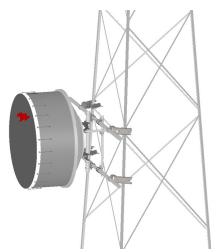


TF-M3-14



Tower Face Mount with dual 14 ft x 3-1/2 in OD face supports, includes pipe

Product Classification

Product Type Tower face mount

General Specifications

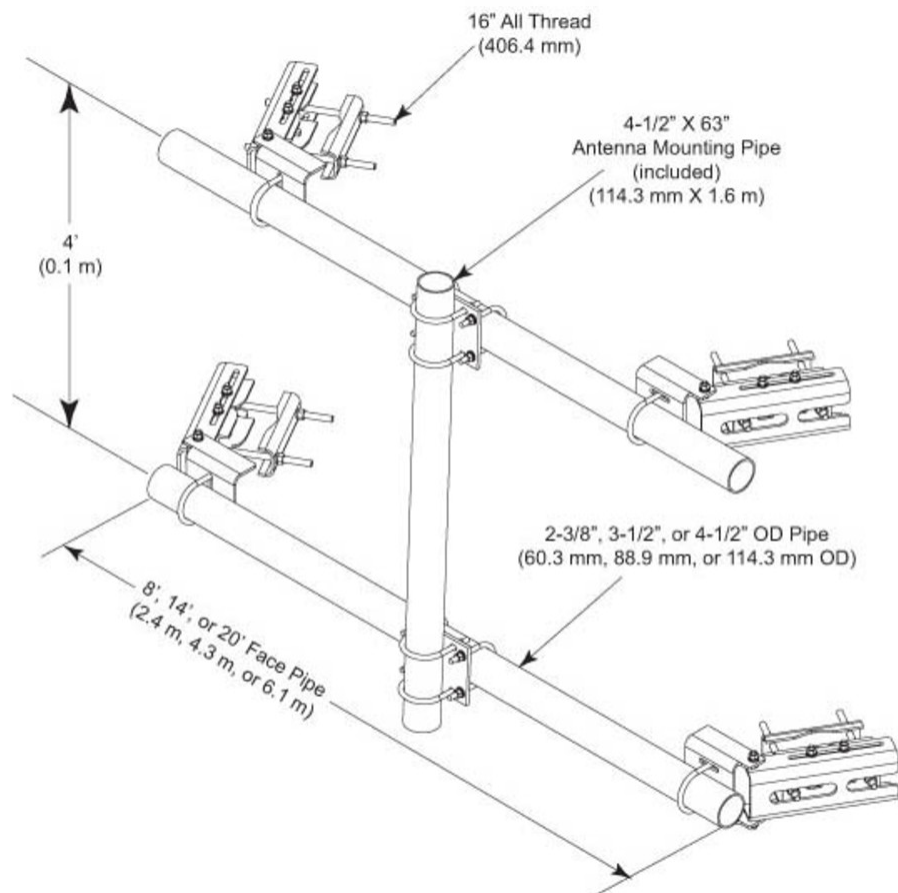
Mounting	Angle 60°, 203.2 mm (8 in) Angle 90°, 152.4 mm (6 in) Straight or tapered legs up to 203.2 mm (8 in) OD
Note	Effective Projected Area (EPA) calculated using horizontal booms, vertical pipe mount, and mounting brackets.
Pipe, quantity	1
Tower Taper	Non-tapered Tapered

Dimensions

Height	1,600.2 mm 63 in
Face Width	4.267 m 14 ft
Width	4,267.2 mm 168 in
Length	304.8 mm 12 in
Pipe Length	1,600.2 mm 63 in
Face Support Pipe Diameter	114.3 mm 4.5 in
Pipe Outer Diameter	114.3 mm 4.5 in

TF-M3-14

Outline Drawing



Material Specifications

Material Type Hot dip galvanized steel

Packaging and Weights

Included Crossover plates | Pipes | Saddle mounts

Packaging quantity 1

Weight, net 294.835 kg | 650 lb

Regulatory Compliance/Certifications

Agency	Classification
--------	----------------

TF-M3-14

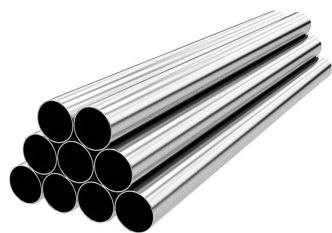
CHINA-ROHS	Above maximum concentration value
ISO 9001:2015	Designed, manufactured and/or distributed under this quality management system
ROHS	Compliant/Exempted
UK-ROHS	Compliant/Exempted



Included Products

MT-547-174	- Plain End Pipe, 3-1/2 in OD x 174 in x .165" A500C 46Ksi
MT-653-63	- Plain End Pipe, 4-1/2 in OD x 63 in x .237" A500C 46Ksi
XP-3040	- Crossover Plate, joins 3-1/2 in to 4-1/2 in OD round members

MT-547-174



Plain End Pipe, 3-1/2 in OD x 174 in x .165" A500C 46Ksi

Product Classification

Product Type Plain end pipe

General Specifications

Pipe, quantity 1

Dimensions

Height 88.9 mm | 3.5 in
Width 88.9 mm | 3.5 in
Length 4,419.6 mm | 174 in
Pipe Length 4,419.6 mm | 174 in
Pipe Outer Diameter 88.9 mm | 3.5 in
Material Thickness 4.191 mm | 0.165 in

Material Specifications

Material Type A500 | Hot dip galvanized steel
Material Grade C
Material Strength 46 KSI

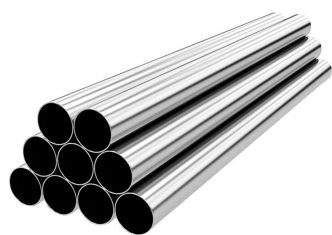
Packaging and Weights

Included Pipe
Packaging quantity 1
Weight, net 38 kg | 83.776 lb

Regulatory Compliance/Certifications

Agency	Classification
ISO 9001:2015	Designed, manufactured and/or distributed under this quality management system

MT-653-63



Plain End Pipe, 4-1/2 in OD x 63 in x .237" A500C 46Ksi

Product Classification

Product Type Plain end pipe

General Specifications

Pipe, quantity 1

Dimensions

Height 114.3 mm | 4.5 in
Width 114.3 mm | 4.5 in
Length 1,600.2 mm | 63 in
Pipe Length 1,600.2 mm | 63 in
Pipe Outer Diameter 114.3 mm | 4.5 in
Material Thickness 6.02 mm | 0.237 in

Material Specifications

Material Type A500 | Hot dip galvanized steel
Material Grade C
Material Strength 46 KSI

Packaging and Weights

Included Pipe
Packaging quantity 1
Weight, net 25.9 kg | 57.1 lb

Regulatory Compliance/Certifications

Agency	Classification
ISO 9001:2015	Designed, manufactured and/or distributed under this quality management system

XP-3040



Crossover Plate, joins 3-1/2 in to 4-1/2 in OD round members

Product Classification

Product Type Clamp plate

General Specifications

Mounting Crossover plate

Dimensions

Mounting Diameter, maximum 114.3 mm | 4.5 in

Mounting Diameter, minimum 88.9 mm | 3.5 in

Material Thickness 9.525 mm | 0.375 in

Material Specifications

Material Type Hot dip galvanized steel

Packaging and Weights

Included Plates | U-bolts

Packaging quantity 1

Regulatory Compliance/Certifications

Agency	Classification
ISO 9001:2015	Designed, manufactured and/or distributed under this quality management system