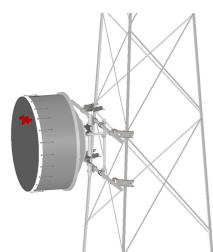


TF-M3-14



Tower Face Mount with dual 14 ft x 3-1/2 in OD face supports, includes pipe

Product Classification

Product Type Tower face mount

General Specifications

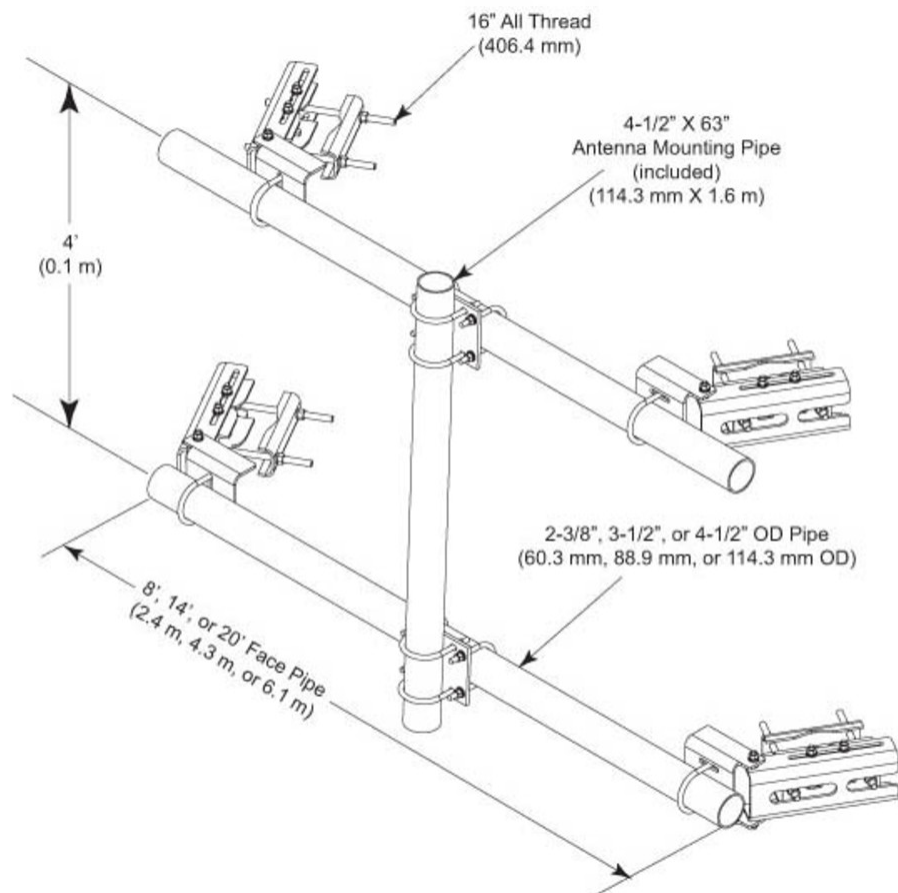
Mounting	Angle 60°, 203.2 mm (8 in) Angle 90°, 152.4 mm (6 in) Straight or tapered legs up to 203.2 mm (8 in) OD
Note	Effective Projected Area (EPA) calculated using horizontal booms, vertical pipe mount, and mounting brackets.
Pipe, quantity	1
Tower Taper	Non-tapered Tapered

Dimensions

Height	1,600.2 mm 63 in
Face Width	4.267 m 14 ft
Width	4,267.2 mm 168 in
Length	304.8 mm 12 in
Pipe Length	1,600.2 mm 63 in
Face Support Pipe Diameter	114.3 mm 4.5 in
Pipe Outer Diameter	114.3 mm 4.5 in

TF-M3-14

Outline Drawing



Material Specifications

Material Type	Hot dip galvanized steel
----------------------	--------------------------

Packaging and Weights

Included	Crossover plates Pipes Saddle mounts
Packaging quantity	1
Weight, net	294.835 kg 650 lb

Regulatory Compliance/Certifications

Agency	Classification
---------------	-----------------------

TF-M3-14

CHINA-ROHS	Above maximum concentration value
ISO 9001:2015	Designed, manufactured and/or distributed under this quality management system
ROHS	Compliant/Exempted
UK-ROHS	Compliant/Exempted



Included Products

MT-547-174	- Plain End Pipe, 3-1/2 in OD x 174 in x .165" A500C 46Ksi
MT-653-63	- Plain End Pipe, 4-1/2 in OD x 63 in x .237" A500C 46Ksi
XP-3040	- Crossover Plate, joins 3-1/2 in to 4-1/2 in OD round members