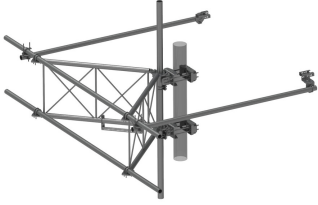


# SFG23RHDXL-11-B

---



G23RHDXL PIM OPTIMIZED SPACING High Capacity Sector Frame with extended 10' Spine for RRU Mounting & extended frame for sites requiring increased sector to sector antenna spacing. 2 7/8in OD x 11ft face. Antenna pipes sold separately.

## Product Classification

|                       |                                  |
|-----------------------|----------------------------------|
| <b>Product Type</b>   | High capacity Tower sector frame |
| <b>Product Brand</b>  | PIM-guard                        |
| <b>Product Series</b> | G2                               |

## General Specifications

|                          |  |
|--------------------------|--|
| <b>Mounting</b>          | Angle 60°, 203.2 mm (8 in)   Straight or tapered legs up to 203.2 mm (8 in) OD |
| <b>Patent Number</b>     | For patents see: <a href="http://www.cs-pat.com">www.cs-pat.com</a>            |
| <b>Pipe, quantity</b>    | 0  |
| <b>Sectors, quantity</b> | 1  |
| <b>Tower Taper</b>       | Non-tapered   Tapered  |

## Dimensions

|                                   |                      |
|-----------------------------------|----------------------|
| <b>Height</b>                     | 838.2 mm   33 in     |
| <b>Face Width</b>                 | 3.353 m   11 ft      |
| <b>Width</b>                      | 3,352.8 mm   132 in  |
| <b>Face Support Pipe Diameter</b> | 73.025 mm   2.875 in |
| <b>Mounting Diameter, maximum</b> | 203.2 mm   8 in      |
| <b>Mounting Diameter, minimum</b> | 38.1 mm   1.5 in     |
| <b>Pipe Outer Diameter</b>        | 73.025 mm   2.875 in |
| <b>Stand-off Distance</b>         | 1,549.4 mm   61 in   |

## Material Specifications

|                      |                          |
|----------------------|--------------------------|
| <b>Material Type</b> | Hot dip galvanized steel |
|----------------------|--------------------------|

## Mechanical Specifications

|                                |  |
|--------------------------------|--|
| <b>Wind Rating</b>             | For Specifications, please contact <a href="mailto:steelproducts@commscope.com">steelproducts@commscope.com</a> or call 800-255-1479 |
| <b>Wind Rating Test Method</b> | TIA/EIA-222-G  |

# SFG23RHDXL-11-B

---

## Packaging and Weights

**Included** Frame | Stiff arms (2) | Tower attachment

**Packaging quantity** 1

## \* Footnotes

**Wind Rating** BWS—Base Wind Speed; FBC—Florida Building Code