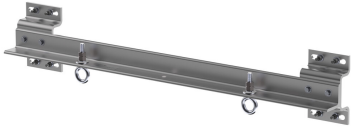


860674607-048 | HG ANCHOR,GUYED-TOWER, 48" FACE



Cable Support Mount for Guyed Towers to Support Cable, 48" Face

-The 860674607-048 is a purpose built tower face bracket that is designed to support 1000 pounds of cable per eye up to 2000 pounds in combination. Ideal for Hybrid cable. Includes mounting eye bolt for attachment.

-Product is designed to be field installed as needed on tower legs and across the tower face to provide an engineered attachment point for the support of cables.

-Can be installed inside or outside of tower face.
-Stands off tower to allow other cables to pass.

-Supports towers with a 48" face width (center to center of leg) and 1.5"-3" Diameter Legs.

-Additional units can be installed along the tower face as needed to support additional cables.

-Not to be used for hoisting.
-Competent person to make determination of usage on the structure.

Product Classification

Portfolio	CommScope®
Product Type	Hoisting Grip Anchor
Ordering Note	CommScope® standard product with terms
Warranty	One year

General Specifications

Cable Runs, quantity	3
Mounting	Round member

Material Specifications

Material Type	Hot dip galvanized steel
----------------------	--------------------------

Packaging and Weights

Included	Attachment kits
Packaging quantity	1

Regulatory Compliance/Certifications

860674607-048 | HG ANCHOR,GUYED-TOWER, 48" FACE

Agency

CHINA-ROHS

REACH-SVHC

ROHS

UK-ROHS

Classification

Above maximum concentration value

Compliant as per SVHC revision on www.commscope.com/ProductCompliance

Compliant/Exempted

Compliant/Exempted



Included Products

- HK-CL-U – Universal Cable Ladder Hardware Kit for 1 in to 4-1/2 in round or angle members

* Footnotes

Warranty

For more information, please consult our Product Warranty guidelines