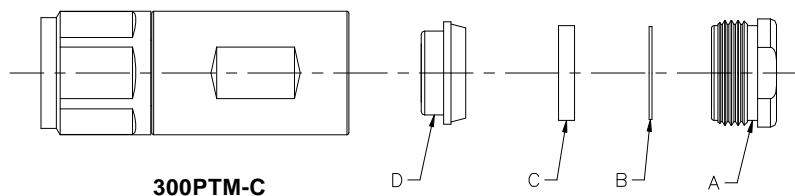


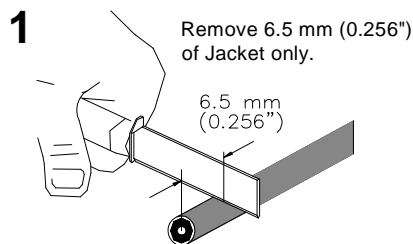
Installation Instructions

Connector Attachment

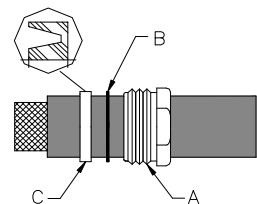
For Braided Cable CNT-300
TNC Male, Captivated Pin,
Clamp-type Body: 300PTM-C



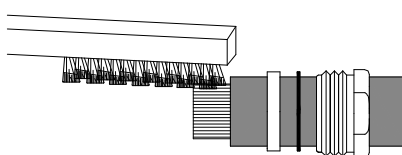
300PTM-C



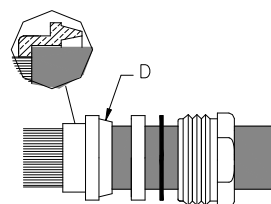
2 Slide parts A, B, C onto the cable.
Note: the direction of part C as shown.



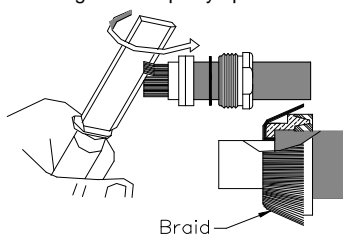
3 Comb braid straight with a wire brush.



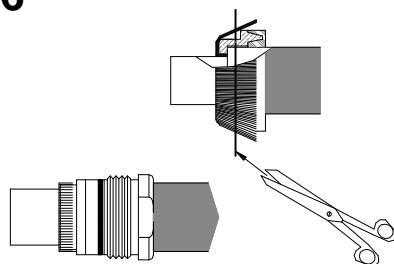
4 Install part D as shown without damaging the braid.



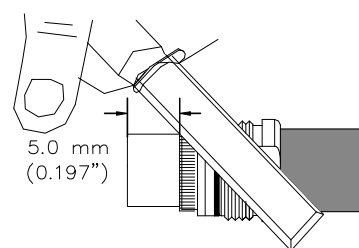
5 Fold braid around part D and comb braid as shown, the braid should be straight and equally spaced after comb.



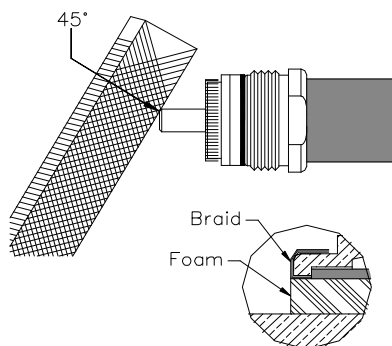
6 Cut off the redundant braid as shown.



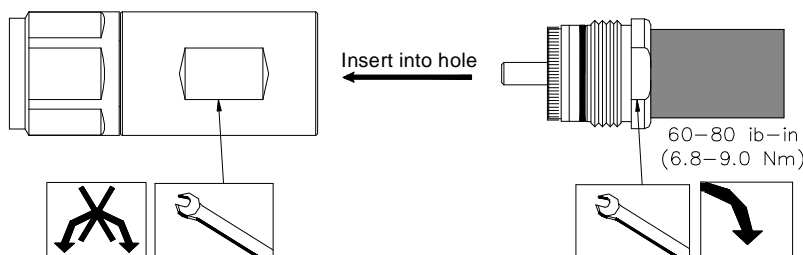
7 Remove 5.0 mm (0.197") of foam.
Remove all foam/glue residue from the center conductor.



8 Chamfer the center conductor at a 45° angle.



9 The cable attachment must be straight and aligned with the hole of connector inner contact. Insert cable attachment into connector body until stopped; the center conductor must be inserted into the connector inner contact fingers. Tighten the connection to the torque value of 60-80 lb-in (6.8-9.0 Nm).
Note: Do not turn connector body, turn cable attachment.
The V type part C are splitted into two pieces after part A installation.



| | 表一 有毒有害物质或元素名称及含量标识格式 | | | | | |
|------------------|-----------------------|--------|--------|------------|------------|--------------|
| | 有毒有害物质或元素 | | | | | |
| 部件名称 (Part Name) | 铅 (Pb) | 汞 (Hg) | 镉 (Cd) | 六价铬 (Cr6+) | 多溴联苯 (PBB) | 多溴二苯醚 (PBDE) |
| 连接器 (Connector) | X | O | O | O | O | O |

O: 表示有毒有害物质在该部件所有的均质材料中的含量均在SJ/T 11363-2006规定的限量要求以下。
X: 表示该有毒有害物质至少在该部件的某一均质材料中的含量超出SJ/T 11363-2006规定的限量要求。

Installation Training Available at Andrew Institute

Notice: Andrew disclaims any liability or responsibility for the results of improper or unsafe installation, inpection, maintenance, or removal practices



Andrew Corporation

3 Westbrook Corporate Center, Suite 900, Westchester, Illinois U.S.A. 60154

+1 (779) 435-8579 Fax (U.S.A.): 1-800-349-5444

www.andrew.com

Copyright © 2007 by Andrew Corporation

Customer Service, 24 hours

U.S.A., Canada, Mexico: 1-800-255-1479

U.K.: 0800 250055

Other Europe: +44 592 782 612

China: +86 512-6256-8805

