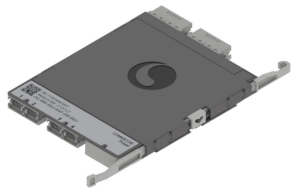


760256116 | PPL-MM-8AU-8AP-SM-BEU



Propel ULL Singlemode MPO-8 Mesh Module, 4x8f MPO/APC non-pinned to 4X8f MPO/APC pinned

- Replicates mesh architecture redundancy without cable congestion
- Can be installed and removed from front or rear of panel
- Serialized QR code provides easy access to factory optical test results
- This component requires 3 of the 12 lanes on the Propel Panel blade

This module simplifies mesh network fiber cabling management and software managed routing.

It takes 4 MPO8 ports from 4 different switches on the rear and assigns a pair from each to each of the 4 MPO8 ports on the front. It replaces a series of array cables (internally) and uses 4 standard MPO8 ULL patch cords on the front to 4 separate switches.

Product Classification

Regional Availability	Asia Australia/New Zealand EMEA Latin America North America
Portfolio	CommScope®
Product Type	Fiber module
Product Brand	Propel
Product Series	PPL

General Specifications

Color, front	Gray
Color, rear	Gray
Interface, front	MPO
Interface Feature, front	APC Internal shutters MPO Pinned
Interface, rear	MPO
Interface Feature, rear	APC Internal shutters MPO Non-Pinned
Total Fibers, quantity	32
Total Ports, quantity, front	4
Total Ports, quantity, rear	4

Dimensions

Height	11 mm 0.433 in
Width	98 mm 3.858 in
Depth	170 mm 6.693 in

Optical Specifications

760256116 | PPL-MM-8AU-8AP-SM-BEU

Fiber Mode	Singlemode
Fiber Type	OS2
Insertion Loss, maximum	0.7 dB

Environmental Specifications

Qualification Standards	IEC 61753-1 TIA-568.3-D
Safety Standard	c-UL-us

Packaging and Weights

Packaging quantity	1
---------------------------	---

Regulatory Compliance/Certifications

Agency	Classification
CHINA-ROHS	Below maximum concentration value
REACH-SVHC	Compliant as per SVHC revision on www.commscope.com/ProductCompliance
ROHS	Compliant
UK-ROHS	Compliant

