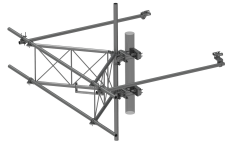


# SFG23RHDXL-12-B

---



G23RHDXL PIM OPTIMIZED SPACING High Capacity Sector Frame with extended 10' Spine for RRU Mounting & extended frame for sites requiring increased sector to sector antenna spacing. 2 7/8in OD x 12.5ft face. Antenna pipes sold separately.

## Product Classification

<b>Product Type</b>	High capacity Tower sector frame
<b>Product Series</b>	G2

## General Specifications

<b>Mounting</b>	Angle 60°, 203.2 mm (8 in)   Straight or tapered legs up to 203.2 mm (8 in) OD
<b>Patent Number</b>	For patents see: <a href="http://www.cs-pat.com">www.cs-pat.com</a>
<b>Pipe, quantity</b>	0
<b>Sectors, quantity</b>	1
<b>Tower Taper</b>	Non-tapered   Tapered

## Dimensions

<b>Height</b>	838.2 mm   33 in
<b>Face Width</b>	3.81 m   12.5 ft
<b>Width</b>	3,810 mm   150 in
<b>Face Support Pipe Diameter</b>	73.025 mm   2.875 in
<b>Mounting Diameter, maximum</b>	203.2 mm   8 in
<b>Mounting Diameter, minimum</b>	38.1 mm   1.5 in
<b>Pipe Outer Diameter</b>	73.025 mm   2.875 in
<b>Stand-off Distance</b>	1,549.4 mm   61 in

## Material Specifications

<b>Material Type</b>	Hot dip galvanized steel
----------------------	--------------------------

## Mechanical Specifications

<b>Wind Rating</b>	For Specifications, please contact <a href="mailto:steelproducts@commscope.com">steelproducts@commscope.com</a> or call 800-255-1479
--------------------	--

# SFG23RHDXL-12-B

---

**Wind Rating Test Method** TIA/EIA-222-G

## Packaging and Weights

**Included** Frame | Stiff arms (2) | Tower attachment

**Packaging quantity** 1

**Weight, net** 345.293 kg | 761.24 lb

## \* Footnotes

**Wind Rating** BWS—Base Wind Speed; FBC—Florida Building Code