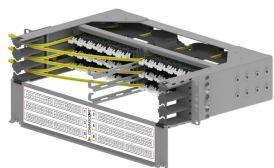


760252389 | EQP-2U-6X-MOD-NG4



Fiber Optic Equipment Panel, 2U, 19-Inch, for holding up to 6 single high NG4 or right hand patch FACT modules

The Equipment Panel used in conjunction with NG4/FACT cabled modules (CMODs) and "FACT chassis right side installed" FACT-MPO modules. For fast and easy link creation in for example Equipment Racks.

- ° 19 inch/ETSI installation with multiple mounting depths
- ° 2 HU Panel
- ° up to 6 modules, 6x 12 SC = 72 connections or 6x 24 LC = 144 connections
- ° Full front access
- ° Front cable and patch cord management (all left; all right; left and right)
- ° CMOD breakout or MPO cable diameter up to 3.5mm
- ° Front door with label for individual port numbering

Product Classification

Regional Availability	Australia/New Zealand EMEA Middle East/Africa North America
Portfolio	CommScope®
Product Type	Fiber patch panel
Product Brand	FACT® NG4access®
Product Series	FACT NG4

General Specifications

Application	Used with NG4 modules, precabled or MPO Used with right sided FACT modules, precabled or MPO
Color	Gray
Interface, front	Unloaded
Module/Adapter Pack Slots, quantity	6
Rack Units	2
Shelf Movement	Fixed
Total Ports, quantity	144

Dimensions

Height	88 mm 3.465 in
Width	430 mm 16.929 in
Depth	278 mm 10.945 in

Material Specifications

Material Type Steel

Packaging and Weights

Packaging quantity 1