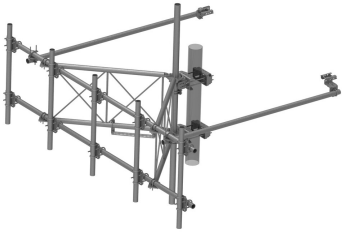


# SFG23RHDXL15-5-96



G23RHDXL PIM OPTIMIZED SPACING High Capacity Sector Frame with extended 10' Spine for RRU Mounting & extended frame for sites requiring increased sector to sector antenna spacing. 2 7/8in OD x 15ft face with (5) 2-7/8in OD x 96in Antenna pipes

## Product Classification

<b>Product Type</b>	High capacity Tower sector frame
<b>Product Brand</b>	PIM-guard
<b>Product Series</b>	G2

## General Specifications

<b>Mounting</b>	Angle 60°, 203.2 mm (8 in)   Straight or tapered legs up to 203.2 mm (8 in) OD
<b>Patent Number</b>	For patents see: <a href="http://www.cs-pat.com">www.cs-pat.com</a>
<b>Pipe, quantity</b>	5
<b>Sectors, quantity</b>	1
<b>Tower Taper</b>	Non-tapered   Tapered

## Dimensions

<b>Height</b>	2,438.4 mm   96 in
<b>Face Width</b>	4,572 m   15 ft
<b>Platform Width</b>	4,572 mm   180 in
<b>Face Support Pipe Diameter</b>	73.025 mm   2.875 in
<b>Mounting Diameter, maximum</b>	203.2 mm   8 in
<b>Mounting Diameter, minimum</b>	38.1 mm   1.5 in
<b>Pipe Outer Diameter</b>	73.025 mm   2.875 in

## Material Specifications

<b>Material Type</b>	Hot dip galvanized steel
----------------------	--------------------------

## Mechanical Specifications

<b>Wind Rating</b>	For Specifications, please contact <a href="mailto:steelproducts@commscope.com">steelproducts@commscope.com</a> or call 800-255-1479
<b>Wind Rating Test Method</b>	TIA/EIA-222-G

# SFG23RHDXL15-5-96

---

## Packaging and Weights

**Included** Frame | Plain end pipes | Stiff arms (2) | Tower attachment  
**Packaging quantity** 1

## \* Footnotes

**Wind Rating** BWS—Base Wind Speed; FBC—Florida Building Code