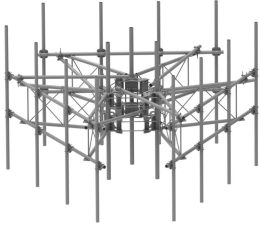


# MCG23RHDXL12M12126



G23RHDXL PIM OPTIMIZED SPACING High Capacity Monopole platform with extended 10' Spine for RRU Mounting & extended frame for sites requiring increased sector to sector antenna spacing. 2 7/8in OD x 12ft face with (12) 2-7/8in OD x 126in Antenna pipes

- Extended spine for MCG23 RHDXL mounts that decrease PIM from radio relocation PLUS extended frames for increased antenna-to-antenna spacing
- Increased versatility and stability
- Updated frame provides higher loading
- More RRU mounting available, reducing need for additional mounts
- Better load management
- Less structure stress
- Designed to be used in combination with APEX RRU mounts

## Product Classification

<b>Product Type</b>	High capacity monopole sector frame
<b>Product Brand</b>	PIM-guard
<b>Product Series</b>	G2

## General Specifications

<b>Mounting</b>	Monopole, 381–1270 mm (15–50 in) OD
<b>Pipe, quantity</b>	12
<b>Sectors, quantity</b>	3

## Dimensions

<b>Height</b>	3,200.4 mm   126 in
<b>Face Width</b>	3.81 m   12.5 ft
<b>Width</b>	3,810 mm   150 in
<b>Pipe Length</b>	3,200.4 mm   126 in
<b>Face Support Pipe Diameter</b>	73.025 mm   2.875 in
<b>Mounting Diameter, maximum</b>	1270 mm   50 in
<b>Mounting Diameter, minimum</b>	381 mm   15 in
<b>Pipe Outer Diameter</b>	73.025 mm   2.875 in
<b>Stand-off Distance</b>	1,549.4 mm   61 in

## Material Specifications

# MCG23RHDXL12M12126

---

**Material Type** Hot dip galvanized steel

## Mechanical Specifications

**Wind Rating** For Specifications, please contact [steelproducts@commscope.com](mailto:steelproducts@commscope.com) or call 800-255-1479

**Wind Rating Test Method** TIA/EIA-222

## Packaging and Weights

**Included** Mounting hardware | Pipe mounts | Plain end pipes (12) | Ring mounts (2) | Sector frames (3) | Stiff arm

**Packaging quantity** 1

**Weight, net** 1,481.886 kg | 3267 lb

## \* Footnotes

**Wind Rating** BWS—Base Wind Speed; FBC—Florida Building Code