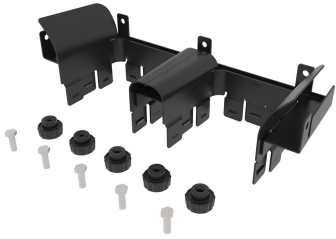


# FGS-HDSI-F/A2



FiberGuide® EXPRESS EXIT 12" Insert Reducer, 4x12 to 2times 4x4in , Black

## Product Classification

<b>Regional Availability</b>	Asia   Australia/New Zealand   EMEA   Latin America   North America
<b>Portfolio</b>	CommScope®
<b>Product Type</b>	Drop kit
<b>Product Brand</b>	FiberGuide®
<b>Product Series</b>	FGS

## General Specifications

<b>Color</b>	Black
<b>Orientation</b>	Vertical
<b>Section Type</b>	Reducer

## Dimensions

<b>Height</b>	108.966 mm   4.29 in
<b>Width</b>	111.76 mm   4.4 in
<b>Length</b>	338.328 mm   13.32 in
<b>System Dimensions</b>	102 mm x 102 mm (4 in x 4 in)   102 mm x 152 mm (4 in x 6 in)   51 mm x 102 mm (2 in x 4 in)

## Material Specifications

<b>Material Type</b>	Aluminum
----------------------	----------

## Packaging and Weights

<b>Weight, net</b>	1.071 kg   2.361 lb
--------------------	---------------------

## Regulatory Compliance/Certifications

<b>Agency</b>	<b>Classification</b>
CHINA-ROHS	Below maximum concentration value
REACH-SVHC	Compliant as per SVHC revision on <a href="http://www.commscope.com/ProductCompliance">www.commscope.com/ProductCompliance</a>

# FGS-HDSI-F/A2

---

ROHS Compliant

UK-ROHS Compliant

