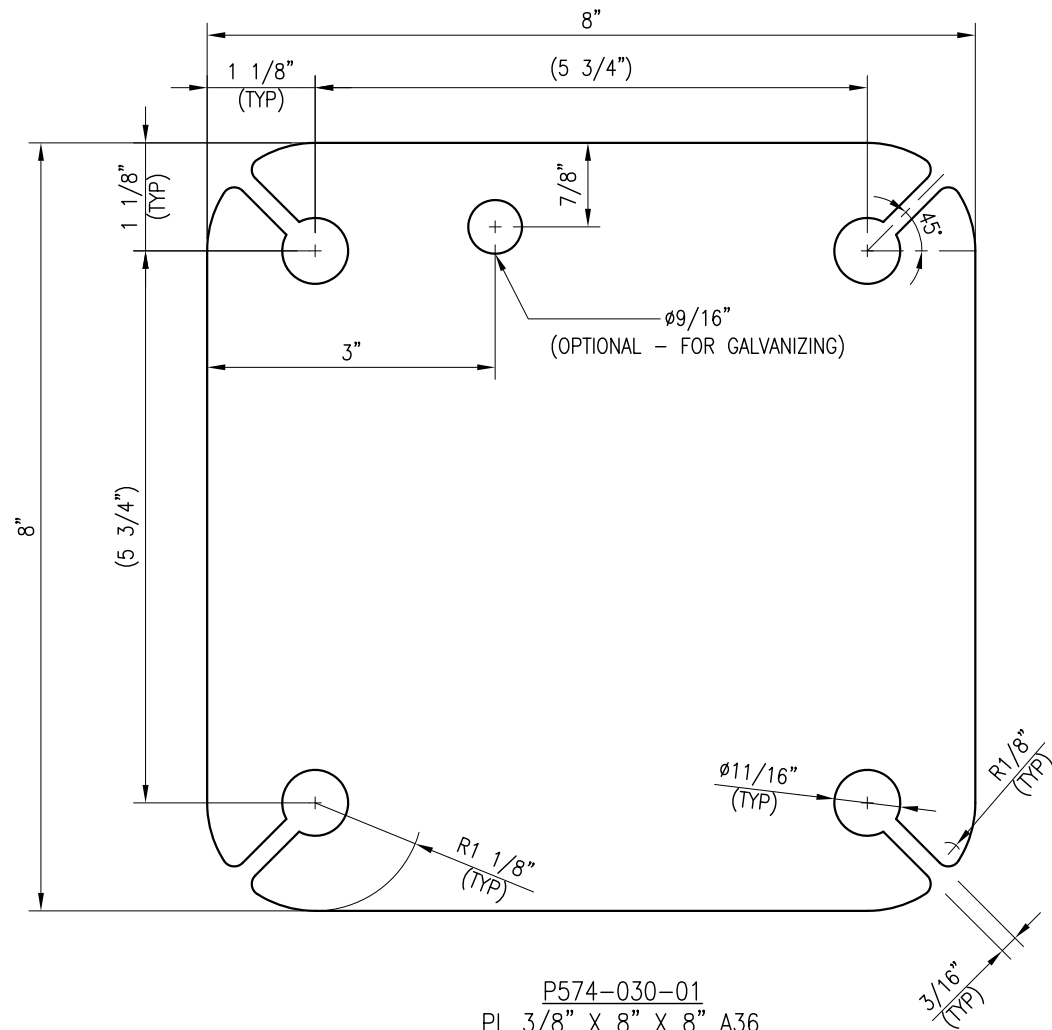


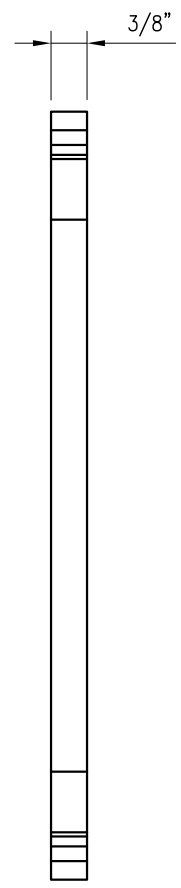
NOTES:
 1. HOT-DIPPED GALVANIZED PER ASTM A123.
 2. FITS $\phi 1.66''$ O.D. TO $\phi 4.5''$ O.D. PIPE.

| TES-SS-MSK12 (UNIVERSAL CROSSOVER PLATE) | | | | | |
|--|------|-------------|---|----------|-------|
| ITEM NO. | QTY. | PART NO. | DESCRIPTION | SHEET # | WT |
| 1 | 1 | P574-030-01 | UNIVERSAL CROSSOVER PLATE | MSK12-F1 | 6.46 |
| 2 | 4 | VCP | PL 1/2" X 2" X 8 5/8" A36 BENT PLATE | MSK3-F1 | 2.4 |
| 3 | 4 | --- | 5/8" DIA. X 1'-0" ALL THREAD ROD $F_y = 36$ KSI HDG | --- | 0 |
| 4 | 16 | --- | 5/8" HDG LOCK WASHER | --- | 0 |
| 5 | 16 | --- | 5/8" HDG USS FLAT WASHER | --- | 0 |
| 6 | 16 | --- | 5/8" HDG HEX NUT | --- | 0 |
| GALVANIZED WT | | | | | 22.99 |

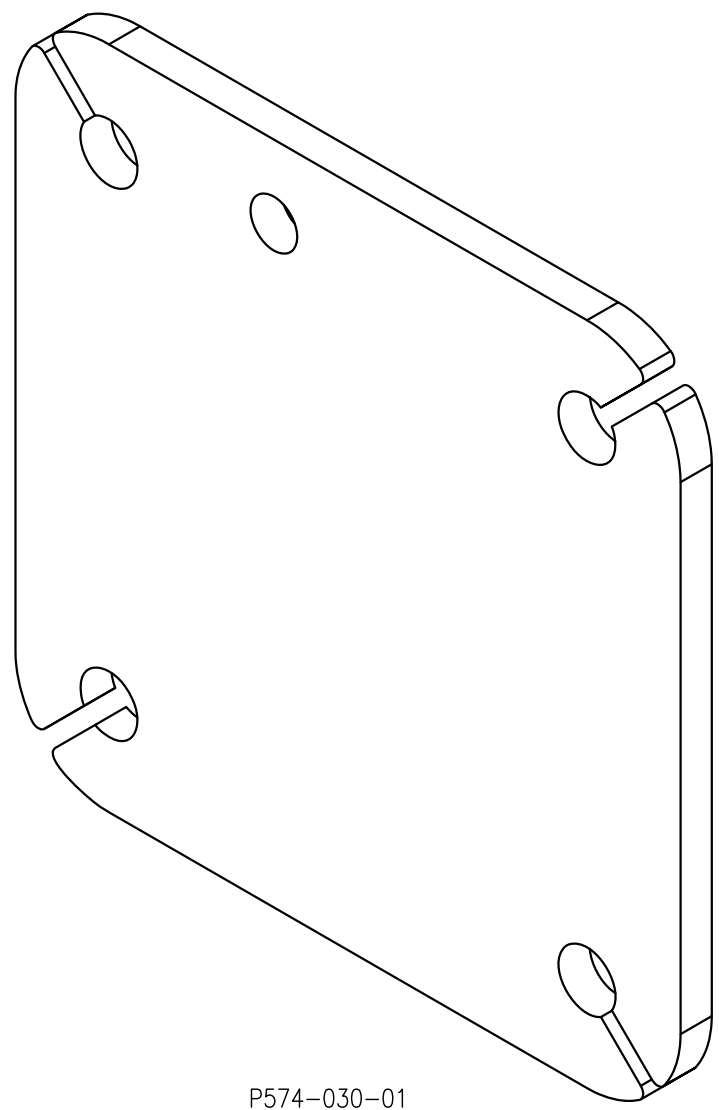
| | | | |
|--|-------------|-------------------|----------|
| DRAWN BY: PF | | CHECKED BY: KW/SK | |
| REV. | DESCRIPTION | BY | DATE |
| 1 | FIRST ISSUE | PF | 07/18/23 |
| | | | |
| | | | |
| | | | |
| SHEET TITLE: | | | |
| TES-SS-MSK12 UNIVERSAL CROSSOVER PLATE | | | |
| SHEET NUMBER: | | REV #: | |
| TES-SS-MSK12 | | 0 | |



P574-030-01
 PL 3/8" X 8" X 8" A36
 (6.46 LBS)



SIDE VIEW



P574-030-01
 ISOMETRIC VIEW

- NOTES:
 1. HOT-DIPPED GALVANIZED PER ASTM A123.
 2. ALL HOLES ARE 11/16" DIA. U.N.O

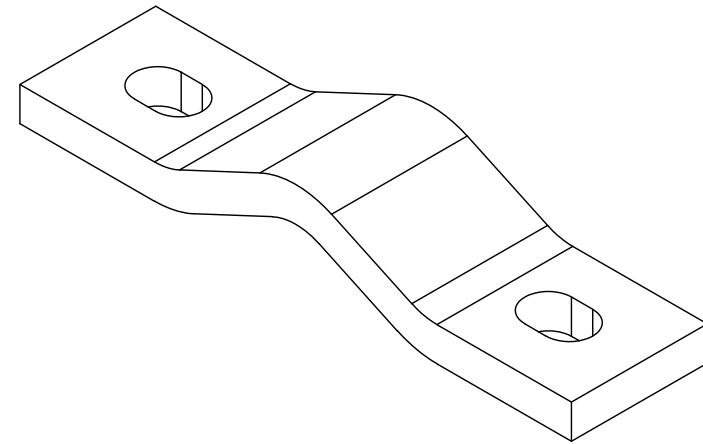
DRAWN BY: PF CHECKED BY: KW/SK

| REV. | DESCRIPTION | BY | DATE |
|------|-------------|----|----------|
| 1 | FIRST ISSUE | PF | 07/18/23 |
| | | | |
| | | | |
| | | | |

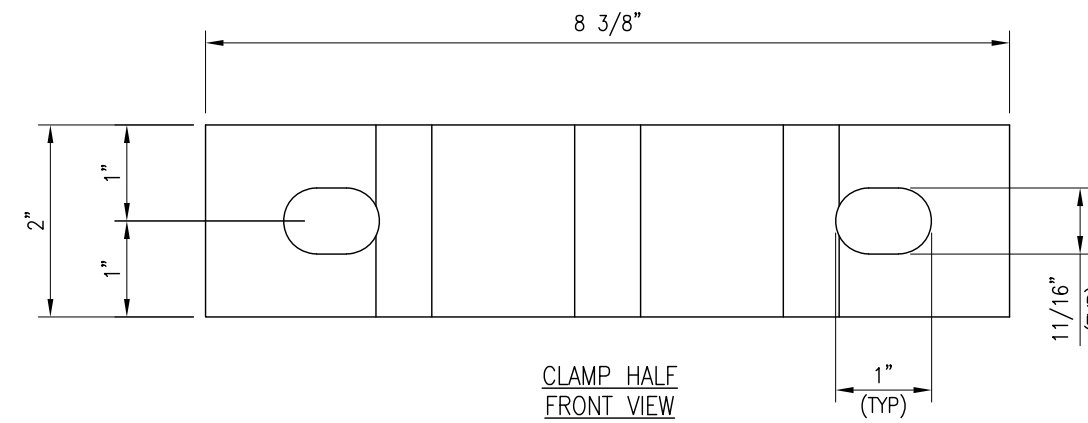
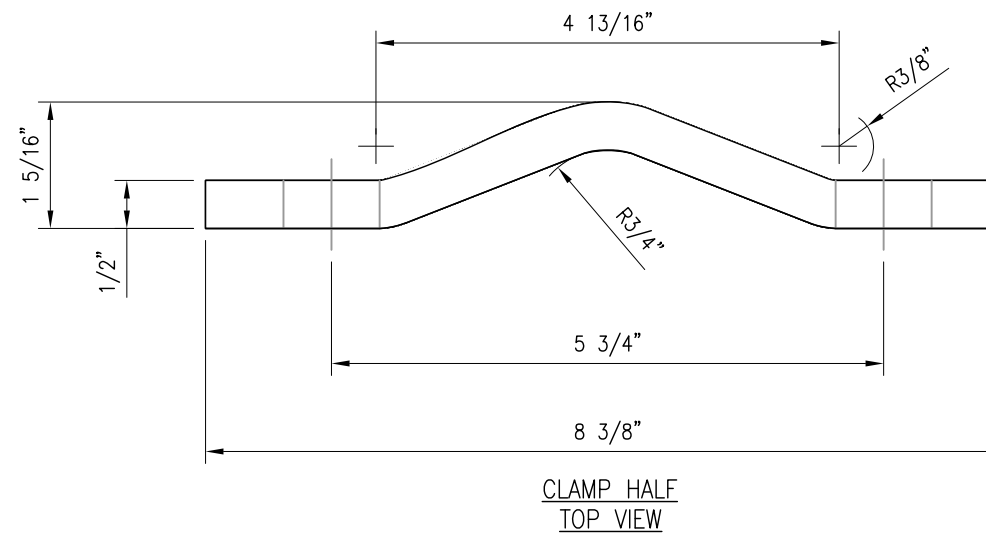
SHEET TITLE:

FABRICATION DETAILS

SHEET NUMBER: MSK12-F1 REV #: 0



CLAMP HALF
ISOMETRIC VIEW



VCP
PL 1/2" X 2" X 8 5/8" A36 BENT PLATE

- NOTES:
 1. HOT-DIPPED GALVANIZED PER ASTM A123.
 2. ALL HOLES ARE 11/16" DIA. U.N.O

DRAWN BY: PF CHECKED BY: KW/SK

| REV. | DESCRIPTION | BY | DATE |
|------|-------------|----|----------|
| 1 | FIRST ISSUE | PF | 07/18/23 |
| | | | |
| | | | |
| | | | |

SHEET TITLE:

FABRICATION DETAILS

SHEET NUMBER: MSK3-F1 REV #: 0