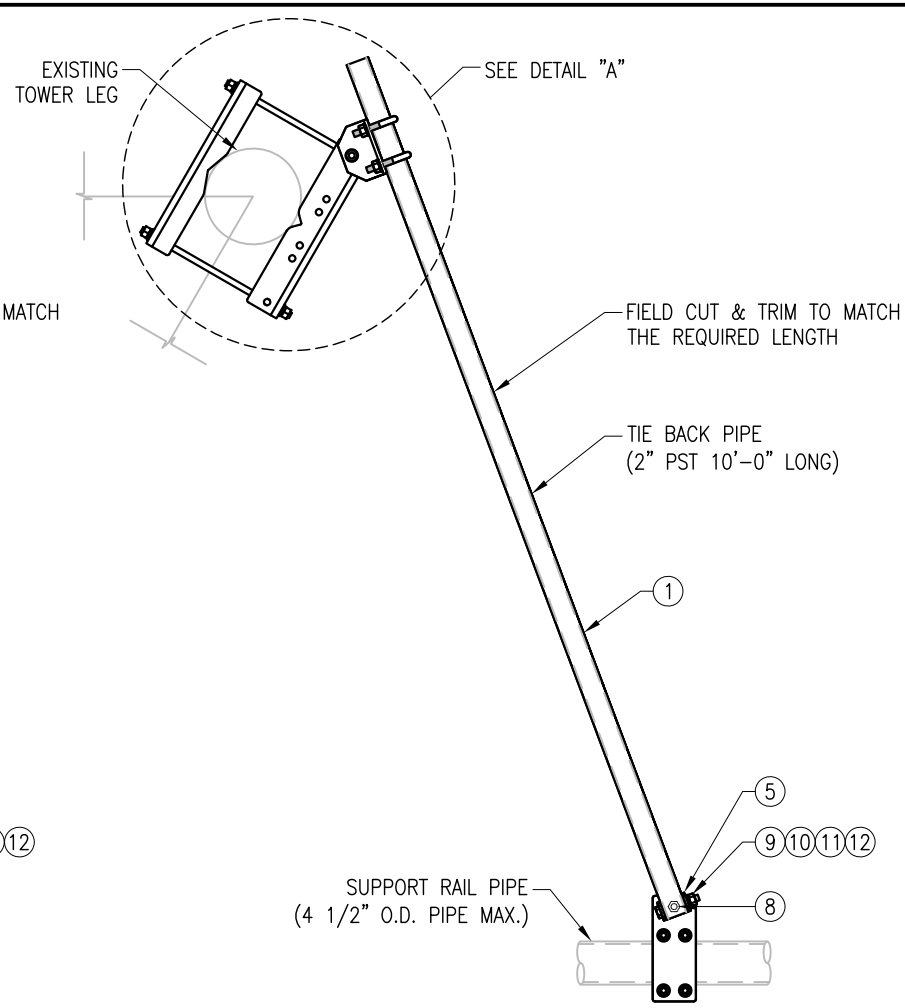
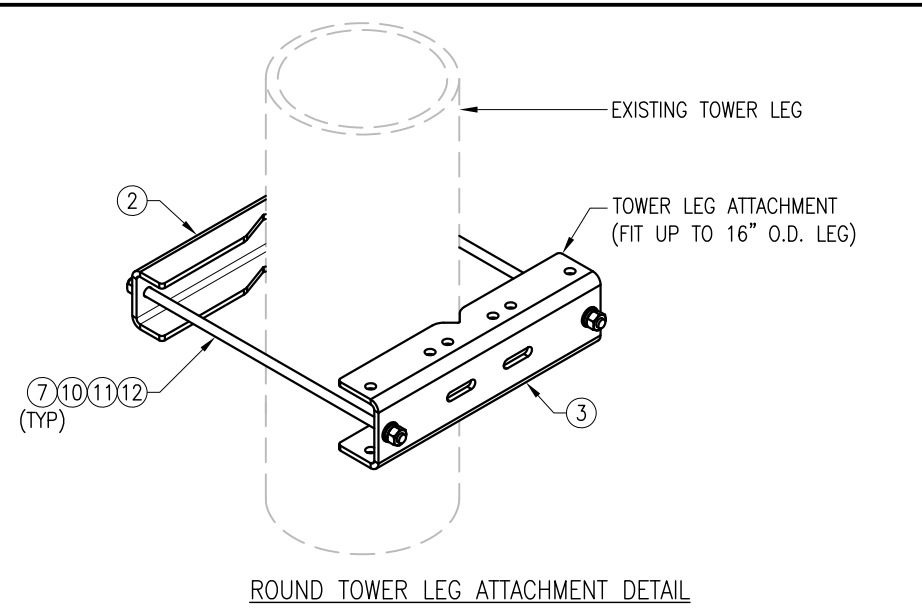


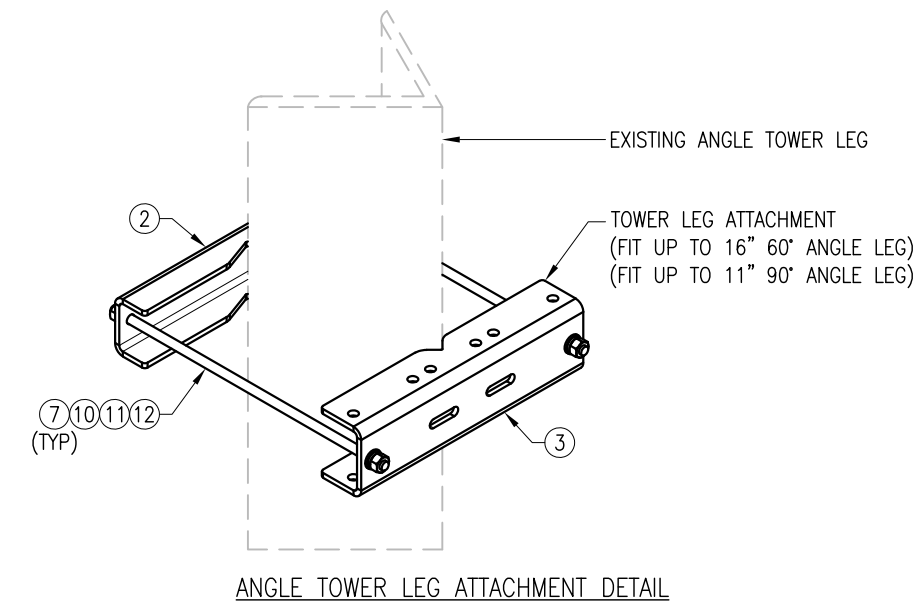
PLAN VIEW  
TIE BACK ASSEMBLY



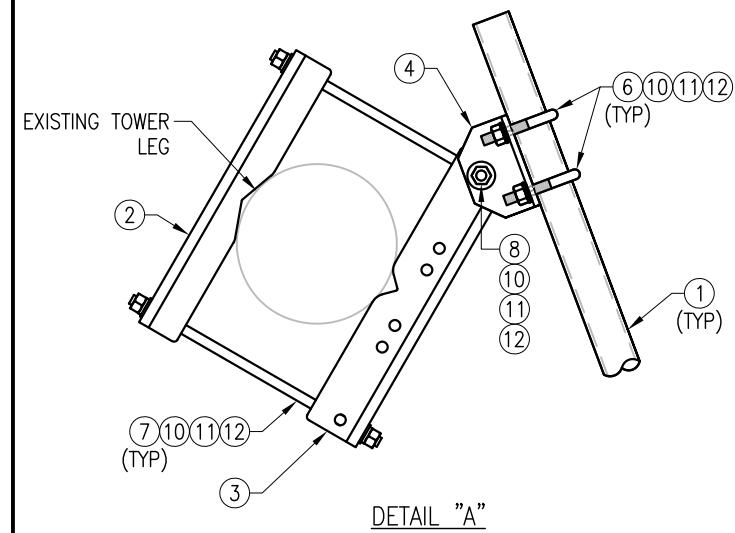
PLAN VIEW  
TIE BACK ASSEMBLY WITH ADAPTER FOR PIPE



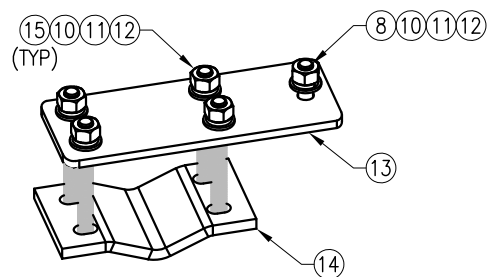
ROUND TOWER LEG ATTACHMENT DETAIL



ANGLE TOWER LEG ATTACHMENT DETAIL



DETAIL "A"



ADAPTER FOR PIPE CONNECTION

| TES-SS-SFK1L (TIE BACK ASSEMBLY FOR LARGER LEG) |      |                  |   |          |    |
|---|------|------------------|---|----------|----|
| ITEM NO.  | QTY. | PART NO.         | DESCRIPTION   | SHEET #  | WT |
| 1   | 1    | PST2375-10       | 2" PST (2.375" O.D. X 0.154" THK) X 10'-0" A53 GR-B 35KSI | SFK1L-F1 | 38 |
| 2   | 1    | BP8625-19625     | PL 3/8" X 8 3/8" X 1'-7 5/8" A36 BENT PLATE               | SFK1L-F2 | 17 |
| 3   | 1    | BP11125-19625    | PL 3/8" X 11 1/4" X 1'-7 5/8" A36 BENT PLATE              | SFK1L-F3 | 23 |
| 4   | 1    | BP6-9375         | PL 3/8" X 6" X 9 3/8" A36 BENT PLATE                      | SFK1L-F4 | 6  |
| 5   | 1    | BP2-875          | PL 1/4" X 2" X 8 3/4" A36 BENT PLATE                      | SFK1L-F4 | 1  |
| 6   | 2    | MS02-625-300-500 | RU-BOLT 5/8" X 3" I.W. X 5" I.L. A36 (OR EQUIV.)          | RBC-1    | 2  |
| 7   | 2    | ---              | THREADED ROD 5/8" DIA. X 1'-6" Fy= 36 KSI HDG             | ---      | 0  |
| 8   | 2    | ---              | BOLT 5/8" X 2" A325                                       | ---      | 0  |
| 9   | 1    | ---              | BOLT 5/8" X 4 1/4" A325                                   | ---      | 0  |
| 10  | 15   | FW-625           | 5/8" HDG USS FLAT WASHER                                  | ---      | 1  |
| 11  | 15   | LW-625           | 5/8" HDG LOCK WASHER                                      | ---      | 0  |
| 12  | 15   | NUT-625          | 5/8" HDG HEX NUT  | ---      | 2  |
| 13  | 1    | PL375-4511       | PL 3/8" X 4 1/2" X 11" A36                                | SFK1L-F1 | 4  |
| 14  | 1    | V-CLAMP          | PL 1/2" X 4 1/4" X 8 5/8" A36 BEND PLATE                  | SFK1L-F5 | 5  |
| 15  | 4    | ---              | BOLT 5/8" X 6" FULL THREAD SAE GR 5                       | ---      | 0  |
| GALVANIZED WT                                   |      |                  |   |          | 99 |

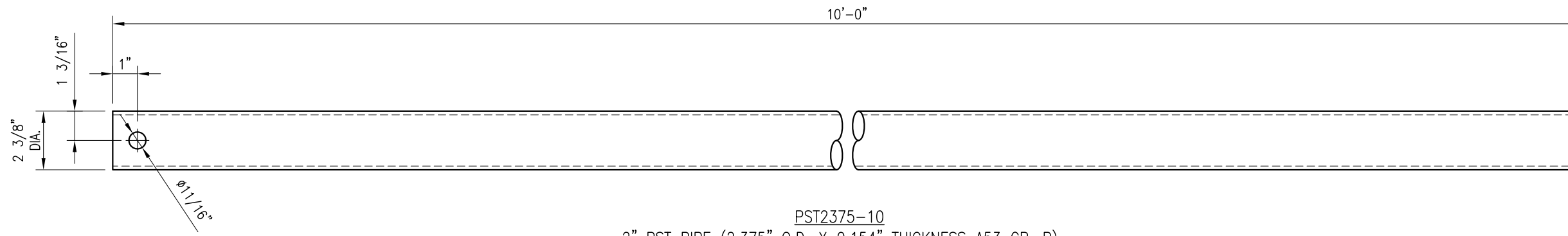
NOTES:  
1. HOT-DIPPED GALVANIZED PER ASTM A123.

DRAWN BY: SP CHECKED BY: KW/HMA

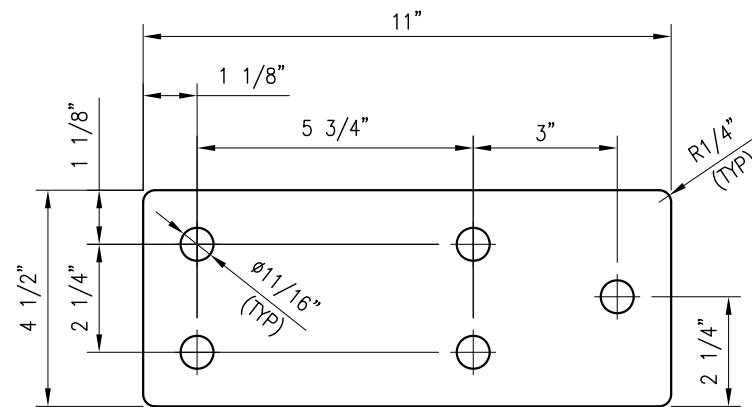
| REV. | DESCRIPTION | BY | DATE     |
|------|-------------|----|----------|
| △    | FIRST ISSUE | SP | 07/18/23 |
| △    |             |    |          |
| △    |             |    |          |
| △    |             |    |          |

SHEET TITLE:  
TES-SS-SFK1L  
TIE BACK ASSEMBLY  
FOR LARGER LEG

SHEET NUMBER: TES-SS-SFK1L REV #: 0



PST2375-10  
 2" PST PIPE (2.375" O.D. X 0.154" THICKNESS A53 GR. B)  
 (37.7 LBS)



PL375-4511  
 PL 3/8" X 4 1/2" X 11" A36  
 (3.64 LBS)

NOTES:  
 1. HOT-DIPPED GALVANIZED PER ASTM A123.

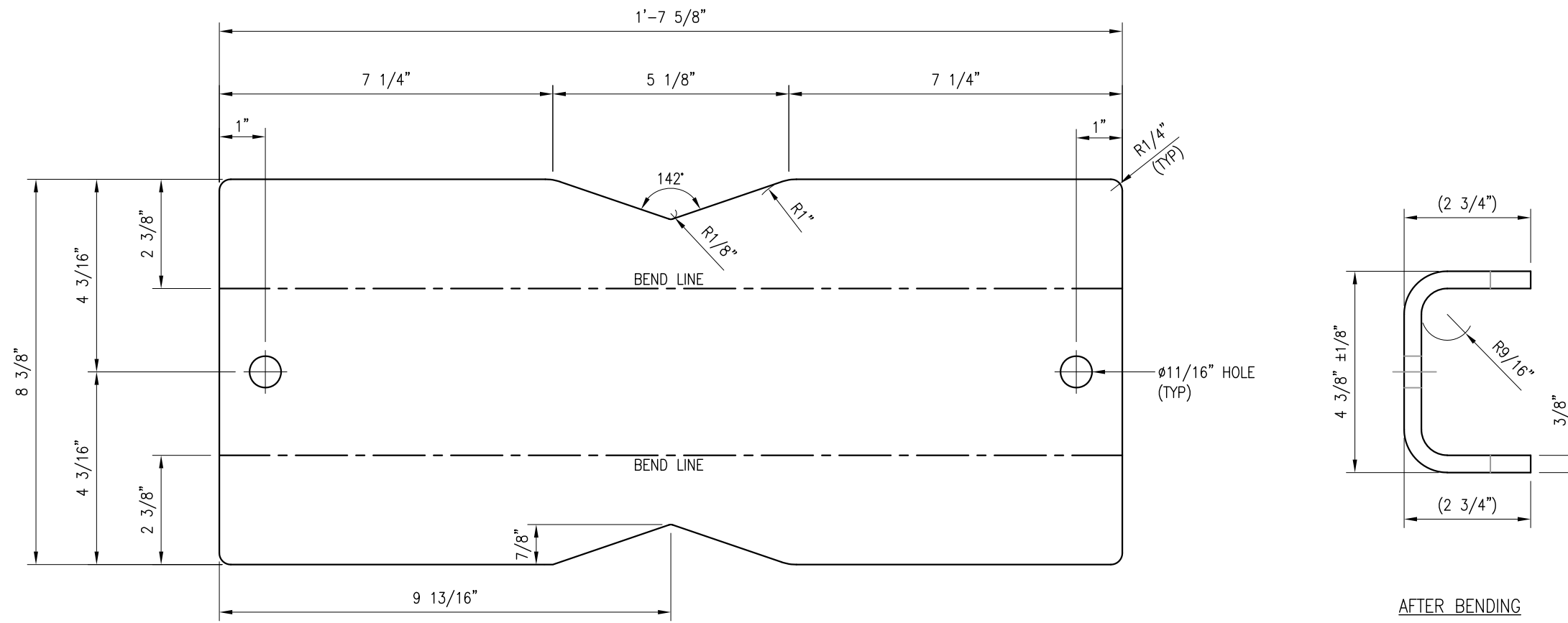
DRAWN BY: SP CHECKED BY: KW/HMA

| REV. | DESCRIPTION | BY | DATE     |
|------|-------------|----|----------|
| 1    | FIRST ISSUE | SP | 07/18/23 |
|      |             |    |          |
|      |             |    |          |
|      |             |    |          |

SHEET TITLE:

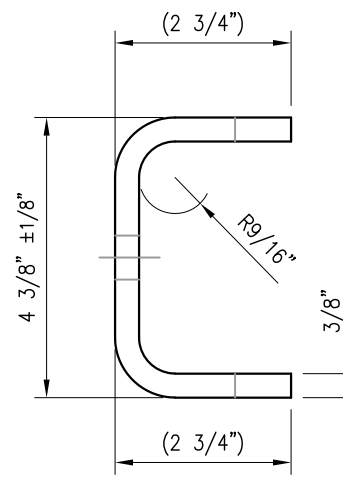
FABRICATION DETAILS

SHEET NUMBER: SFK1L-F1 REV #: 0



BEFORE BENDING

BP8625-19625  
 PL 3/8" X 8 3/8" X 1'-7 5/8" A36 BENT PLATE  
 (17.16 LBS)



AFTER BENDING

NOTES:  
 1. HOT-DIPPED GALVANIZED PER ASTM A123.

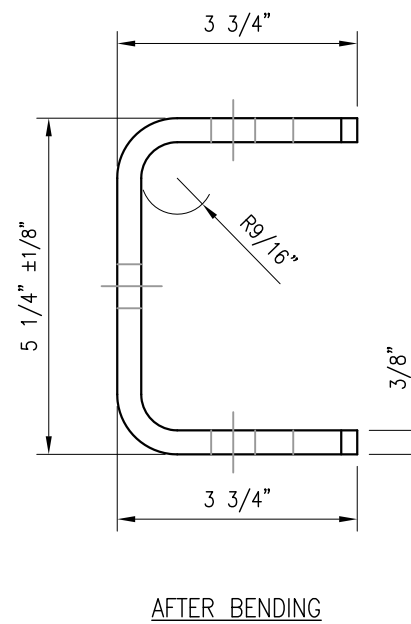
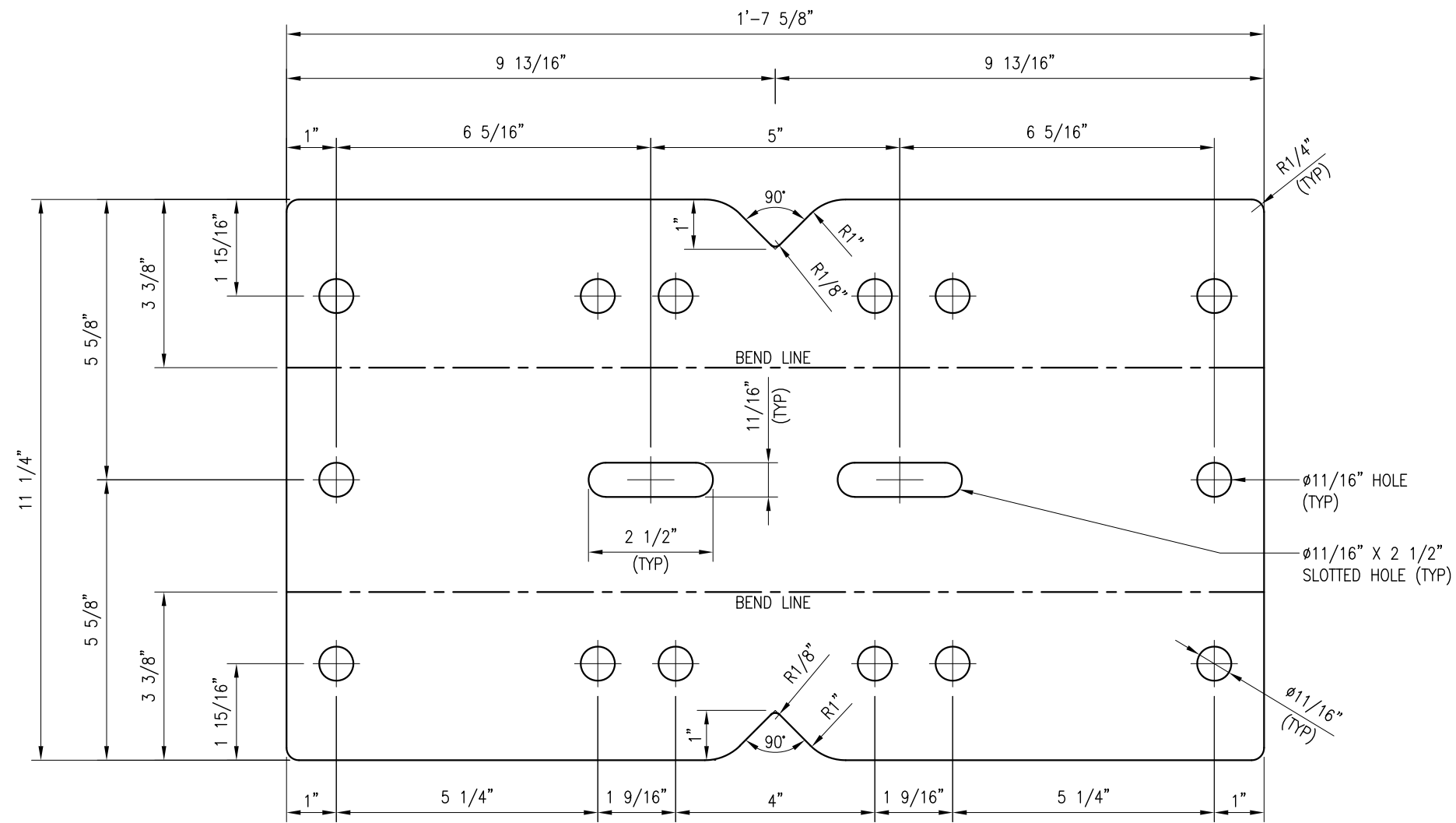
DRAWN BY: SP CHECKED BY: KW/HMA

| REV. | DESCRIPTION | BY | DATE     |
|------|-------------|----|----------|
| 1    | FIRST ISSUE | SP | 07/18/23 |
|      |             |    |          |
|      |             |    |          |
|      |             |    |          |

SHEET TITLE:

FABRICATION DETAILS

SHEET NUMBER: SFK1L-F2 REV #: 0



BEFORE BENDING

BP11125-19625  
 PL 3/8" X 11 1/4" X 1'-7 5/8" A36 BENT PLATE  
 (22.59 LBS)

NOTES:  
 1. HOT-DIPPED GALVANIZED PER ASTM A123.

DRAWN BY: SP CHECKED BY: KW/HMA

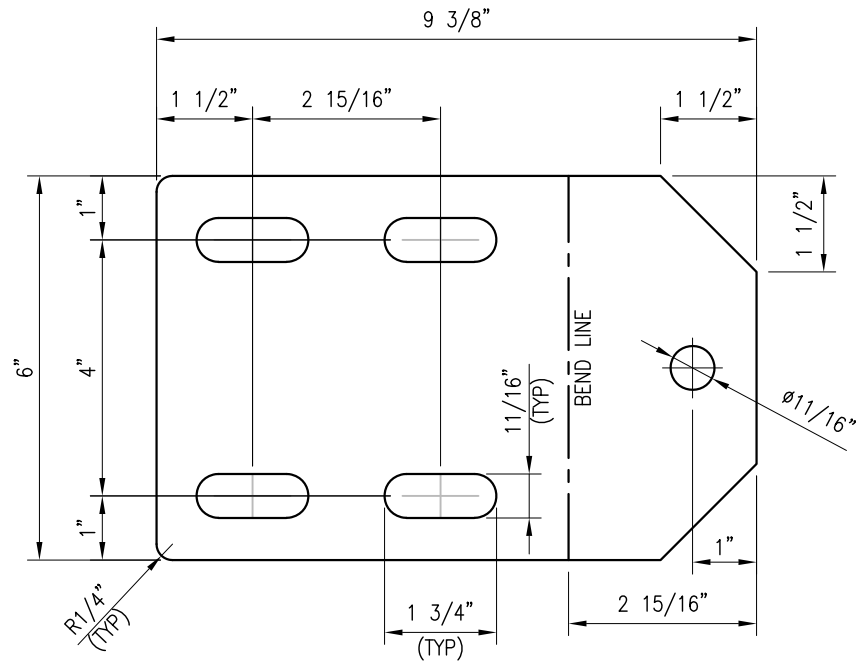
| REV. | DESCRIPTION | BY | DATE     |
|------|-------------|----|----------|
| △    | FIRST ISSUE | SP | 07/18/23 |
| △    |             |    |          |
| △    |             |    |          |
| △    |             |    |          |

SHEET TITLE:

FABRICATION DETAILS

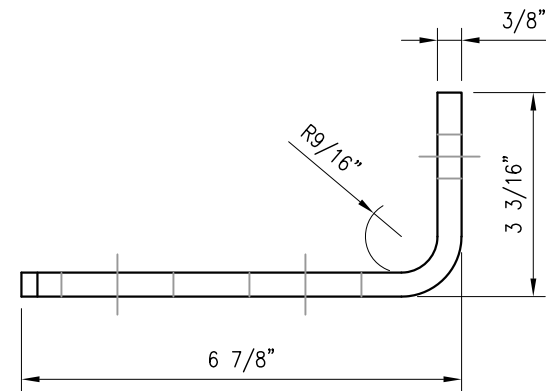
SHEET NUMBER: REV #:

SFK1L-F3 0

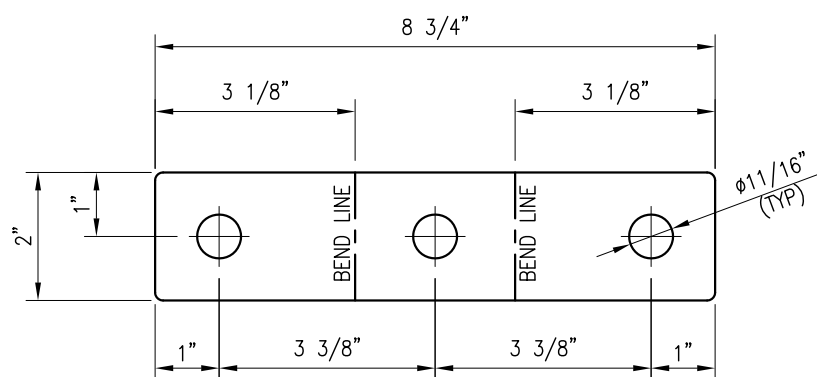


BEFORE BENDING

BP6-9375  
 PL 3/8" X 6" X 9 3/8" A36 BENT PLATE  
 (6.07 LBS)

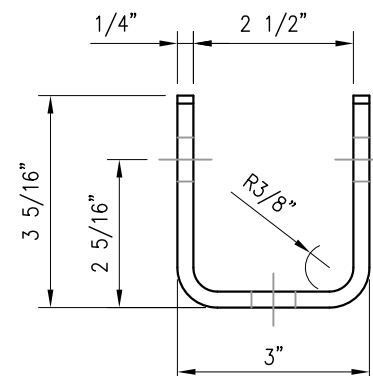


AFTER BENDING



BEFORE BENDING

BP2-875  
 PL 1/4" X 2" X 8 3/4" A36 BENT PLATE  
 (1.27 LBS)



AFTER BENDING

NOTES:  
 1. HOT-DIPPED GALVANIZED PER ASTM A123.

DRAWN BY: SP CHECKED BY: KW/HMA

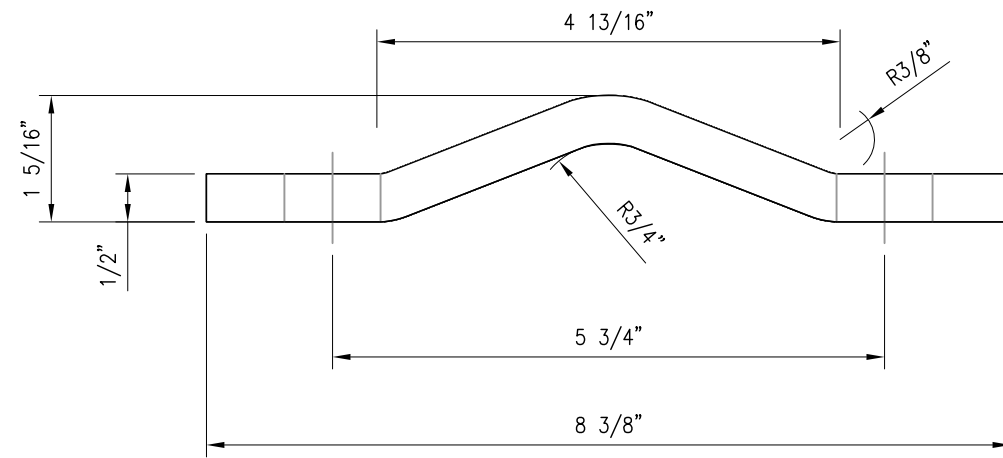
| REV. | DESCRIPTION | BY | DATE     |
|------|-------------|----|----------|
| 1    | FIRST ISSUE | SP | 07/18/23 |
|      |             |    |          |
|      |             |    |          |
|      |             |    |          |

SHEET TITLE:

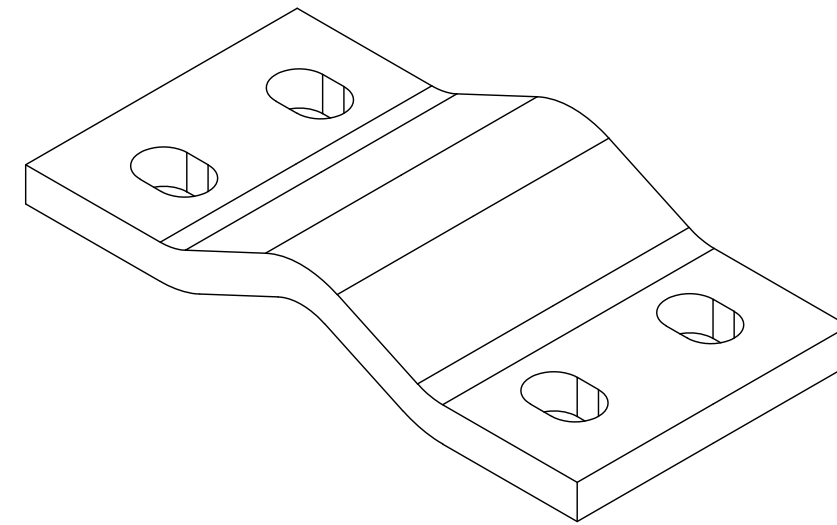
FABRICATION DETAILS

SHEET NUMBER: REV #:

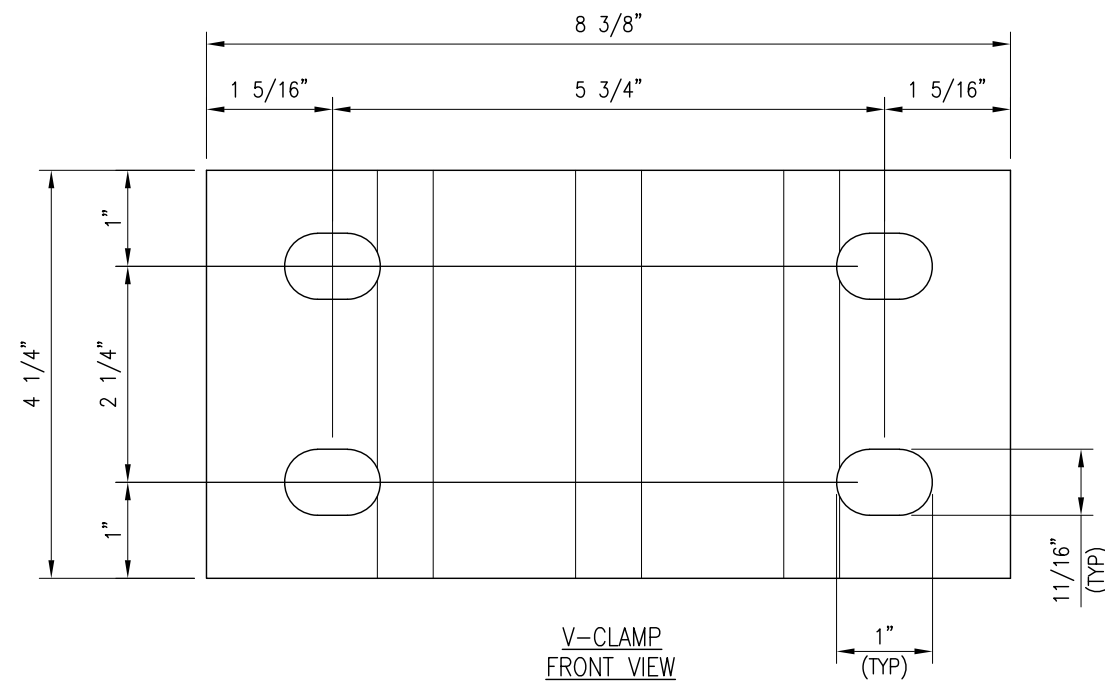
SFK1L-F4 0



V-CLAMP  
TOP VIEW



V-CLAMP  
ISOMETRIC VIEW



V-CLAMP  
FRONT VIEW

V-CLAMP  
PL 1/2" X 4 1/4" X 8 5/8" A36 BENT PLATE

NOTES:  
1. HOT-DIPPED GALVANIZED PER ASTM A123.

DRAWN BY: SP CHECKED BY: KW/HMA

| REV. | DESCRIPTION | BY | DATE     |
|------|-------------|----|----------|
| 1    | FIRST ISSUE | SP | 07/18/23 |
|      |             |    |          |
|      |             |    |          |
|      |             |    |          |

SHEET TITLE:

FABRICATION DETAILS

SHEET NUMBER: REV #:

SFK1L-F5 0

