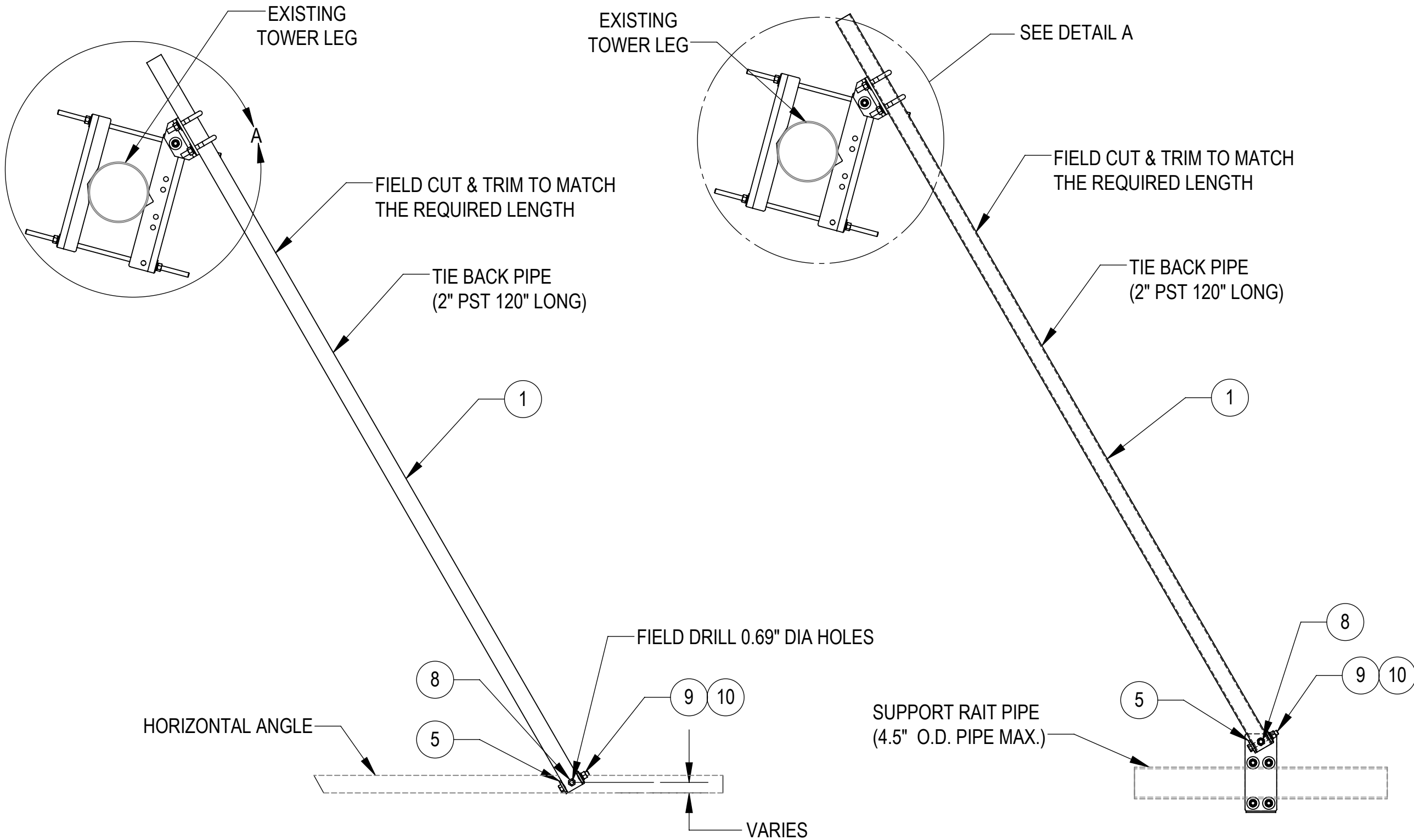


- 1.0 GENERAL NOTES
- 1.1 ALL METRIC DIMENSIONS ARE IN BRACKETS [X. X]
- 1.2 FOR PATENT INFO: <https://www.cs-pat.com>
- 2.0 DESIGN NOTES
- 2.1 ANY HAZARDS OR OBSTRUCTIONS TO THE CLIMBING FACILITY AND SAFETY CLIMB MUST BE IDENTIFIED PRIOR TO INSTALLING THE APPURTENANCE. ADDITIONAL PRODUCTS MAY BE REQUIRED TO MAINTAIN THE INTEGRITY OF THE SAFETY CLIMB. DURING INSTALLATION, TEMPORARY AND/OR PERMANENT PRECAUTIONARY MEASURES SHOULD BE TAKEN TO PRESERVE THE CLIMBING FACILITY AND/OR SAFETY CLIMB.
- 3.0 MANUFACTURING/SPECIAL REQUIREMENTS
- 3.1 TIGHTEN ALL BOLTS SECURING FLAT PLATES BY THE TURN-OF-NUT METHOD. TIGHTEN ALL U-BOLTS USING TURN-OF-NUT METHOD WITH ATTENTION TO LEAVE EQUAL DISTANCE AND EQUAL FORCE ON EACH LEG OF THE U-BOLT.
- 4.0 TEST
- 5.0 PACKAGING
- 5.1 PACKAGING SHALL MEET COMMSCOPE REQUIREMENTS PER DOCUMENT IS-PL-3005
- 5.2 PRINTED DOCUMENT TO BE PLACED INSIDE POLYBAG AND THEN IN SHIPPING CONTAINER
- 5.3 EXTRA HARDWARE MAY BE SUPPLIED, BAGGED AND SHIPPED



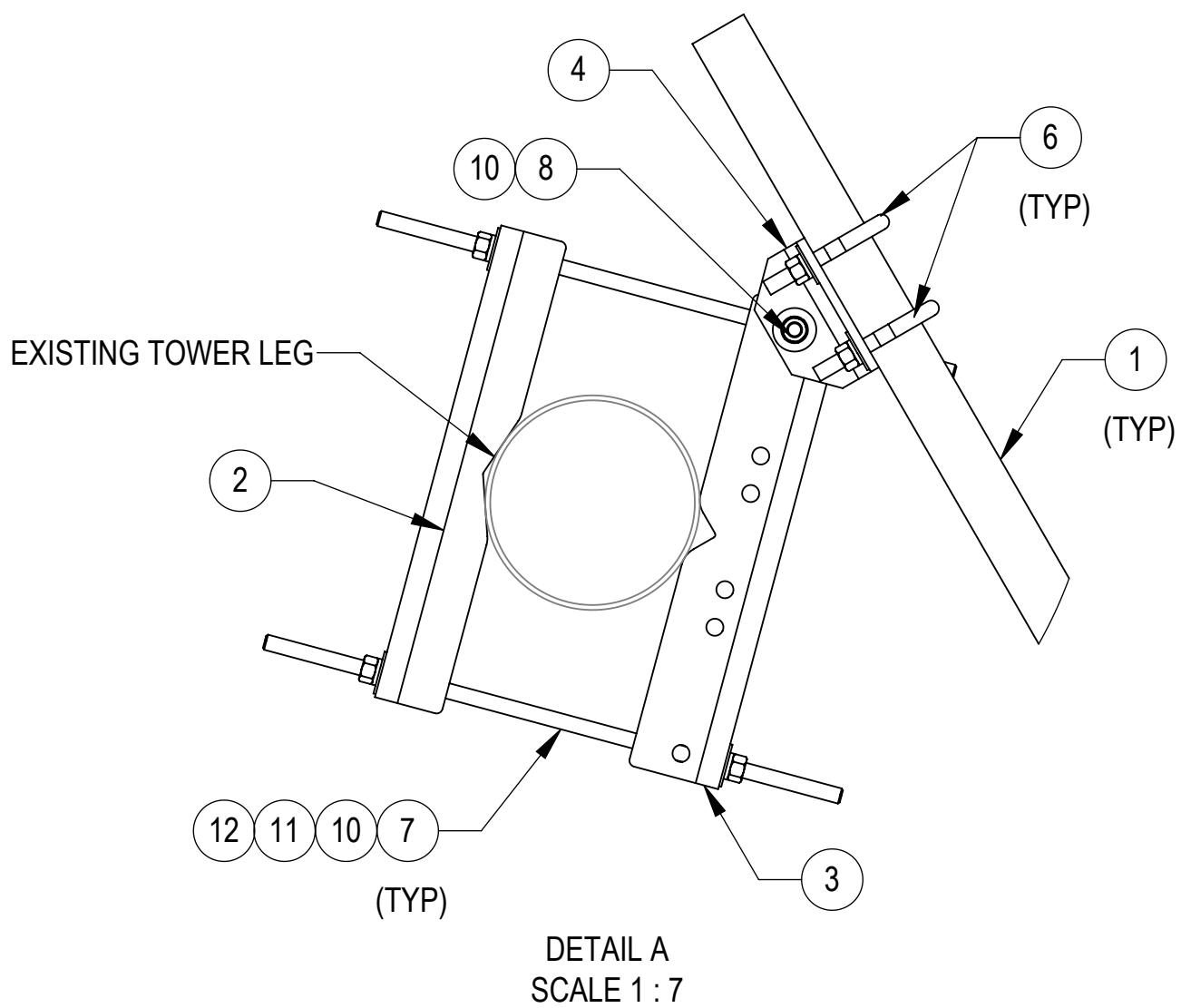
PLAN VIEW  
TIE BACK ASSEMBLY ADAPTER FOR ANGLE





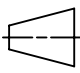
PLAN VIEW  
TIE BACK ASSEMBLY WITH ADAPTER FOR PIPE

DENSITY		lbs/in³
MASS	103.99	lbs
VOLUME	370.13	in³
SURFACE AREA	3236.89	in²
HEIGHT	(20.0")	
LENGTH	(120.0")	
WIDTH	(12.0")	

© 2024 CommScope, Inc. Confidential

REVISIONS			
REV.	DESCRIPTION	DATE	APPROVED
A	INITIAL RELEASE	LS1146 30MAY24	XK1001 40196865CMO
B	MT-382-24 (ITEM 7) WAS MT-382-18	YC1059 06FEB25	BCROSS 50101220AMO



COMMSCOPE, INC. OF NORTH CAROLINA										
TOLERANCES					SAP MATERIAL MASTER					
1 PLACE .X[X] ± 0.2[6.3]		3 PLACE .XXX[X] ± 0.060[1.5]			VZWSMART-SFK1L					
2 PLACE .XX[X] ± 0.12[3.0]		ANGLES ± 2°								
FINISH					MATERIAL					
UNLESS OTHERWISE SPECIFIED DIMENSIONS ARE IN INCHES INTERPRET PER ANSI Y 14.5M-1994		NAME	DATE	TITLE						
	CE	LS1146	30MAY24	TIE BACK ASSEMBLY FOR LARGER LEG						
	RW	YC1059	02/10/2025							
										
	AD	YMENG	03/11/2025	SCALE		DOCUMENT NO.				
	RE	YMENG	03/31/2025	1:15		VZWSMART-SFK1L				
	ECN 50101220AMO									
SIZE	Auth Group		INSL	MODEL			DRAWING			SHEET 1 OF 2
C				VERSION	STATUS	REVISION	VERSION	STATUS	REVISION	
				01	RE	B	01	RE	B	

D

C

B

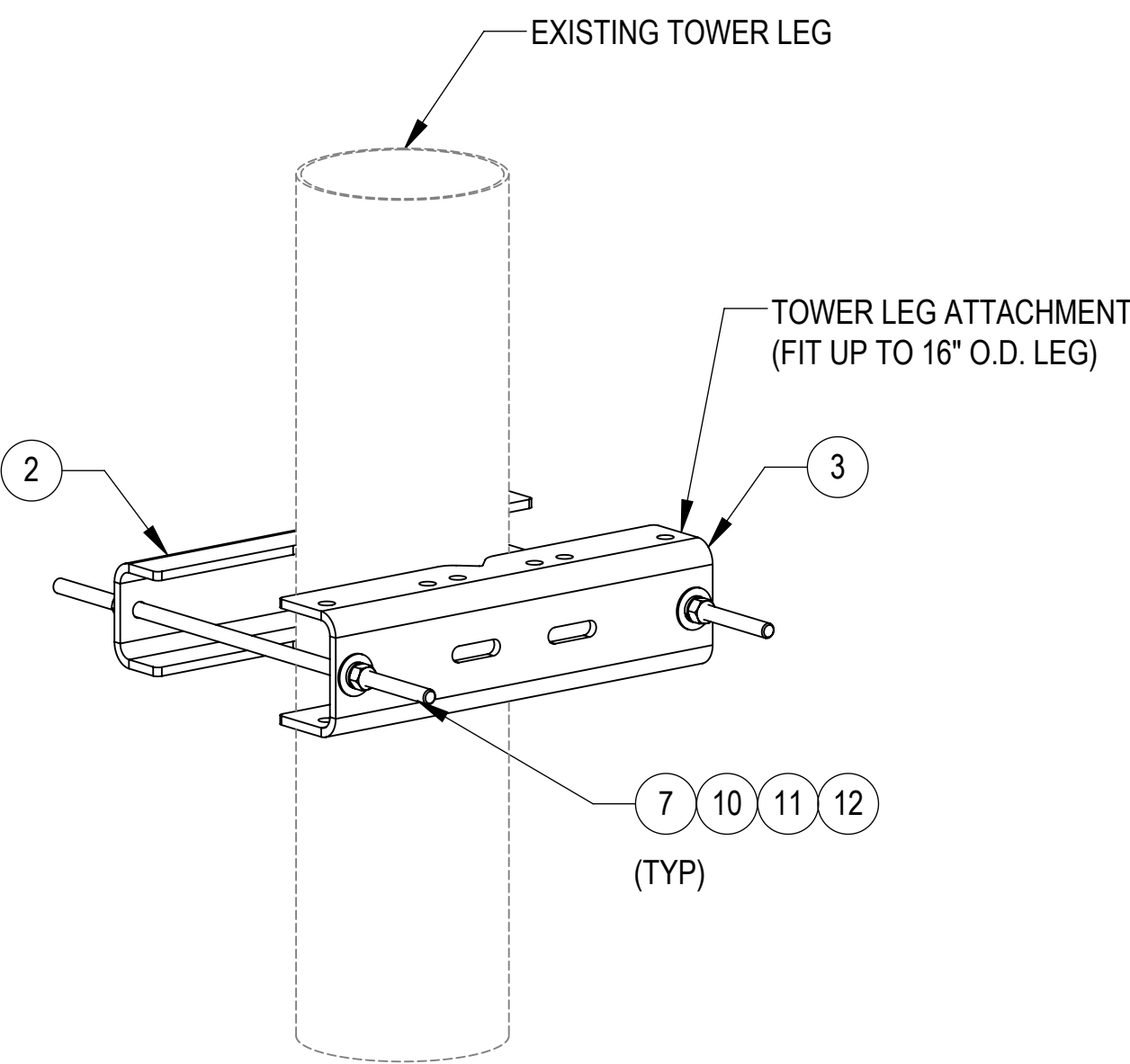
A

D

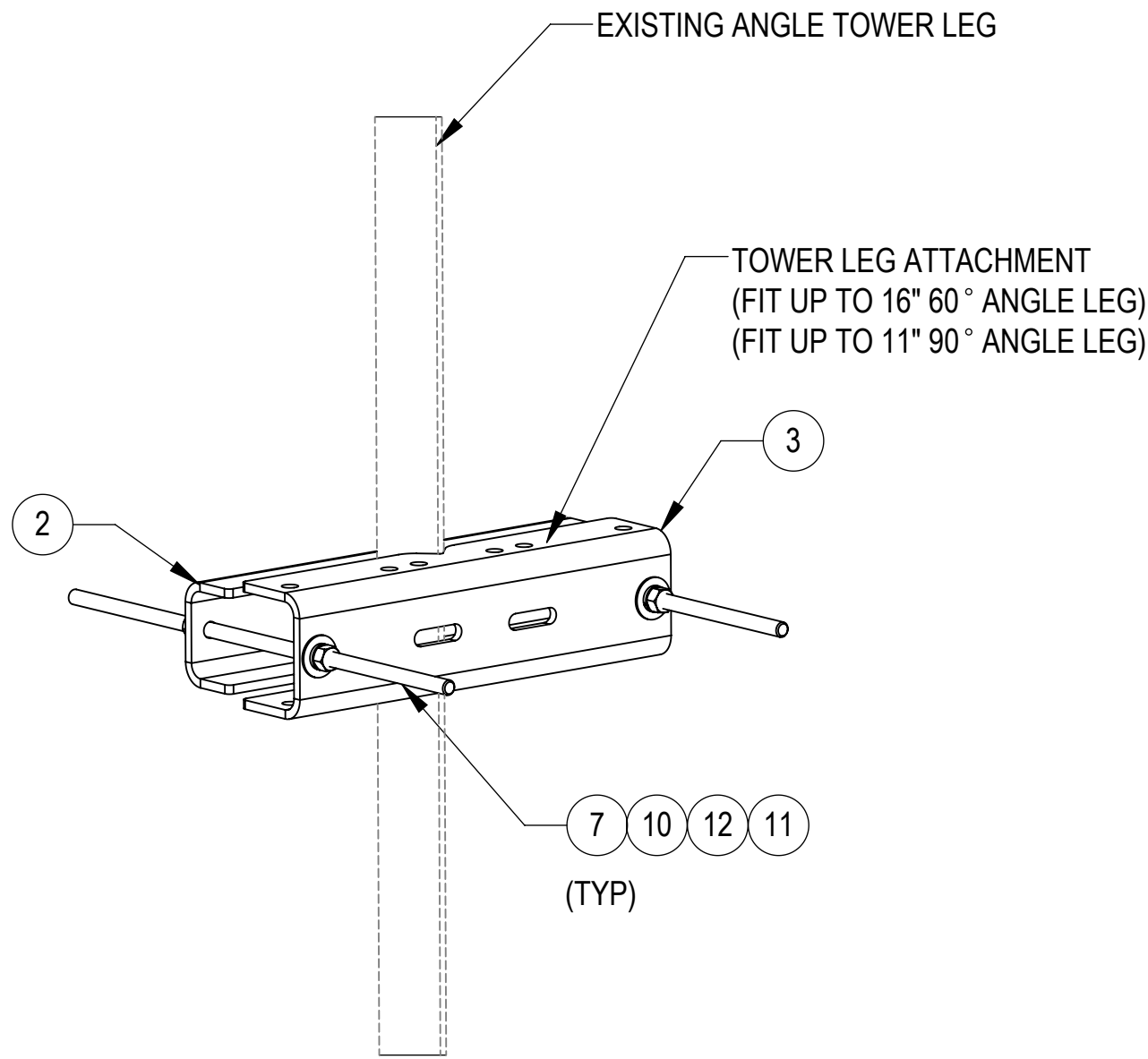
C

B

A



ROUND TOWER LEG ATTACHMENT DETAIL



ANGLE TOWER LEG ATTACHMENT DETAIL

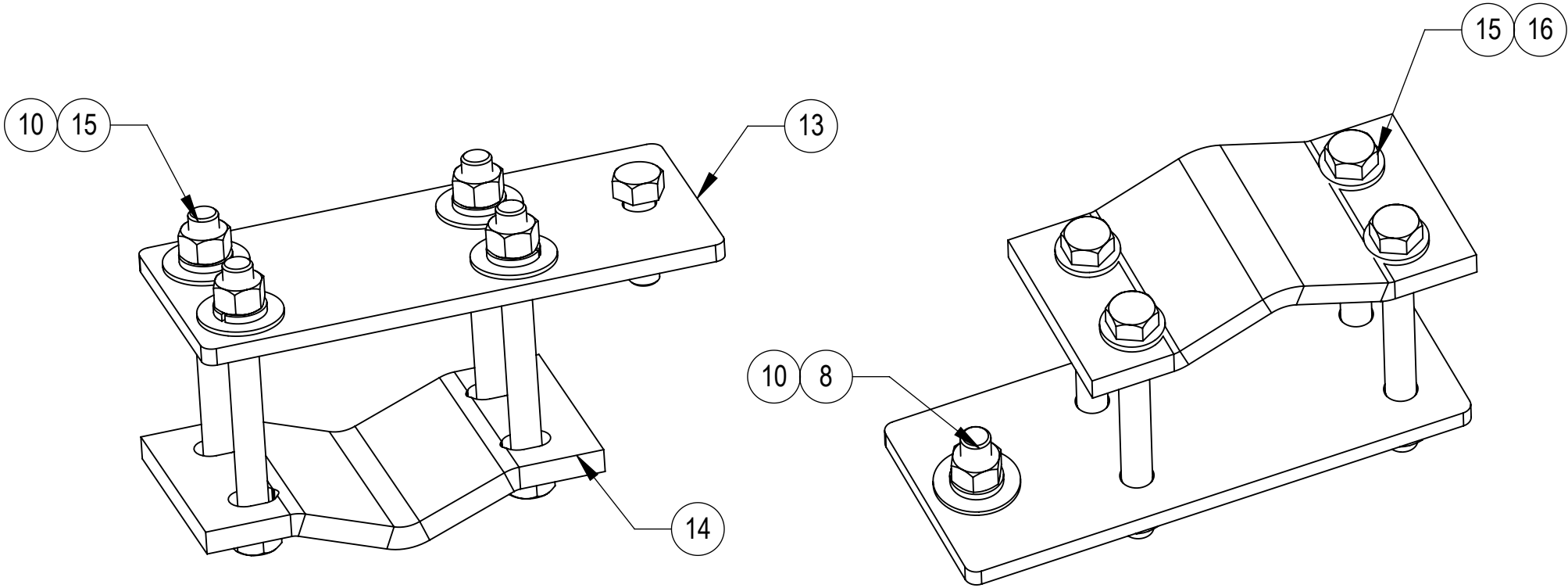
COMPONENT PART NUMBERS PROVIDED FOR ASSEMBLY PURPOSES;  
INDIVIDUAL COMPONENTS MAY BE SHIPPED AS PARTS WITHIN AN INCLUDED KIT.

THE BOM OF TIE BACK ASSEMBLY ADAPTER FOR ANGLE


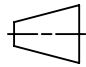
ITEM NO.	PART NUMBER	DESCRIPTION	QTY.	WEIGHT	NOTE NO.
1	PST2375-10	PIPE, TIE BACK	1	36.63 LBS	
2	BP8625-19625-00	BENT PLATE, .375 X 4.38 X 19.63	1	17.18 LBS	
3	BP11125-19625-00	BENT PLATE, .375 X 5.25 X 19.63	1	22.61 LBS	
4	MTC4104-0014	BENT PLATE, .375 X 6 X 6.88	1	5.24 LBS	
5	MTC4104-0031	BENT PLATE	1	1.15 LBS	
6	GUB-53050	5/8" X 3" X 5" GALV U-BOLT KIT	2	1.09 LBS	INCLUDES U-BOLT, FLAT WASHERS, LOCK WASHERS AND NUTS
7	MT-382-24	5/8" X 24" GALV THREADED ROD	2	2.07 LBS	
8	GB-0520A	5/8" X 2" GALV BOLT KIT (A325)	2	0.26 LBS	INCLUDES BOLT, LOCK WASHER AND NUT
9	GB-0542A	5/8" X 4-1/4" GALV BOLT KIT	1	0.46 LBS	INCLUDES BOLT, LOCK WASHER AND NUT
10	GWF-05	5/8" GALV FLAT WASHER, 1.7OD	7	0.06 LBS	
11	GWL-05	5/8" GALV LOCK WASHER	4	0.03 LBS	
12	GN-05	5/8" GALV HEX NUT	4	0.08 LBS	

THE BOM OF TIE BACK ASSEMBLY ADAPTER FOR PIPE

ITEM NO.	PART NUMBER	DESCRIPTION	QTY.	WEIGHT	NOTE NO.
1	PST2375-10	PIPE, TIE BACK	1	36.63 LBS	
2	BP8625-19625-00	BENT PLATE, .375 X 4.38 X 19.63	1	17.18 LBS	
3	BP11125-19625-00	BENT PLATE, .375 X 5.25 X 19.63	1	22.61 LBS	
4	MTC4104-0014	BENT PLATE, .375 X 6 X 6.88	1	5.24 LBS	
5	MTC4104-0031	BENT PLATE	1	1.15 LBS	
6	GUB-53050	5/8" X 3" X 5" GALV U-BOLT KIT	2	1.09 LBS	INCLUDES U-BOLT, FLAT WASHERS, LOCK WASHERS AND NUTS
7	MT-382-24	5/8" X 24" GALV THREADED ROD	2	2.07 LBS	
8	GB-0520A	5/8" X 2" GALV BOLT KIT (A325)	2	0.26 LBS	INCLUDES BOLT, LOCK WASHER AND NUT
9	GB-0542A	5/8" X 4-1/4" GALV BOLT KIT	1	0.46 LBS	INCLUDES BOLT, LOCK WASHER AND NUT
10	GWF-05	5/8" GALV FLAT WASHER, 1.7OD	11	0.06 LBS	
11	GWL-05	5/8" GALV LOCK WASHER	4	0.03 LBS	
12	GN-05	5/8" GALV HEX NUT	4	0.08 LBS	
13	PL375-4511	PLATE, TIE BACK MOUNTING	1	5.07 LBS	
14	V-CLAMP	CLAMP, 4 SLOT V	1	4.90 LBS	
15	GB-05605FT	5/8" X 6" GALV BOLT KIT FULL THREAD	4	0.59 LBS	INCLUDES BOLT, LOCK WASHER AND NUT
16	GWF05A	GALV FLAT WASHER HARDENED 5/8", 1.3OD	4	0.04 LBS	



ADAPTER FOR PIPE CONNECTION

COMMScope, INC. OF NORTH CAROLINA					
TITLE TIE BACK ASSEMBLY FOR LARGER LEG					
SIZE C	SCALE 1:7	DOCUMENT NO. VZWSMART-SFK1L			
 		DRAWING			SHEET 2 OF 2
		VERSION 01	STATUS RE	REVISION B	