

2CPX208R-V3



4-port multibeam antenna, 4x 790–960 MHz, 2x 38° HPBW, 2x RET with manual override.

- Integrated Internal Remote Electrical Tilt (RET), with independent control of electrical tilt with manual override on all arrays
- Single panel design supporting two separate beams perfectly optimized at horizontal pointing angles of +27 degrees and –27 degrees from boresight

OBSOLETE

This product was discontinued on: November 30, 2023

General Specifications

Antenna Type	Multibeam
Band	Single band
Color	Light Gray (RAL 7035)
Grounding Type	RF connector inner conductor and body grounded to reflector and mounting bracket
Performance Note	Outdoor usage
Radome Material	Polyester fiberglass pultrusion
Radiator Material	Low loss circuit board
Reflector Material	Aluminum
RF Connector Interface	7-16 DIN Female
RF Connector Location	Bottom
RF Connector Quantity, low band	4
RF Connector Quantity, total	4

Remote Electrical Tilt (RET) Information

RET Interface	8-pin DIN Female 8-pin DIN Male
RET Interface, quantity	1 female 1 male
Input Voltage	10–30 Vdc
Internal RET	Low band (2)
Power Consumption, idle state, maximum	2 W
Power Consumption, normal conditions, maximum	13 W

2CPX208R-V3

Protocol 3GPP/AISG 2.0 (Single RET)

Dimensions

Width 504 mm | 19.843 in

Depth 118 mm | 4.646 in

Length 2090 mm | 82.284 in

Net Weight, without mounting kit 32.5 kg | 71.65 lb

Electrical Specifications

Impedance 50 ohm

Operating Frequency Band 790 – 960 MHz

Polarization $\pm 45^\circ$

Electrical Specifications

Frequency Band, MHz	790–890	890–960
Gain, dBi	18.1	18.6
Beam Centers, Horizontal, degrees	± 27	± 27
Beamwidth, Horizontal, degrees	40	35
Beamwidth, Vertical, degrees	10	9.1
Beam Tilt, degrees	0–10	0–10
USLS (First Lobe), dB	18	18
Null Fill, dB	-22	-22
Front-to-Back Ratio at 180°, dB	32	31
Front-to-Back Ratio, Copolarization 180° \pm 30°, dB	26	23
Isolation, Same Beam, dB	25	25
VSWR Return loss, dB	1.29 18.0	1.29 18.0
PIM, 3rd Order, 2 x 20 W, dBc	-150	-150
Input Power per Port, maximum, watts	300	300

Electrical Specifications, BASTA

Frequency Band, MHz	790–890	890–960
Gain by all Beam Tilts, average, dBi	17.8	18.3
Gain by all Beam Tilts Tolerance, dB	± 0.4	± 0.3
Gain by Beam Tilt, average, dBi	0° 17.9 5° 17.9 10° 17.8	0° 18.4 5° 18.4 10° 18.1

2CPX208R-V3

Beamwidth, Horizontal Tolerance, degrees	±2.3	±2.2
Beamwidth, Vertical Tolerance, degrees	±0.5	±0.4
USLS, beampeak to 20° above beampeak, dB	21	22
Front-to-Back Total Power at 180° ± 30°, dB	23	20
CPR at Boresight, dB	23	21
CPR at Sector, dB	12	7

Mechanical Specifications

Wind Loading @ Velocity, frontal	1,352.0 N @ 150 km/h (303.9 lbf @ 150 km/h)
Wind Loading @ Velocity, lateral	228.0 N @ 150 km/h (51.3 lbf @ 150 km/h)
Wind Loading @ Velocity, rear	1,379.0 N @ 150 km/h (310.0 lbf @ 150 km/h)
Wind Speed, maximum	200 km/h (124 mph)

Packaging and Weights

Width, packed	593 mm 23.346 in
Depth, packed	209 mm 8.228 in
Length, packed	2229 mm 87.756 in
Weight, gross	45.5 kg 100.31 lb

Regulatory Compliance/Certifications

Agency	Classification
CE	Compliant with the relevant CE product directives
CHINA-ROHS	Above maximum concentration value
ISO 9001:2015	Designed, manufactured and/or distributed under this quality management system
ROHS	Compliant/Exempted
UK-ROHS	Compliant/Exempted



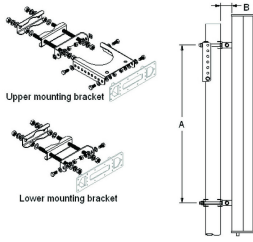
Included Products

T-029-GL-E	-	Adjustable Tilt Pipe Mounting Kit for 2.362"-4.5" (60-115mm) OD round members for panel antennas. Includes 2 clamp sets.
------------	---	--

* Footnotes

Performance Note	Severe environmental conditions may degrade optimum performance
-------------------------	---

T-029-GL-E



Adjustable Tilt Pipe Mounting Kit for 2.362"-4.5" (60-115mm) OD round members for panel antennas. Includes 2 clamp sets.

Product Classification

Product Type Adjustable tilt mounting kit

General Specifications

Application Outdoor

Color Silver

Dimensions

Compatible Length, maximum 2850 mm | 112.205 in

Compatible Length, minimum 1500 mm | 59.055 in

Compatible Diameter, maximum 115 mm | 4.528 in

Compatible Diameter, minimum 60 mm | 2.362 in

Antenna-to-Pipe Distance 85 mm | 3.346 in

Bracket-to-Bracket Distance 1400 mm | 55.118 in

Weight, net 6 kg | 13.228 lb

Material Specifications

Material Type Galvanized steel

Mechanical Specifications

Mechanical Tilt 0°-8°

Packaging and Weights

Included Brackets | Hardware

Packaging quantity 1

Regulatory Compliance/Certifications

Agency	Classification
CE	Compliant with the relevant CE product directives

T-029-GL-E

CHINA-ROHS	Below maximum concentration value
ISO 9001:2015	Designed, manufactured and/or distributed under this quality management system
REACH-SVHC	Compliant as per SVHC revision on www.commscope.com/ProductCompliance
ROHS	Compliant
UK-ROHS	Compliant

