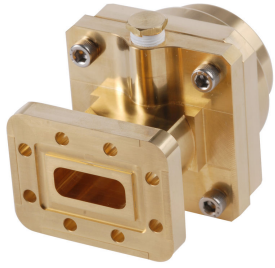


190SE



Fixed-tuned CPR90G for elliptical waveguide 90

Product Classification

Product Type Elliptical waveguide connector

General Specifications

Attachment Method Tab-flare | Tool-flare

Body Style Straight, fixed-tuned

Inner Contact Plating Unplated

Interface CPR90G

Outer Contact Plating Unplated

Pressurizable Yes

Dimensions

Width 72.39 mm | 2.85 in

Length 80.772 mm | 3.18 in

Transition Length 46.228 mm | 1.82 in

Waveguide Size WR90 | WG16 | R100

Electrical Specifications

Insertion Loss, typical 0.01 dB

Operating Frequency Band 10.2 – 11.7 GHz

Peak Power at Frequency, maximum 44.90 kW @ 11.20 GHz

Material Specifications

Material Type Brass

190SE

Environmental Specifications

Operating Temperature -55 °C to +85 °C (-67 °F to +185 °F)

Storage Temperature -55 °C to +85 °C (-67 °F to +185 °F)

Packaging and Weights

Weight, net 1 kg | 2.205 lb

Regulatory Compliance/Certifications

Agency

Classification

CHINA-ROHS

Above maximum concentration value

ISO 9001:2015

Designed, manufactured and/or distributed under this quality management system

REACH-SVHC

Compliant as per SVHC revision on www.commscope.com/ProductCompliance

ROHS

Compliant/Exempted

UK-ROHS

Compliant/Exempted



* Footnotes

Insertion Loss, typical $0.05\sqrt{\text{freq}}$ (GHz) (not applicable for elliptical waveguide)