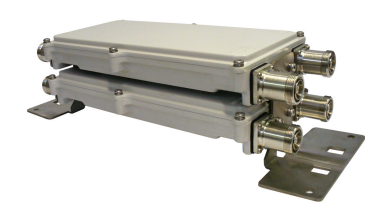


E11F01P37



Twin Diplexer, DCS 1800/UMTS/WiMAX/LTE, dc pass on 1710–2180 MHz port

OBSOLETE

This product was discontinued on: December 30, 2024

Replaced By:

E14F06P48 Twin Diplexer, 1350-2200 / 2300-2700 MHz, dc bypass all ports, 4.3-10 connectors

Product Classification

Product Type Diplexer

General Specifications

Product Family CBC1726old

Color Gray

Modularity 2-Twin

Mounting Pole | Wall

Mounting Pipe Hardware Band clamps (2)

RF Connector Interface 7-16 DIN Female

RF Connector Interface Body Style Long neck

Dimensions

Height 300 mm | 11.811 in

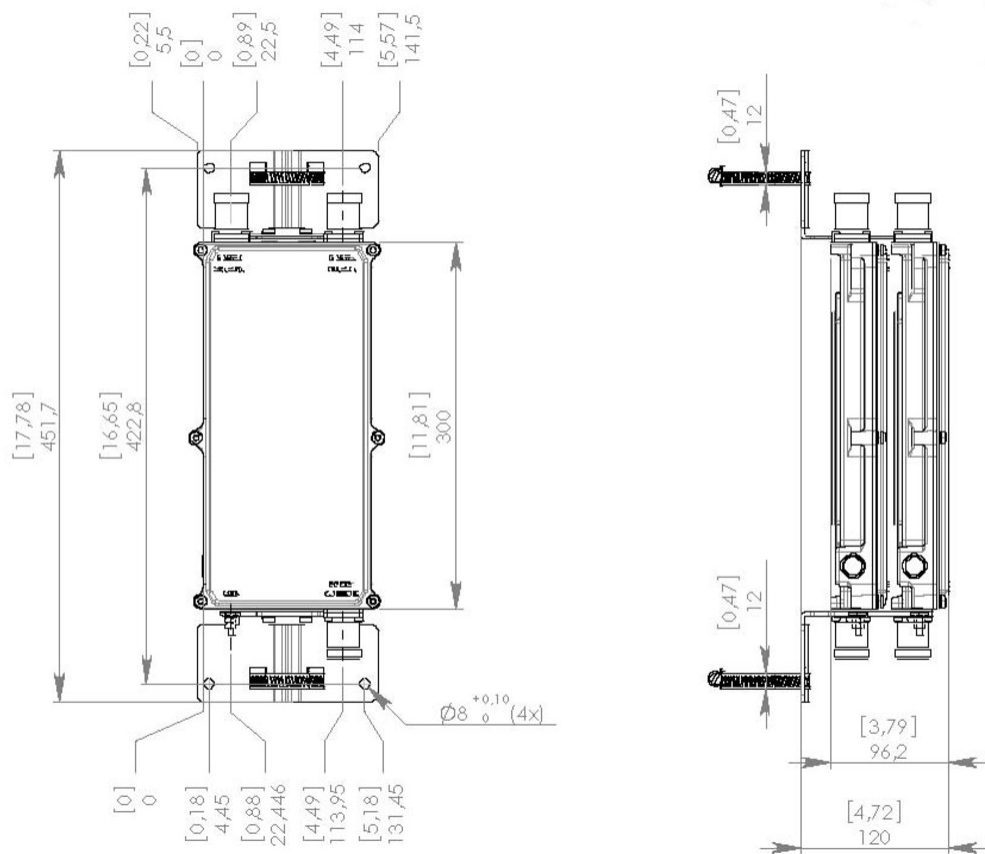
Width 136 mm | 5.354 in

Depth 96.2 mm | 3.787 in

Ground Screw Diameter 6 mm | 0.236 in

Mounting Pipe Diameter Range 40–160 mm

Outline Drawing



Electrical Specifications

Impedance	50 ohm
License Band, Band Pass	AWS 1700 DCS 1800 IMT 2100 IMT 2600 PCS 1900

Electrical Specifications, dc Power/Alarm

dc/AISG Pass-through, combiner	Branch 1
dc/AISG Pass-through, demultiplexer	Branch 1
Lightning Surge Current	3 kA
Lightning Surge Current Waveform	10/350 waveform

Electrical Specifications

Sub-module	1 2	1 2
Branch	1	2
Port Designation	PORT 2 1710-2180	PORT 1 2400-2700

E11F01P37

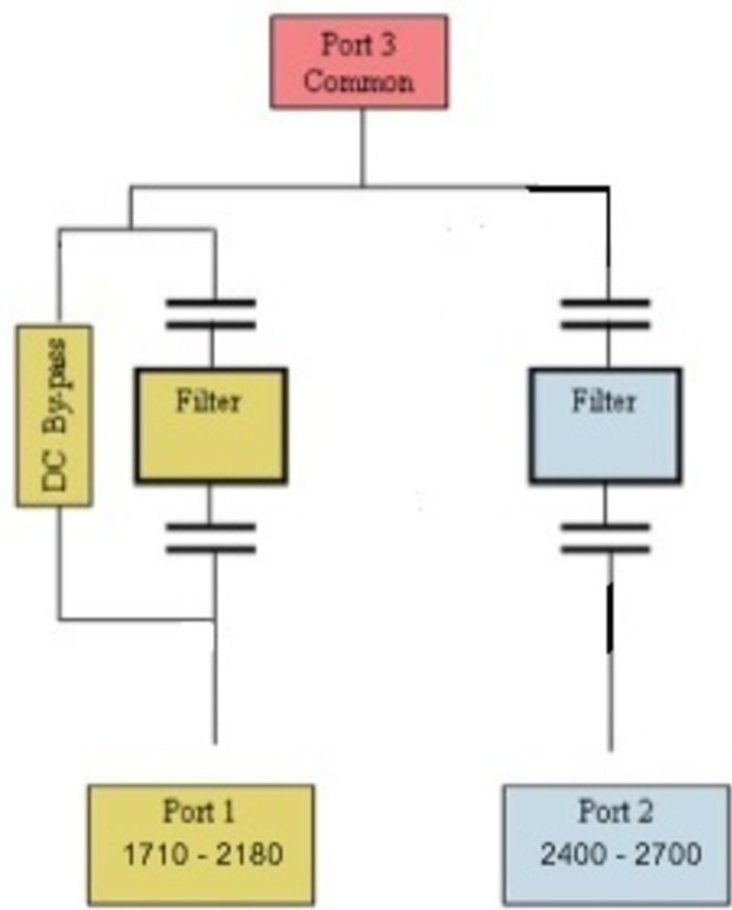
License Band	AWS 1700, Band Pass	IMT 2600, Band Pass
	DCS 1800, Band Pass	
	IMT 2100, Band Pass	
	PCS 1900, Band Pass	

Electrical Specifications, Band Pass

Frequency Range, MHz	1710–2180	2400–2700
Insertion Loss, typical, dB	0.25	0.3
Return Loss, minimum, dB	19	19
Isolation, minimum, dB	50	50
3rd Order PIM, typical, dBc	-160	-160
3rd Order PIM Test Method	Two +43 dBm carriers	Two +43 dBm carriers

E11F01P37

Block Diagram



Environmental Specifications

Operating Temperature	-40 °C to +60 °C (-40 °F to +140 °F)
Relative Humidity	Up to 100%
Corrosion Test Method	IEC 60068-2-11, 30 days
Ingress Protection Test Method	IEC 60529:2001, IP67

Packaging and Weights

Included	Mounting hardware
Volume	3.8 L
Weight, net	9 kg 19.842 lb

