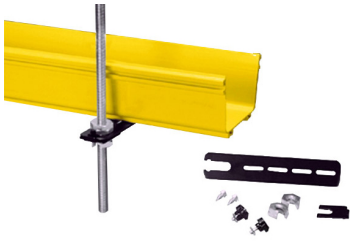


FGS-HETR-1/2



FiberGuide® Existing Thread Rod, 1/2in for 2x6, 4x4, 4x6in Systems

Product Classification

Regional Availability	Asia Australia/New Zealand EMEA Latin America North America
Portfolio	CommScope®
Product Type	Support mounting kit
Product Brand	FiberGuide®
Product Series	FGS

General Specifications

Color	Black
Orientation	Horizontal
Section Type	Bracket
Bracket Type	Cantilever
Bracket Installation Type	Existing
Attachment Type	Threaded rod

Dimensions

Height	156 mm 6.142 in
Width	51 mm 2.008 in
Length	268 mm 10.551 in
Thread Size	1/2 in
System Dimensions	102 mm x 102 mm (4 in x 4 in) 102 mm x 152 mm (4 in x 6 in) 51 mm x 152 mm (2 in x 6 in)

Ordering Tree

FGS-HETR-1/2

FGS - HETR - ⁹ F - ¹⁰ 5/8

For Section Size

9	empty	4 x 4 in, 4 x 6 in
	F	4 x 12 in

For Threaded Rod Size

10	1/2	1/2 in
	12MM	12 mm
	16MM	16 mm
	3/8	3/8 in
	5/8	5/8 in
	5/8-A	5/8 in, modified

Packaging and Weights

Weight, net 0.58 kg | 1.279 lb

Regulatory Compliance/Certifications

Agency

CHINA-ROHS
REACH-SVHC
ROHS
UK-ROHS

Classification

Below maximum concentration value
Compliant as per SVHC revision on www.commscope.com/ProductCompliance
Compliant
Compliant

