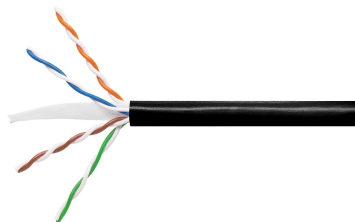


4286104/10 | 5NF4 BLACK REEL



5NF4 Category 5e U/UTP filled Cable, outdoor direct burial, black jacket, 4 pair count, 1000 ft (305 m) length, reel

Product Classification

Regional Availability	Latin America North America
Portfolio	CommScope®
Product Type	Twisted pair cable

General Specifications

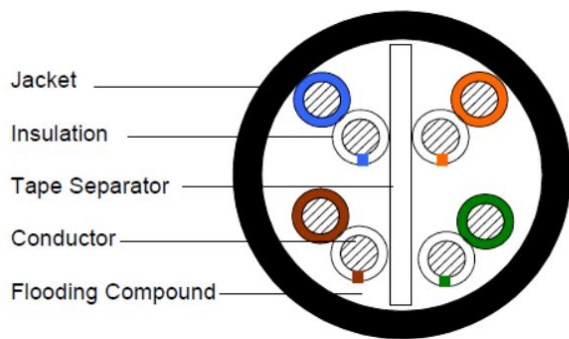
Product Number	5NF4
ANSI/TIA Category	5e
Cable Component Type	Horizontal
Cable Type	U/UTP (unshielded)
Conductor Type, singles	Solid
Conductors, quantity	8
Jacket Color	Black
Note	All electrical transmission tests include swept frequency measurements
Pairs, quantity	4
Transmission Standards	ANSI/TIA-568.2-D CENELEC EN 50288-3-1 ISO/IEC 11801 Class D

Dimensions

Cable Length	304.8 m 1000 ft
Diameter Over Jacket, nominal	6.096 mm 0.24 in
Jacket Thickness	0.762 mm 0.03 in
Conductor Gauge, singles	24 AWG

Cross Section Drawing

4286104/10 | 5NF4 BLACK REEL



Electrical Specifications

Characteristic Impedance	100 ohm
dc Resistance Unbalance, maximum	5 %
dc Resistance, maximum	9.38 ohms/100 m 2.859 ohms/100 ft
Delay Skew, maximum	45 ns
Dielectric Strength, minimum	1500 Vac 2500 Vdc
Mutual Capacitance at Frequency	4.6 nF/100 m @ 1 kHz
Nominal Velocity of Propagation (NVP)	65 %
Operating Frequency, maximum	350 MHz
Operating Voltage, maximum	80 V
Remote Powering	Fully complies with the recommendations set forth by IEEE 802.3bt (Type 4) for the safe delivery of power over LAN cable when installed according to ISO/IEC 14763-2, CENELEC EN 50174-1, CENELEC EN 50174-2 or TIA TSB-184-A
Safety Voltage Rating	300 V

4286104/10 | 5NF4 BLACK REEL

Electrical Cable Performance

CS	CommScope	NEXT	Near End Crosstalk (dB/100m)
STD	Refers to the standard value listed under Transmission Standards in the Electrical Specifications above	PSNEXT	Power Sum Near End Crosstalk (db/100m)
TYP	Typical Electrical Performance	ACRF	Attenuation to Crosstalk Ratio - Far End (dB/100m)
IL	Insertion Loss (dB/100m)	RL	Return Loss (dB)
ACR	Attenuation to Crosstalk Ratio (dB/100m)	ELTCTL	Equal Level Transverse Conversion Transfer Loss (dB/100m)
PSACR	Power Sum Attenuation to Crosstalk Ratio (dB/100m)		
PSACRF	Power Sum Attenuation to Crosstalk Ratio - Far End (dB/100m)		
TCL	Transverse Conversion Loss (dB/100m)		

Freq. MHz	IL			NEXT			ACR			PSNEXT			PSACR			ACRF			PSACRF			RL		
	CS	STD	TYP	CS	STD	TYP	CS	STD	TYP	CS	STD	TYP	CS	STD	TYP	CS	STD	TYP	CS	STD	TYP	CS	STD	TYP
1	2	2	1.8	70.3	65.3	87.9	68.3	63.3	86.1	68.3	62.3	86	66.3	60.3	84.2	67.8	63.8	81	65	60.8	79.8	20	20	31.5
4	3.9	4.1	3.5	61.3	56.3	79	57.3	52.2	75.5	59.3	53.3	77	55.3	49.2	73.4	55.8	51.8	69	53.8	48.8	67.9	23.3	23	29.8
8	5.6	5.8	5	56.8	51.8	74	51.2	46	69	54.8	48.8	72	49.2	43	67	49.7	45.7	62.8	47.7	42.7	61.7	25	24.5	32.8
10	6.2	6.5	5.6	55.3	50.3	72.5	49.1	43.8	66.9	53.3	47.3	70.7	47.1	40.8	65.1	47.8	43.8	60.9	45.8	40.8	59.8	25.5	25	34.3
16	7.9	8.2	7.1	52.2	47.2	69.8	44.3	39	62.8	50.2	44.2	67.7	42.3	36	60.6	43.7	39.7	56.8	41.7	36.7	55.7	25.5	25	37.4
20	8.9	9.3	7.9	50.8	45.8	68.4	41.9	36.5	60.5	48.8	42.8	66.2	39.9	33.5	58.3	41.8	37.8	54.9	39.8	34.8	53.7	25.5	25	38.1
25	10	10.4	8.9	49.3	44.3	67.4	39.3	33.9	58.5	47.3	41.3	65.3	37.3	30.9	56.4	39.8	35.8	52.9	37.8	32.8	51.7	24.8	24.3	37.2
31.25	11.3	11.7	9.9	47.9	42.9	66.2	36.6	31.2	56.3	45.9	39.9	64.2	34.6	28.2	54.2	37.9	33.9	50.9	35.9	30.9	49.7	24.1	23.6	34.4
62.5	16.3	17	14.2	43.4	38.4	62.3	27.1	21.4	48.1	41.4	35.4	60.2	25.1	18.4	46	31.9	27.9	44.5	29.9	24.9	43.3	22	21.5	30.7
100	21	22	18.1	40.3	35.3	59.6	19.3	13.3	41.5	38.3	32.3	57.3	17.3	10.3	39.1	27.8	23.8	39.8	25.8	20.8	38.7	20.6	20.1	27.7
155	26.8		22.8	37.4		55.8	10.7		33	35.4		53.9	8.7		31.1	24		36.2	22		34.8	19.3		24.8
200	30.9		26.1	35.8		54.7	4.9		28.6	33.8		52.3	2.9		26.2	21.8		33.5	19.8		32.3	18.5		24
250	35		29.3	34.3		53.1	-0.7		23.7	32.3		50.9	-2.7		21.6	19.8		31.8	17.8		30.5	17.8		23.5
300	38.9		32.2	33.1		50.4	-5.8		18.1	31.1		48.3	-7.8		16.1	18.3		30.5	16.3		29.2	17.3		23.8
350	42.6		35	32.1		48.7	-10.4		13.6	30.1		46.7	-12.4		11.7	16.9		28.6	14.9		27.2	16.8		24.8

Material Specifications

Conductor Material	Bare copper
Insulation Material	Polyolefin
Jacket Material	PE

Mechanical Specifications

Pulling Tension, maximum	11.34 kg 25 lb
---------------------------------	------------------

Environmental Specifications

Installation temperature	-30 °C to +70 °C (-22 °F to +158 °F)
Operating Temperature	-40 °C to +70 °C (-40 °F to +158 °F)
Environmental Note	UV resistant for outdoor and/or direct burial installations
Environmental Space	Buried

4286104/10 | 5NF4 BLACK REEL

Packaging and Weights

Cable weight 41.118 kg/km | 27.63 lb/kft
Packaging Type Reel

Regulatory Compliance/Certifications

Agency	Classification
CHINA-ROHS	Below maximum concentration value
ISO 9001:2015	Designed, manufactured and/or distributed under this quality management system
REACH-SVHC	Compliant as per SVHC revision on www.commscope.com/ProductCompliance
ROHS	Compliant
UK-ROHS	Compliant

