

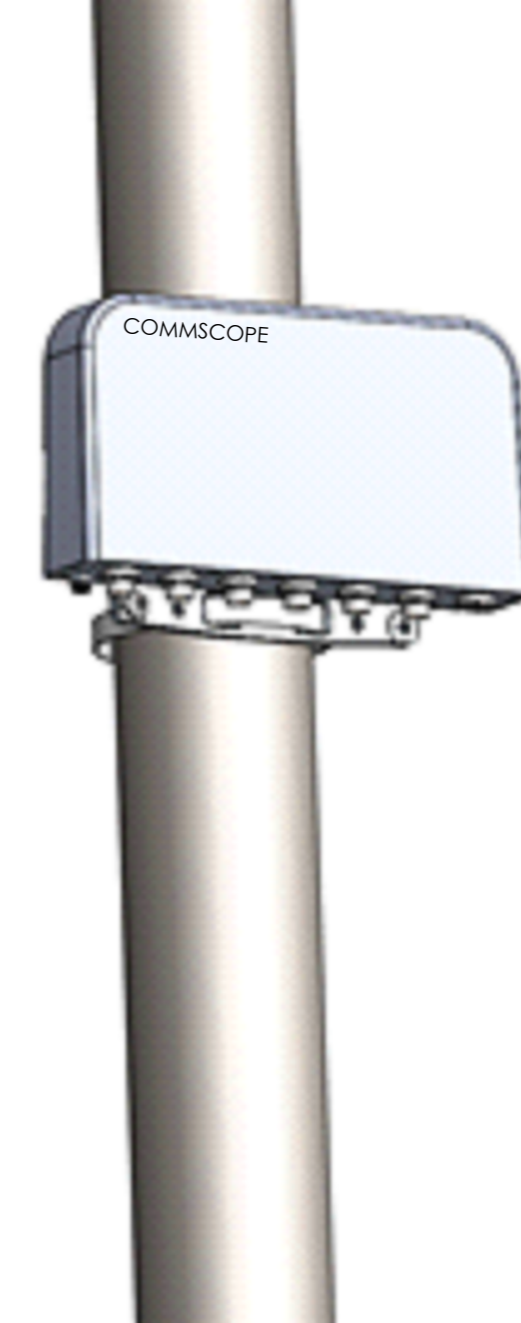
7837617 Revision A June 2019

ASH INSTALLATION GUIDE

Introduction

The CommScope ASH allows internal RET elements of multipoint antennas to be shared across multiple BTS/RRH controllers. The main features of CommScope ASH are:

- Supports up to six independent operators
- Works with all CommScope antennas utilizing internal RET systems
- No proprietary RET software required
- Supports up to 24 CommScope RETs when sharing between 2 or more operators
- Band assignments are configurable using PC tool
- Compliant to 3GPP/AISG 2.0
- Multi-RET and Single RET supported, configurable per operator port



1. Identify and Inspect parts.

The product includes the following parts:

- (1) Antenna Sharing Hub unit.
- (2) Mounting clamp.

2. Obtain tools and supplies.

The following items are required or recommended:

- (1) 8×200mm flat head screwdriver. (recommended torque 5N.m)
- (2) T27 screwdriver(recommended torque 11N.m)

3. Steps of using mounting clamp

1) *Unscrew the clamp.*



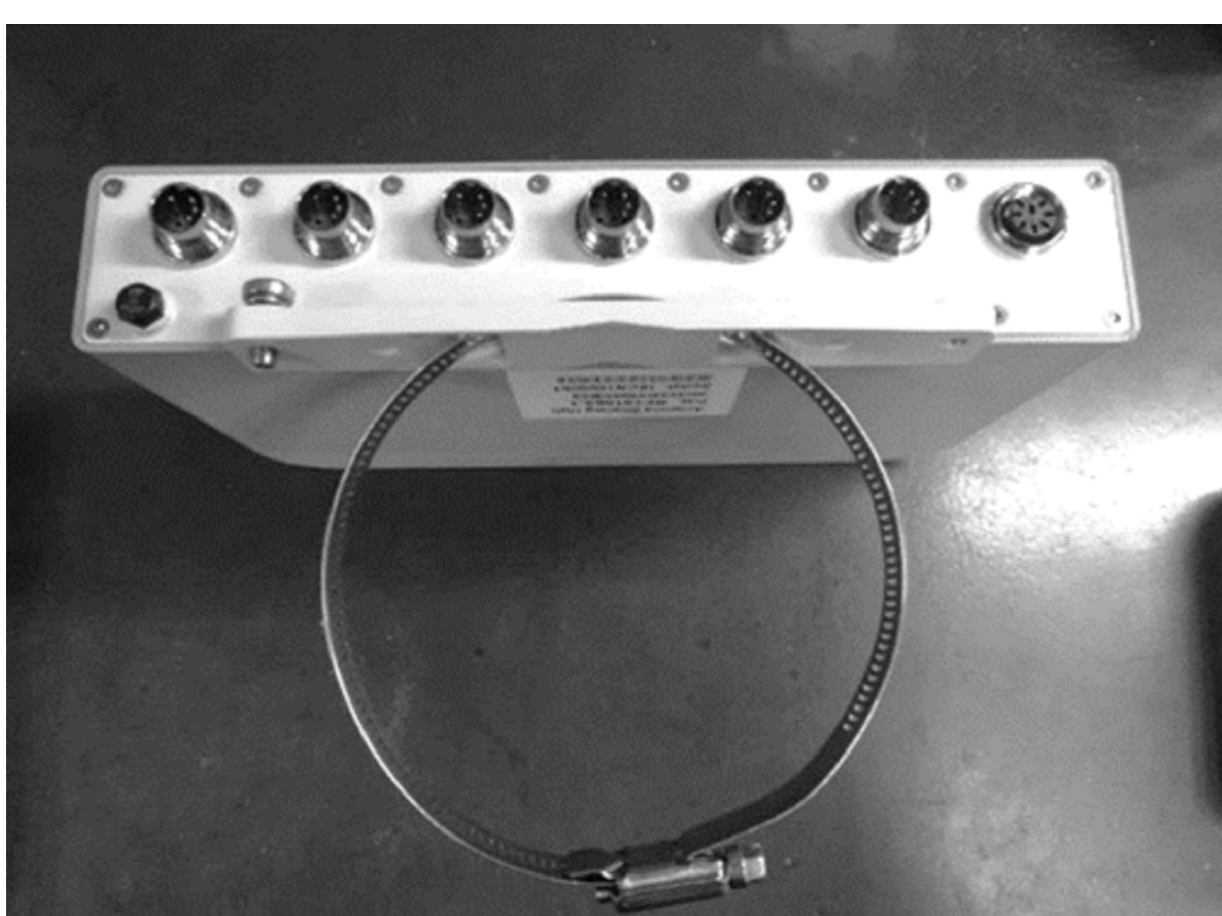
2) *Open the clamp and free the terminal of clamp.*



3) *Insert the clamp into mounting holes.*

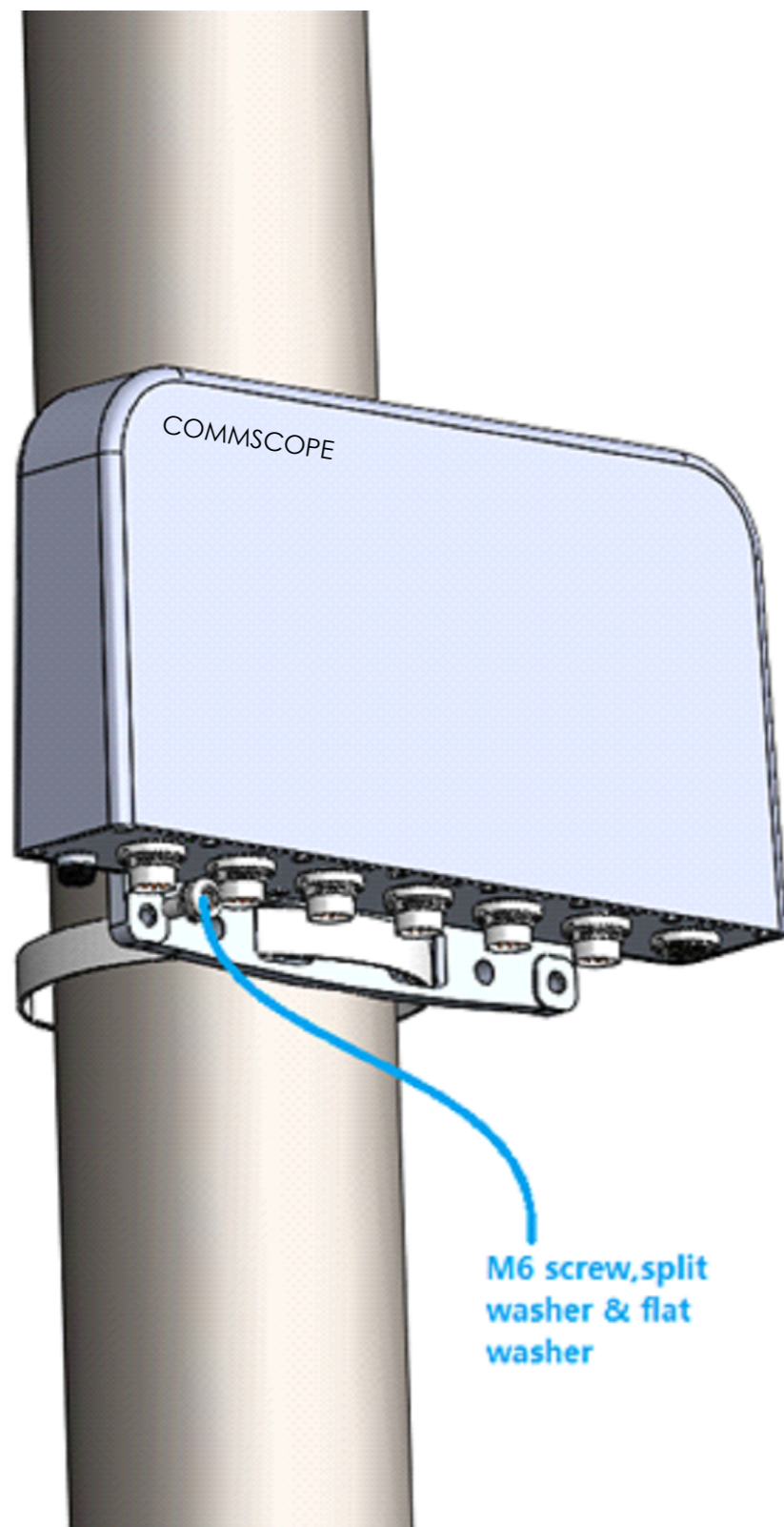


4) *Insert the free terminal of the clamp into lock and tighten the screw (along the band up to the required torque MAX 5NM while mounted on the pole) by means of a screwdriver.*



4. Mounting grounding cable

Unscrew the M6 screw, split washer & flat washer, mount the grounding cable ring, and then, tighten them with recommended torque 11NM.



SAFETY NOTICE

The installation, maintenance, or removal of an antenna requires qualified, experienced personnel. CommScope installation instructions are written for such installation personnel. Antenna systems should be inspected once a year by qualified personnel to verify proper installation, maintenance, and condition of equipment.

CommScope disclaims any liability or responsibility for the results of improper or unsafe installation practices.

It is recommended that transmit power be turned off when the field installation is performed. Follow all applicable safety precautions as shown on this page.



Do not install near power lines. Power lines, telephone lines, and guy wires look the same. Assume any wire or line can electrocute you.



Do not install on a wet or windy day or when lightning or thunder is in the area. Do not use metal ladder.



Wear shoes with rubber soles and heels. Wear protective clothing including a long-sleeved shirt and rubber gloves.