

Healthcare provider operations are becoming more complex and harder to manage.

**That's why CommScope networks enable connected care from core to edge.**

**HEALTHCARE TODAY**

**Internet of Medical Things**

**\$158 billion**

Estimated value of IoMT market in 2022

**Healthcare spending**

**10% of GDP**

Expenditure will not grow through 2023

**Data centers**

**20% on-premise**

Expected location for medical information, 2019–2022

**CHALLENGES**

**Capacity**

The number of wired and wireless network devices is growing exponentially. PoE is a requirement for many.

**Connectivity**

**Unification**

Complex facilities require streamlined ways to manage disparate systems spread across buildings and campuses.

**Security**

As healthcare data centers host sensitive information, security must be top of mind.

**Assurance**

**Compliance**

Adherence is critical when every circumstance is governed by regulations and lives rely on the network.

**Costs**

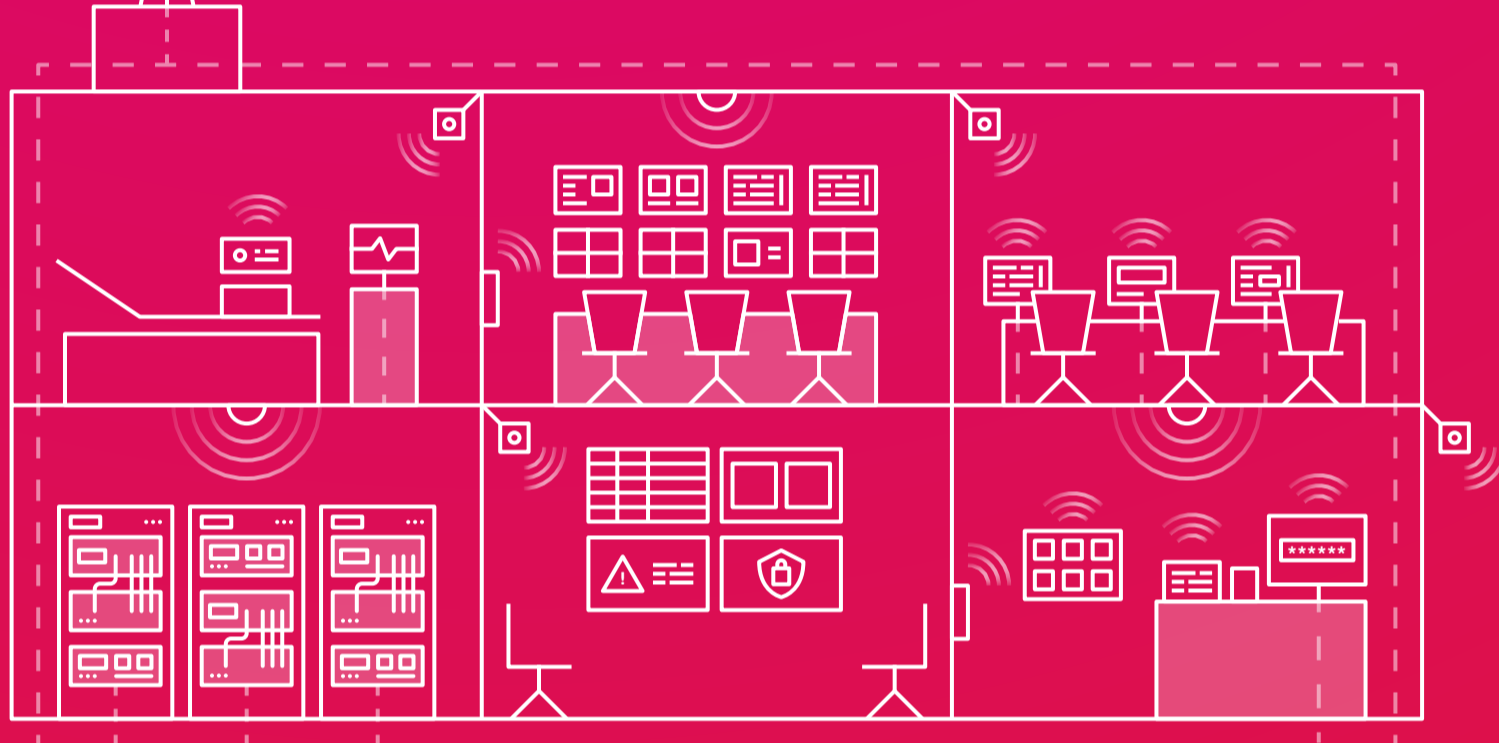
Spending is projected to remain steady even though demand is growing—healthcare operations require solutions that help optimize operational expenditure.

**Efficiency**

**Automation**

Key building systems are becoming more connected and more capable, but they require simpler, automated processes for monitoring and control.

**COMMSCOPE SOLUTIONS**



Enable IT and operational networks to coexist on a common platform

Centralize smart building capabilities on copper and fiber to connect and power systems

Hardware, software, and services that create a foundation for long-term network evolution

**Convergent networks**

**Streamlined infrastructure**

**Future-ready**

**Smart buildings**

**Automated infrastructure management**

**Unified management**

Facilitate IoT through universal connectivity in every room, on every floor, and across buildings

Real time, holistic view of the network and intrusions

Singular control interface for multiple discrete systems

**OUTCOMES**



Converged infrastructure empowers automated facility management by unifying controls for HVAC, power, security, and room access

**Connectivity**



Reliability, minimal downtime, and omnipresent connectivity through wired and wireless networks for patient bed alerts, nursing infant protection, and more



Unified monitoring of video security systems and card access strengthens building security processes

**Assurance**



Compliant with HIPAA, GDPR, HIMSS, and more, adhering to international and local regulations to simplify operations



Infrastructure that is ready for the new connected healthcare environment reduces the need to continually change hardware and improves business margins

**Efficiency**



CommScope's automated infrastructure management (AIM) in a health clinic helped reduce operational costs by 15% by streamlining control of HVAC systems

**Welcome to connected care from core to edge**

[See it in action](#)

**SEE REFERENCES**

Deloitte: 2019 Global Health Care Outlook <https://www2.deloitte.com/content/dam/Deloitte/global/Documents/Life-Sciences-Health-Care/gx-lshc-hc-outlook-2019.pdf>

Deloitte: 2020 Global Health Care Outlook <https://www2.deloitte.com/global/en/pages/life-sciences-and-healthcare/articles/global-health-care-sector-outlook.html>

Center for Connected Medicine: Digital Health Challenges and Opportunities <https://connectedmed.com/resources/top-of-mind-2019-interoperability-cybersecurity-telehealth/>