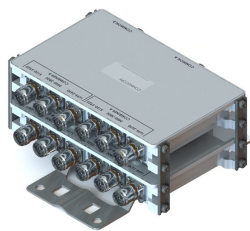


# CBC173558Q-43 | E14F60P02



## Quad Triplexer 1695-2690/3400-3800/5150-5925 MHz

- New Combining Solution for 3.5 and 5.8 GHz unlicensed Bands
- New 4.3-10 connectors for improved PIM performance and size reduction
- Quad configuration, 4x4 MIMO ready
- dc/AISG pass-through on low frequency ports

### Product Classification

**Product Type** Triplexer

### General Specifications

**Color** Gray

**Modularity** 4-Quad

**Mounting Pipe Hardware** Band clamps (2)

**RF Connector Interface** 4.3-10 Female

**RF Connector Interface Body Style** Long neck

### Dimensions

**Height** 225 mm | 8.858 in

**Width** 145 mm | 5.709 in

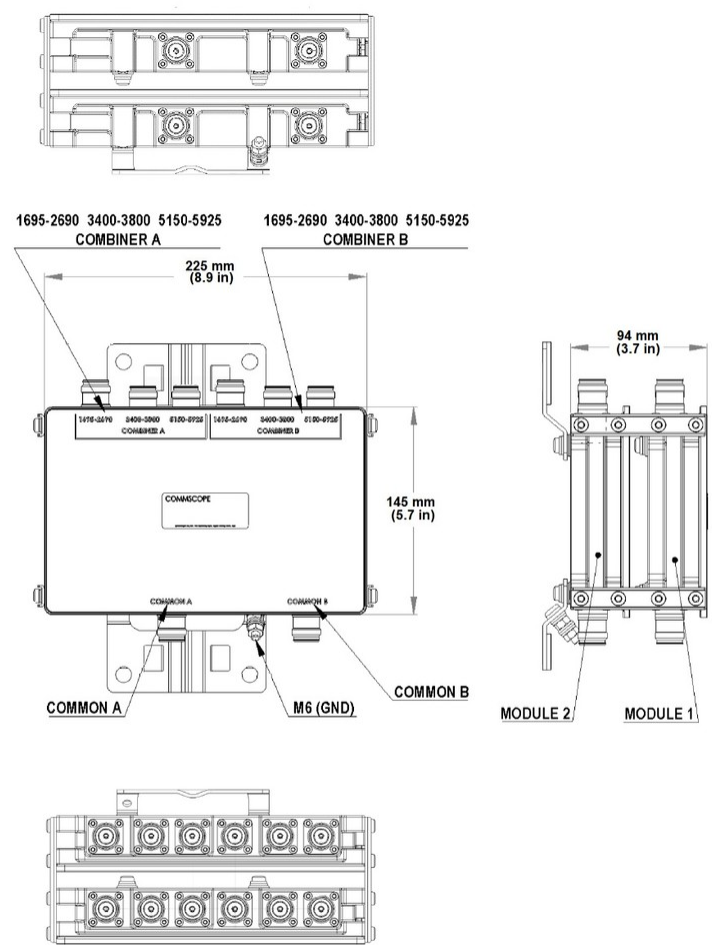
**Depth** 94 mm | 3.701 in

**Ground Screw Diameter** 6 mm | 0.236 in

**Mounting Pipe Diameter Range** 40–160 mm

### Outline Drawing

# CBC173558Q-43 | E14F60P02



## Electrical Specifications

Impedance	50 ohm
License Band, Band Pass	AWS 2000   DCS 1800   IMT 2100   IMT 2600   LAA 5000   PCS 1900   TDD 1900   TDD 2000   TDD 2300   TDD 2600   TDD 3500   TDD 5000   WCS 2300

## Electrical Specifications, Common Port

Composite Power, RMS	150 W
----------------------	-------

## Electrical Specifications, dc Power/Alarm

dc/AISG Pass-through Method	Factory set
dc/AISG Pass-through Path	Branch 1
Lightning Surge Current	5 kA

CBC173558Q-43 | E14F60P02

Lightning Surge Current Waveform8/20 waveform

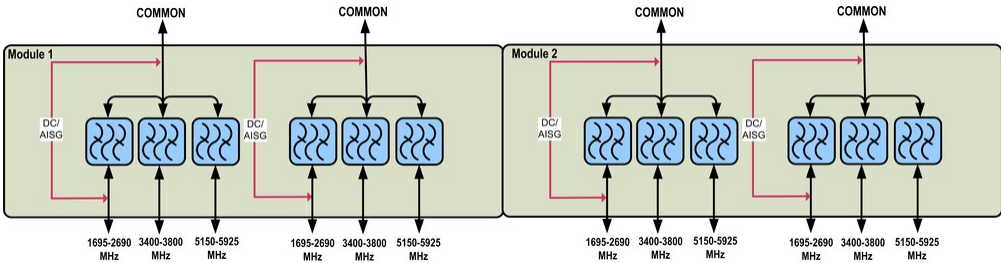
Electrical Specifications

Sub-module	1   2   3   4	1   2   3   4	1   2   3   4
Branch	1	2	3
Port Designation	1695-2690MHz	3400-3800MHz	5150-5925MHz
License Band	AWS 1700, Band Pass AWS 2000, Band Pass DCS 1800, Band Pass IMT 2100, Band Pass IMT 2600, Band Pass PCS 1900, Band Pass WCS 2300, Band Pass TDD 2000, Band Pass TDD 2300, Band Pass TDD 2600, Band Pass		TDD 5000, Band Pass LAA 5000, Band Pass

Electrical Specifications, Band Pass

Frequency Range, MHz	1695–2690	3400–3800	5150–5925
Insertion Loss, typical, dB	0.2	0.2	0.2
Total Group Delay, maximum, ns	2	4	4
Return Loss, typical, dB	20	20	20
Isolation, typical, dB	40	40	40
Input Power, RMS, maximum, W	100	10	10
Input Power, PEP, maximum, W	1000	100	100
3rd Order PIM, typical, dBc	-161	-161	-161
3rd Order PIM Test Method	2 x 20 W CW tones	2 x 20 W CW tones	2 x 20 W CW tones

Block Diagram



Environmental Specifications

Operating Temperature	-40 °C to +65 °C (-40 °F to +149 °F)
Relative Humidity	5%–100%

# CBC173558Q-43 | E14F60P02

---

<b>Corrosion Test Method</b>	IEC 60068-2-11, 30 days
<b>Ingress Protection Test Method</b>	IEC 60529:2001, IP67

## Packaging and Weights

<b>Included</b>	Mounting hardware
<b>Mounting Hardware Weight</b>	0.6 kg   1.323 lb
<b>Volume</b>	3.2 L
<b>Weight, without mounting hardware</b>	5.4 kg   11.905 lb

## Regulatory Compliance/Certifications

<b>Agency</b>	<b>Classification</b>
ISO 9001:2015	Designed, manufactured and/or distributed under this quality management system