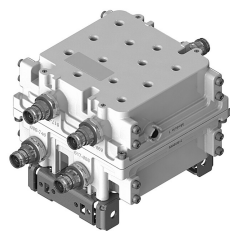


CBC6AE7LT-DS-43 | E14F05P67



Twin Diplexer, 600AE/700LABC, DC Sense, 4.3-10

- Automatic dc switching with dc sense
- Convertible mounting brackets
- Stackable in multiples with included hardware
- New 4.3-10 connectors for improved PIM performance and size reduction

OBSOLETE

This product was discontinued on: March 30, 2024

Replaced By:

E14F06P51

Quad Diplexer 617-698/703-960 MHz, 4.3-10 connectors

Product Classification

Product Type Diplexer

General Specifications

Color Gray

Common Port Label COMM

Modularity 2-Twin

Mounting Pole | Wall

Mounting Pipe Hardware Band clamps (2)

RF Connector Interface 4.3-10 Female

RF Connector Interface Body Style Long neck

Dimensions

Height 177 mm | 6.969 in

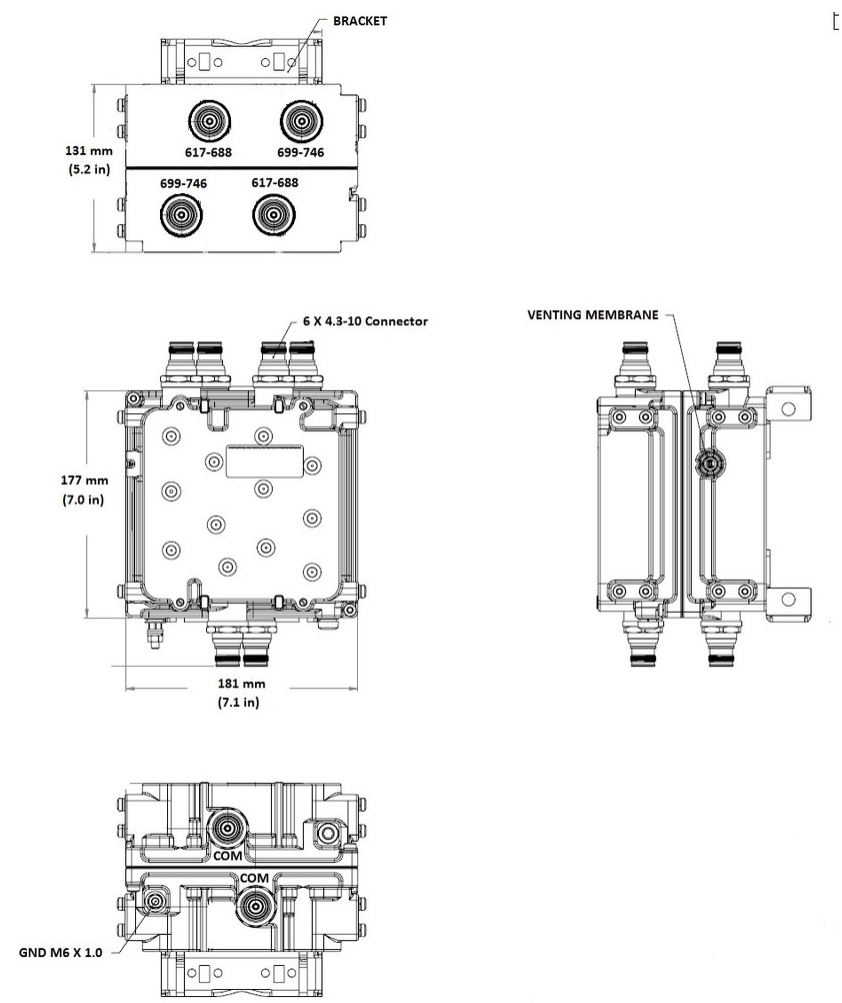
Width 181 mm | 7.126 in

Depth 131 mm | 5.157 in

Ground Screw Diameter 6 mm | 0.236 in

CBC6AE7LT-DS-43 | E14F05P67

Outline Drawing



Electrical Specifications

| | |
|-------------------------|---------------------------------------|
| Impedance | 50 ohm |
| License Band, Band Pass | CEL 850 USA 600 USA 700 USA 750 |

Electrical Specifications, Common Port

| | |
|----------------------|-------|
| Composite Power, PEP | 250 W |
|----------------------|-------|

Electrical Specifications, dc Power/Alarm

| | |
|-----------------------------|-----------------|
| dc/AISG Pass-through Method | Auto sensing |
| dc/AISG Pass-through Path | See logic table |
| Lightning Surge Current | 10 kA |

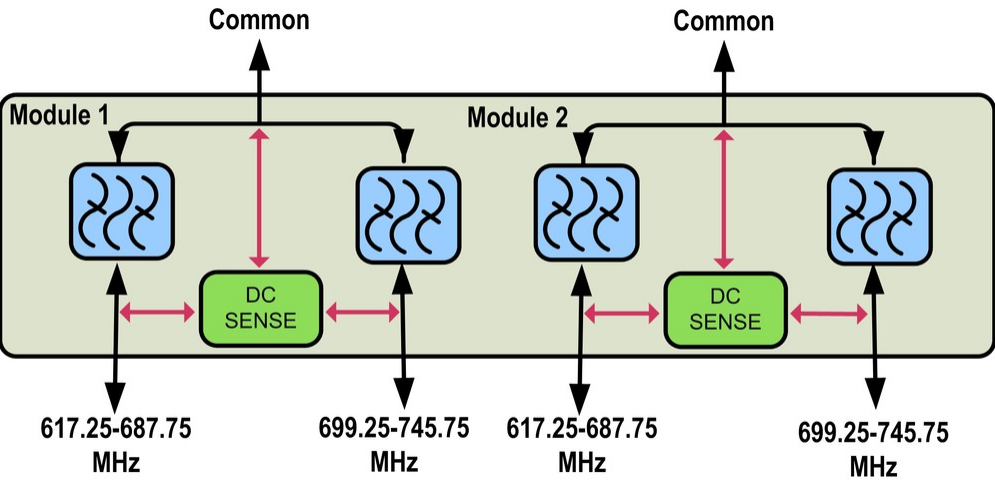
Electrical Specifications

| | | |
|--------------|--------------------|--------------------|
| Sub-module | 1 2 | 1 2 |
| Branch | 1 | 2 |
| License Band | USA 600, Band Pass | USA 700, Band Pass |

Electrical Specifications, Band Pass

| | | |
|--------------------------------|-------------------|-------------------|
| Frequency Range, MHz | 617.25–687.75 | 699.25–745.75 |
| Insertion Loss, maximum, dB | 0.45 | 0.45 |
| Insertion Loss, typical, dB | 0.2 | 0.2 |
| Total Group Delay, maximum, ns | 75 | 70 |
| Return Loss, typical, dB | 22 | 22 |
| Isolation, typical, dB | 53 | 48 |
| Input Power, RMS, maximum, W | 200 | 200 |
| Input Power, PEP, maximum, W | 2000 | 2000 |
| 3rd Order PIM, typical, dBc | -161 | -161 |
| 3rd Order PIM Test Method | 2 x 20 W CW tones | 2 x 20 W CW tones |

Block Diagram



Logic Table

| Combining Mode Operation (Ground Based) | | | |
|---|----------------------|--------------------|-------------------------------------|
| RF Ports Input Voltage | | | |
| 617.25 to 687.75 MHz | 699.25 to 745.75 MHz | COMMON | DC/AISG Path Selection |
| $7 \leq V \leq 30$ | <7 | <7 | 617.25 to 687.75 MHz to COMMON "ON" |
| <7 | $7 \leq V \leq 30$ | <7 | 699.25 to 745.75 MHz to COMMON "ON" |
| $7 \leq V \leq 30$ | $7 \leq V \leq 30$ | <7 | 617.25 to 687.75 MHz to COMMON "ON" |
| | | | |
| Splitting Mode Operation (Tower Top) | | | |
| RF Ports Impedance DC (Load sensing) | | | |
| 617.25 to 687.75 MHz | 699.25 to 745.75 MHz | COMMON | DC/AISG Path Selection |
| open/load | short | $7 \leq V \leq 30$ | COMMON to 617.25-687.75 "ON" |
| short | open/load | $7 \leq V \leq 30$ | COMMON to 699.25-745.75 "ON" |
| open/load | open/load | $7 \leq V \leq 30$ | ALL ports ON |
| short | short | $7 \leq V \leq 30$ | ALL ports OFF |

Environmental Specifications

| | |
|--------------------------------|--------------------------------------|
| Operating Temperature | -40 °C to +65 °C (-40 °F to +149 °F) |
| Relative Humidity | 5%–100% |
| Corrosion Test Method | IEC 60068-2-11, 30 days |
| Ingress Protection Test Method | IEC 60529:2001, IP67 |

Packaging and Weights

| | |
|-----------------------------------|--------------------|
| Included | Mounting hardware |
| Mounting Hardware Weight | 0.5 kg 1.102 lb |
| Weight, without mounting hardware | 5.3 kg 11.684 lb |

Regulatory Compliance/Certifications

| Agency | Classification |
|---------------|--|
| ISO 9001:2015 | Designed, manufactured and/or distributed under this quality management system |