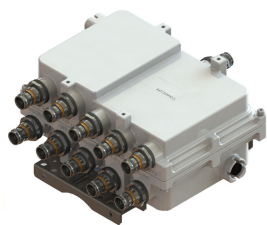


# SPX78192126T-43 | E14F20P03



## Compact Twin Pentaplexer, 700/850/PCS/AWS/WCS-BRS, 4.3-10

- BTS-to-feeder and feeder-to-antenna application
- dc/AISG blocking on all ports
- Compact form factor with reduced size and weight
- New 4.3-10 connectors for improved PIM performance and size reduction
- Available in single (SPX78192126-43) and twin (SPX78192126T-43) configurations

### Product Classification

**Product Type** Pentaplexer

### General Specifications

**Color** Gray

**Common Port Label** Common

**Modularity** 1-Single

**Mounting** Pole | Wall

**Mounting Pipe Hardware** Band clamps (2)

**RF Connector Interface** 4.3-10 Female

**RF Connector Interface Body Style** Medium neck

### Dimensions

**Height** 180 mm | 7.087 in

**Width** 252 mm | 9.921 in

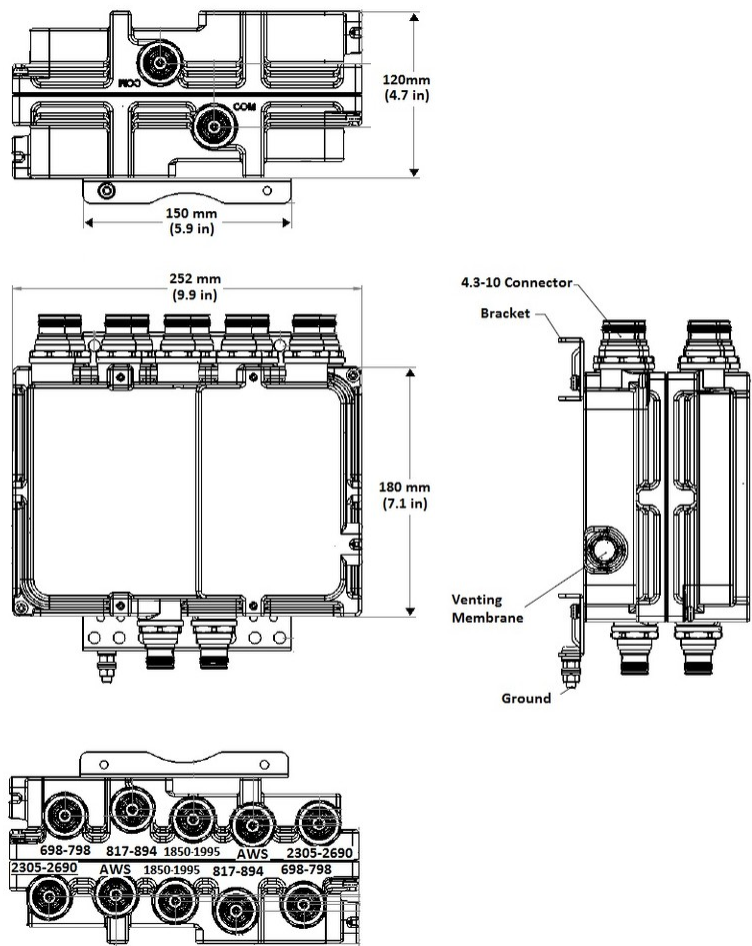
**Depth** 120 mm | 4.724 in

**Ground Screw Diameter** 6 mm | 0.236 in

**Mounting Pipe Diameter Range** 40–160 mm

### Outline Drawing

# SPX78192126T-43 | E14F20P03



## Electrical Specifications

|                         |                                                                                                                             |
|-------------------------|-----------------------------------------------------------------------------------------------------------------------------|
| Impedance               | 50 ohm                                                                                                                      |
| License Band, Band Pass | APT 700   AWS 1700   AWS 2000   CEL 850   IMT 2600   LMR 750   LMR 800   PCS 1900   TDD 2600   USA 700   USA 750   WCS 2300 |

## Electrical Specifications, dc Power/Alarm

|                                  |                         |
|----------------------------------|-------------------------|
| dc/AISG Pass-through Method      | No dc/AISG pass-through |
| Lightning Surge Current          | 5 kA                    |
| Lightning Surge Current Waveform | 8/20 waveform           |

## Electrical Specifications

|            |       |       |       |       |       |
|------------|-------|-------|-------|-------|-------|
| Sub-module | 1   2 | 1   2 | 1   2 | 1   2 | 1   2 |
|------------|-------|-------|-------|-------|-------|

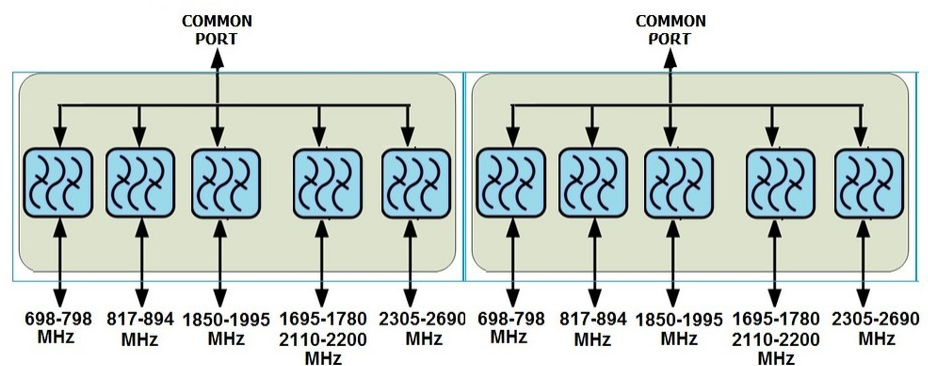
# SPX78192126T-43 | E14F20P03

|                  |                                                                |                                          |                     |                     |                                                                   |
|------------------|----------------------------------------------------------------|------------------------------------------|---------------------|---------------------|-------------------------------------------------------------------|
| Branch           | 1                                                              | 2                                        | 3                   | 4                   | 5                                                                 |
| Port Designation | 698–798                                                        | 817–894                                  | AWS                 | 1850–1995           | WCS+BRS                                                           |
| License Band     | LMR 750, Band Pass<br>USA 700, Band Pass<br>USA 750, Band Pass | CEL 850, Band Pass<br>LMR 800, Band Pass | AWS 1700, Band Pass | PCS 1900, Band Pass | WCS 2300, Band Pass<br>TDD 2600, Band Pass<br>IMT 2600, Band Pass |

## Electrical Specifications, Band Pass

|                                |                   |                   |                                              |                   |                   |
|--------------------------------|-------------------|-------------------|----------------------------------------------|-------------------|-------------------|
| Frequency Range, MHz           | 698–798           | 817–894           | 1695–1780<br>2110–2200                       | 1850–1995         | 2305–2690         |
| Insertion Loss, typical, dB    | 0.2               | 0.3               | 0.3                                          | 0.3               | 0.2               |
| Total Group Delay, maximum, ns | 40                | 55                | 25                                           | 55                | 25                |
| Return Loss, minimum, dB       | 20                | 20                | 20                                           | 20                | 20                |
| Return Loss, typical, dB       | 22                | 22                | 22                                           | 22                | 22                |
| Isolation, typical, dB         | 50                | 50                | 50                                           | 50                | 50                |
| Input Power, RMS, maximum, W   | 100               | 100               | 100                                          | 100               | 100               |
| Input Power, PEP, maximum, W   | 1000              | 1000              | 1000                                         | 1000              | 1000              |
| 3rd Order PIM, typical, dBc    | -161              | -161              | -161                                         | -161              | -161              |
| 3rd Order PIM Test Method      | 2 x 20 W CW tones | 2 x 20 W CW tones | 1 x 20 W AWS CW tone<br>1 x 20 W PCS CW tone | 2 x 20 W CW tones | 2 x 20 W CW tones |

## Block Diagram



## Environmental Specifications

|                                |                                      |
|--------------------------------|--------------------------------------|
| Operating Temperature          | -40 °C to +65 °C (-40 °F to +149 °F) |
| Corrosion Test Method          | IEC 60068-2-11, 30 days              |
| Ingress Protection Test Method | IEC 60529:2001, IP67                 |

Packaging and Weights

|                          |                   |
|--------------------------|-------------------|
| Included                 | Mounting hardware |
| Mounting Hardware Weight | 0.4 kg   0.882 lb |
| Weight, net              | 7 kg   15.432 lb  |

Regulatory Compliance/Certifications

| Agency     | Classification                                                                                                           |
|------------|--------------------------------------------------------------------------------------------------------------------------|
| CHINA-ROHS | Below maximum concentration value                                                                                        |
| REACH-SVHC | Compliant as per SVHC revision on <a href="http://www.andrew.com/ProductCompliance">www.andrew.com/ProductCompliance</a> |
| ROHS       | Compliant                                                                                                                |
| UK-ROHS    | Compliant                                                                                                                |

