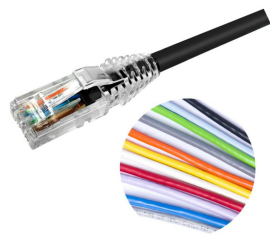


NPC06UZDB

Base Product



NETCONNECT® Cat 6 U/UTP RJ45 Patch Cord, LSZH

- High-performance patch cords exceeding industry standards supporting NETCONNECT channel specifications
- Standardized transparent, slim-line boots provides consistent patch cord appearance and supports highest density applications
- Colored clips are available to fit the transparent boot, eliminating the need of multiple colors for matching every jacket color
- Colored pull latch tabs are available for easier plug release handling from the modular jack

Product Classification

| | |
|-----------------------|---|
| Regional Availability | Asia EMEA Latin America |
| Portfolio | NETCONNECT® |
| Product Type | Twisted pair patch cord |
| Product Series | NPC |
| Ordering Note | Cords < 1 m are valid elements for use in a channel or as an equipment interconnect but due to their limited length are not guaranteed to meet component compliance requirements that were developed to assess the quality of longer cords Cords > 1 m are authorized for use in channels and are an effective standalone method used to connect active devices |

General Specifications

| | |
|--------------------------------|--|
| Product Number | CC6ZH |
| ANSI/TIA Category | 6 |
| Cable Type | U/UTP (unshielded) |
| Conductor Type | Stranded |
| Interface, Connector A | RJ45 plug |
| Interface Feature, connector A | Standard |
| Interface, Connector B | RJ45 plug |
| Interface Feature, connector B | Standard |
| Jacket Color | Black Blue Green Orange Red Slate White Yellow |
| Pairs, quantity | 4 |
| Separator Type | Bisector |
| Transmission Standards | ANSI/TIA-568.2-D IEEE 802.3bt Type 4 ISO/IEC 11801 Class E |
| Wiring | T568B |

NPC06UZDB

Dimensions

| | |
|--------------------------------------|--------------------|
| Cable Assembly Length Range (m) | 1 – 30 |
| Cable Assembly Length Range (ft) | 1 – 100 |
| Cable Assembly Length Range (cm) | 15 – 999 |
| Cable Assembly Length Range (in) | 6 – 999 |
| Diameter Over Jacket | 5.97 mm 0.235 in |
| Compatible Conductor Gauge, stranded | 24 AWG |

Electrical Specifications

| | |
|---------------------------------------|---|
| Nominal Velocity of Propagation (NVP) | 69 % |
| Remote Powering | Fully complies with the recommendations set forth by IEEE 802.3bt (Type 4) for the safe delivery of power over LAN cable when installed according to ISO/IEC 14763-2, CENELEC EN 50174-1, CENELEC EN 50174-2 or TIA TSB-184-A |

Ordering Tree

NPC-

10

OR

12

0

5

0

11

M

| | | |
|--------------|----|--------|
| Jacket Color | | |
| 10 | BK | Black |
| | BL | Blue |
| | GN | Green |
| | GY | Gray |
| | OR | Orange |
| | PK | Pink |
| | RD | Red |
| | WT | White |
| | YL | Yellow |

| | | |
|-----|---|------------|
| UOM | | |
| 11 | F | Foot |
| | M | Meter |
| | N | Inch |
| | C | Centimeter |

| | | |
|--------|-----|--|
| Length | | |
| 12 | XXX | |

- Notes
- Cords > 1m are authorized for use in channels and are an effective standalone method used to connect active devices
 - Cords < 1m are also valid elements for use in a channel or as an equipment interconnect but due to their limited length are not guaranteed to meet component compliance requirements that were developed to assess the quality of longer cords

Material Specifications

| | |
|--------------------|-------------------|
| Conductor Material | Tin plated copper |
|--------------------|-------------------|

Mechanical Specifications

| | |
|------------------------------|-----------|
| Plug Insertion Life, minimum | 750 times |
|------------------------------|-----------|

Environmental Specifications

NPC06UZDB

| | |
|--|-------------------------------------|
| Operating Temperature | -20 °C to +60 °C (-4 °F to +140 °F) |
| Relative Humidity | Up to 93%, non-condensing |
| EN50575 CPR Cable EuroClass Fire Performance | Dca |
| EN50575 CPR Cable EuroClass Smoke Rating | s2 |
| EN50575 CPR Cable EuroClass Droplets Rating | d2 |
| EN50575 CPR Cable EuroClass Acidity Rating | a1 |
| Environmental Space | Low Smoke Zero Halogen (LSZH) |
| Flame Test Method | IEC 60332-3 |
| Safety Standard | C-Tick UL 1863 |
| Smoke Test Method | IEC 61034-2 |

Packaging and Weights

| | |
|--------------------|---|
| Packaging quantity | 1 |
|--------------------|---|

Regulatory Compliance/Certifications

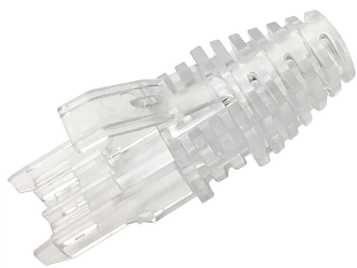
| Agency | Classification |
|---------------|--|
| CHINA-ROHS | Below maximum concentration value |
| ISO 9001:2015 | Designed, manufactured and/or distributed under this quality management system |
| RCM | Compliant to electrical safety & telecommunications requirements |
| REACH-SVHC | Compliant as per SVHC revision on www.commscope.com/ProductCompliance |
| ROHS | Compliant |
| UK-ROHS | Compliant |



Included Products

| | |
|--------------------------------|---|
| 2843020-3 MP-6AU-Boot-59-1 | – Integrated Boot and Pair Manager for MP-6AU, size 59, transparent |
| 6-2843007-1 MP-6AU-Plug-A-1 | – Modular Plug, Category 6A/6, Unshielded, Cond Insulation OD - 0.99mm, 100 pcs |

2843020-3 | MP-6AU-Boot-59-1



Integrated Boot and Pair Manager for MP-6AU, size 59, transparent

Product Classification

| | |
|-----------------------|---|
| Regional Availability | Asia Australia/New Zealand EMEA Latin America North America |
| Portfolio | CommScope® |
| Product Type | Modular plug boot |

General Specifications

| | |
|----------------------|---|
| Boot Feature | Color-clip compatible Pull-tab compatible Slimline Snagless |
| Color | Clear |
| Compatible Plug Type | Cat 6 Cat 6A |

Dimensions

| | |
|------------------------------------|-------------------|
| Compatible Cable Diameter, maximum | 6.2 mm 0.244 in |
| Compatible Cable Diameter, minimum | 5.6 mm 0.22 in |

Packaging and Weights

| | |
|--------------------|---------------|
| Included | Strain relief |
| Packaging quantity | 100 |
| Packaging Type | Bag Box |

Regulatory Compliance/Certifications

| Agency | Classification |
|------------|---|
| CHINA-ROHS | Below maximum concentration value |
| REACH-SVHC | Compliant as per SVHC revision on www.commscope.com/ProductCompliance |
| ROHS | Compliant |
| UK-ROHS | Compliant |



6-2843007-1 | MP-6AU-Plug-A-1



Modular Plug, Category 6A/6, Unshielded, Cond Insulation OD - 0.99mm, 100 pcs

Product Classification

| | |
|-----------------------|---|
| Regional Availability | Asia Australia/New Zealand EMEA Latin America North America |
| Portfolio | CommScope® |
| Product Type | Modular plug |

General Specifications

| | |
|---------------------------|-------------------|
| ANSI/TIA Category | 6 6A |
| Cable Type | Round, unshielded |
| Conductor Type | Solid Stranded |
| Interface | RJ45 |
| Positions/Loaded Contacts | 8/8 |
| Termination Type | IDC |

Dimensions

| | |
|--|--------------------|
| Compatible Insulated Conductor Diameter, maximum | 1.09 mm 0.043 in |
| Compatible Insulated Conductor Diameter, minimum | 0.89 mm 0.035 in |
| Contact Plating Thickness | 1.27 µm |
| Compatible Conductor Gauge, solid | 26–23 AWG |
| Compatible Conductor Gauge, stranded | 26–23 AWG |

Electrical Specifications

| | |
|--------------------------------|----------|
| Current Rating, maximum | 0.75 A |
| Insulation Resistance, minimum | 500 mOhm |
| Safety Voltage Rating | 150 Vac |

Material Specifications

| | |
|--------------------------|-----------------|
| Contact Base Material | Phosphor Bronze |
| Contact Plating Material | Gold |

6-2843007-1 | MP-6AU-Plug-A-1

| | |
|---------------|----------------------------|
| Material Type | Glass filled polycarbonate |
|---------------|----------------------------|

Mechanical Specifications

| | |
|------------------------------|-----------|
| Plug Insertion Life, minimum | 750 times |
|------------------------------|-----------|

Environmental Specifications

| | |
|-----------------------|--------------------------------------|
| Operating Temperature | -10 °C to +60 °C (+14 °F to +140 °F) |
|-----------------------|--------------------------------------|

| | |
|-------------------|---------------------------|
| Relative Humidity | Up to 93%, non-condensing |
|-------------------|---------------------------|

| | |
|-----------------|---------|
| Safety Standard | UL 1863 |
|-----------------|---------|

Packaging and Weights

| | |
|--------------------|-----|
| Packaging quantity | 100 |
|--------------------|-----|

| | |
|----------------|--------------------|
| Packaging Type | Bag Box Carton |
|----------------|--------------------|

Regulatory Compliance/Certifications

| Agency | Classification |
|------------|---|
| CHINA-ROHS | Below maximum concentration value |
| REACH-SVHC | Compliant as per SVHC revision on www.commscope.com/ProductCompliance |
| ROHS | Compliant |
| UK-ROHS | Compliant |

